

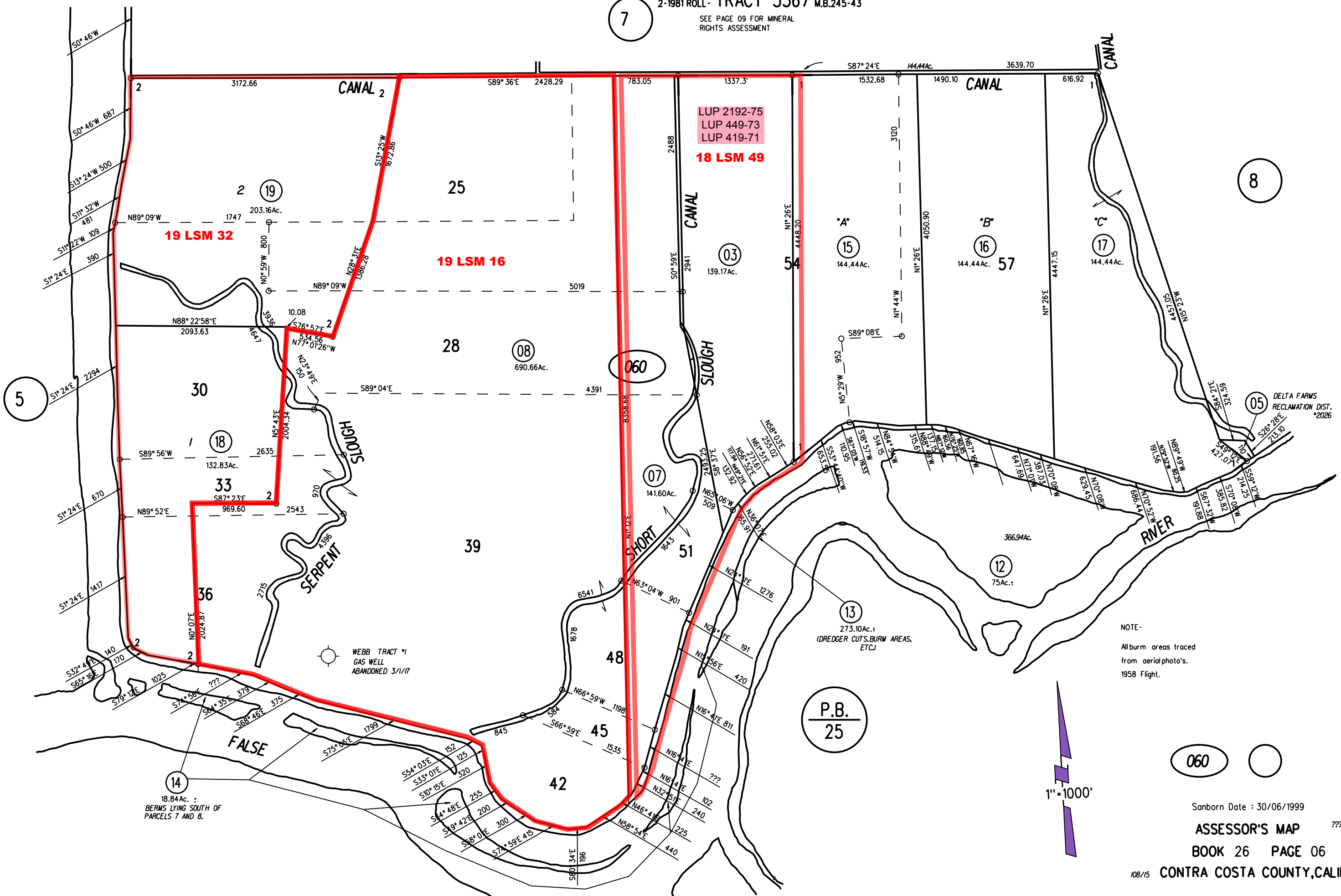
WEBB TRACT

1-1974 30P.M.13 9-27-73
2-1981 ROLL- TRACT 5567 M.B.245-43

SEE PAGE 09 FOR MINERAL RIGHTS ASSESSMENT

7

8



LUP 2192-75
LUP 449-73
LUP 419-71
18 LSM 49

19 LSM 32

19 LSM 16

060

P.B.
25

060

NOTE:
All berm areas traced
from aerial photo's.
1958 flight.

Sanborn Date : 30/06/1999

ASSESSOR'S MAP

BOOK 26 PAGE 06

108/15 CONTRA COSTA COUNTY, CALIF.