

S 1/2 SEC.5 T1N R3E MDBM

- 1- 16 P.M.42 5/25/71
- 2- 25P.M.48 1-5-73
- 3- 57P.M.34&35 9-6-77
- 4- 91P.M.37&38 12-18-80
- 5- 93P.M.3 2-24-81

- 6- 103P.M.44 12-1-82
- 7- 174P.M.50 8-13-98

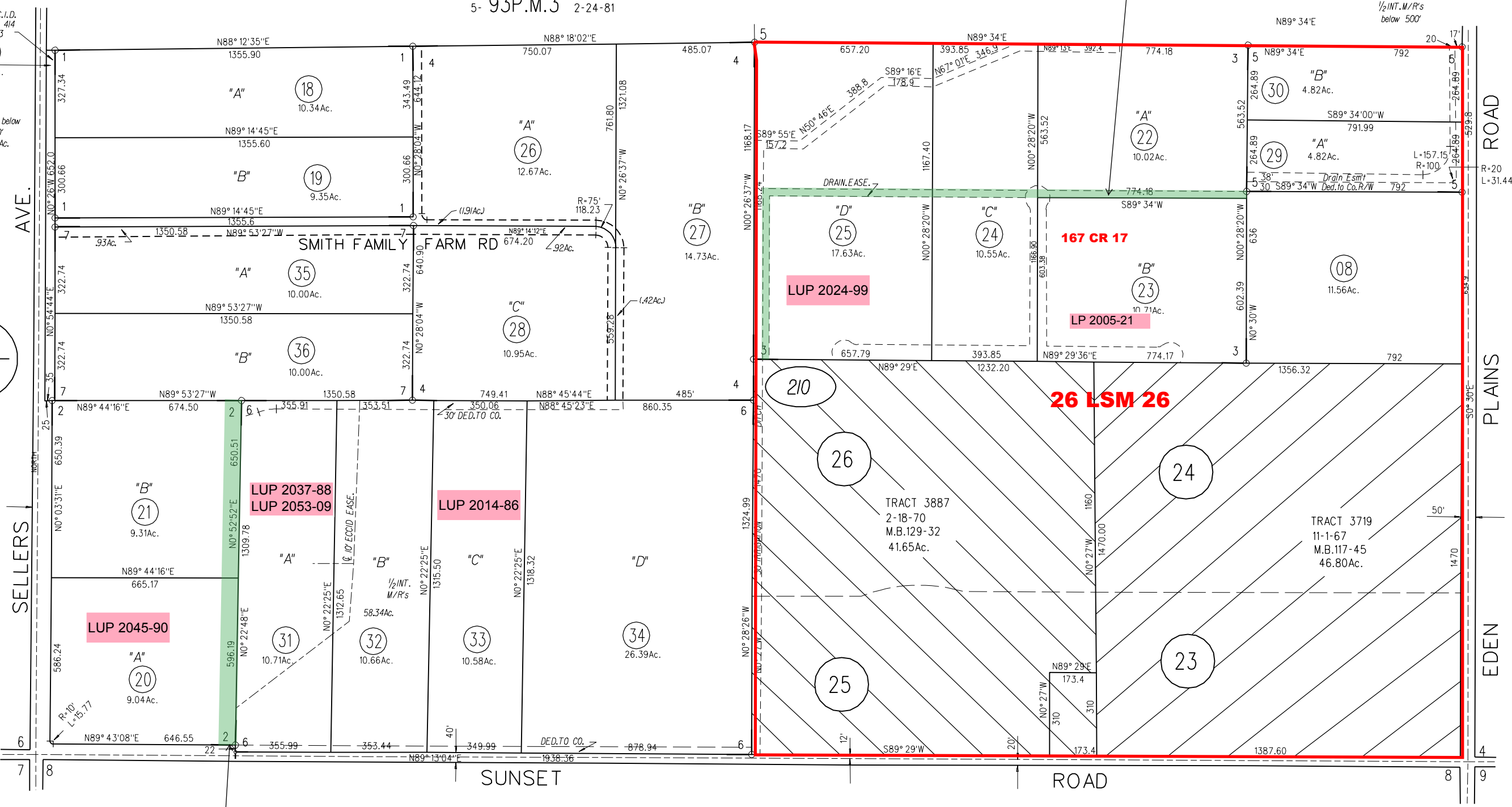
OFF. DED.
8493 OR 832
9-6-77

20

E.C.C.I.D.
428 D 414
1-9-23

1/2 M/R below
500'
18.43Ac.

P.B.
18



Drain. Ease.
6879 OR 728
3-5-73

P.B.
15

1/2 Int M/R
Below 500'
J.L. and M. Cunha
Tract 3719

210



18