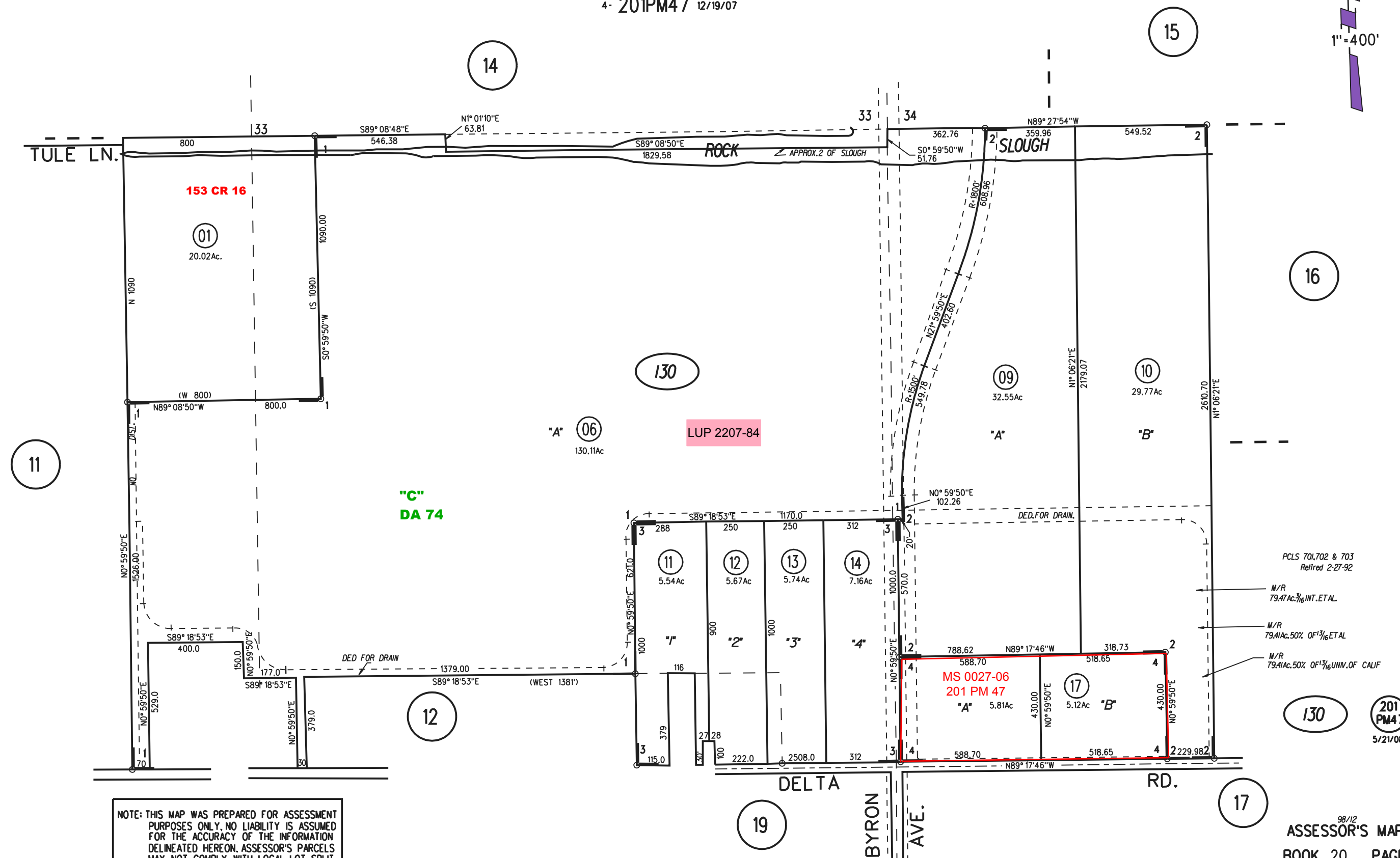
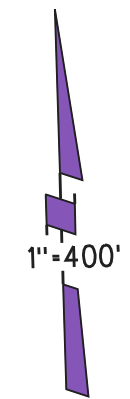


POR S 1/2 SEC 33 & SEC 34 T2N R3E MDBM

- 1- 72PM2 11/15/78
- 2- 108PM27 12/8/83
- 3- 73LSM9 8/18/83
- 4- 201PM47 12/19/07



NOTE: THIS MAP WAS PREPARED FOR ASSESSMENT PURPOSES ONLY. NO LIABILITY IS ASSUMED FOR THE ACCURACY OF THE INFORMATION DELINEATED HEREON. ASSESSOR'S PARCELS MAY NOT COMPLY WITH LOCAL LOT SPLIT OR BUILDING SITE ORDINANCES.

PCLS 701,702 & 703  
Retired 2-27-92

M/R  
79.47Ac. 1/16 INT. ET AL.

M/R  
79.41Ac. 50% OF 1 1/16 ET AL.

M/R  
79.41Ac. 50% OF 1 1/16 UNIV. OF CALIF

130

201  
PM47  
5/21/08