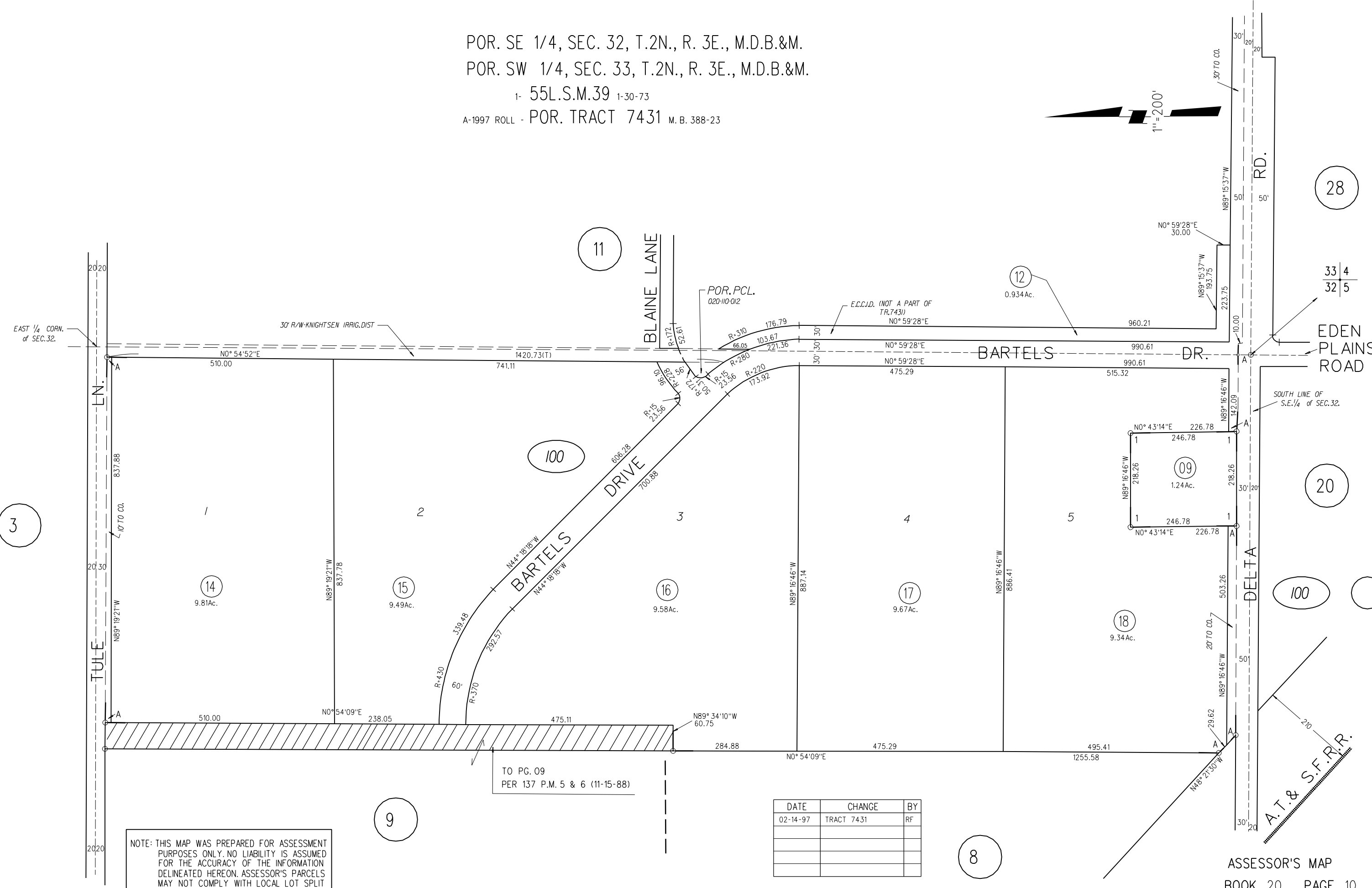


POR. SE 1/4, SEC. 32, T.2N., R. 3E., M.D.B.&M.
 POR. SW 1/4, SEC. 33, T.2N., R. 3E., M.D.B.&M.
 1- 55L.S.M.39 1-30-73
 A-1997 ROLL - POR. TRACT 7431 M.B. 388-23



NOTE: THIS MAP WAS PREPARED FOR ASSESSMENT PURPOSES ONLY. NO LIABILITY IS ASSUMED FOR THE ACCURACY OF THE INFORMATION DELINEATED HEREON. ASSESSOR'S PARCELS MAY NOT COMPLY WITH LOCAL LOT SPLIT OR BUILDING SITE ORDINANCES.

TO PG. 09
 PER 137 P.M. 5 & 6 (11-15-88)

DATE	CHANGE	BY
02-14-97	TRACT 7431	RF