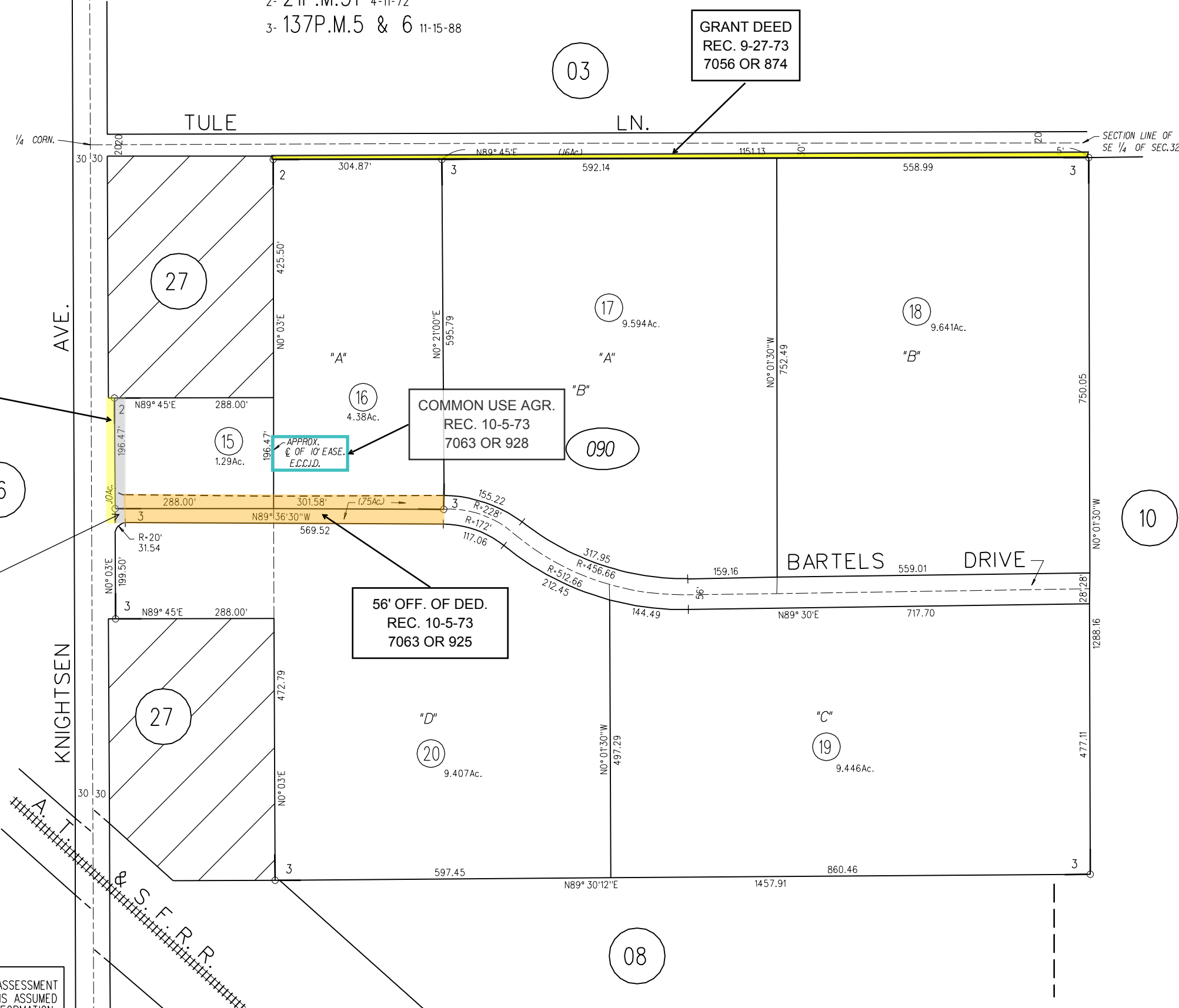


POR. SE 1/4, SEC. 32, T2N R3E M.D.B. & M.

- 1- 27L.S.M.48 5-20-64
- 2- 21P.M.31 4-11-72
- 3- 137P.M.5 & 6 11-15-88

GRANT DEED
REC. 9-27-73
7056 OR 874

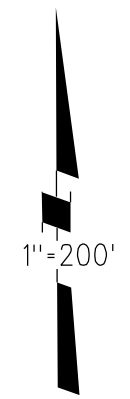


GD
9-27-73
7056 OR 874

COMMON USE AGR.
REC. 10-5-73
7063 OR 928

56' OFF. OF DED.
REC. 10-5-73
7063 OR 925

RELINQ. ABUT. RTS.
9-25-73
7054 OR 764



NOTE: THIS MAP WAS PREPARED FOR ASSESSMENT PURPOSES ONLY. NO LIABILITY IS ASSUMED FOR THE ACCURACY OF THE INFORMATION DELINEATED HEREON. ASSESSOR'S PARCELS MAY NOT COMPLY WITH LOCAL LOT SPLIT OR BUILDING SITE ORDINANCES.

090

2-16-89