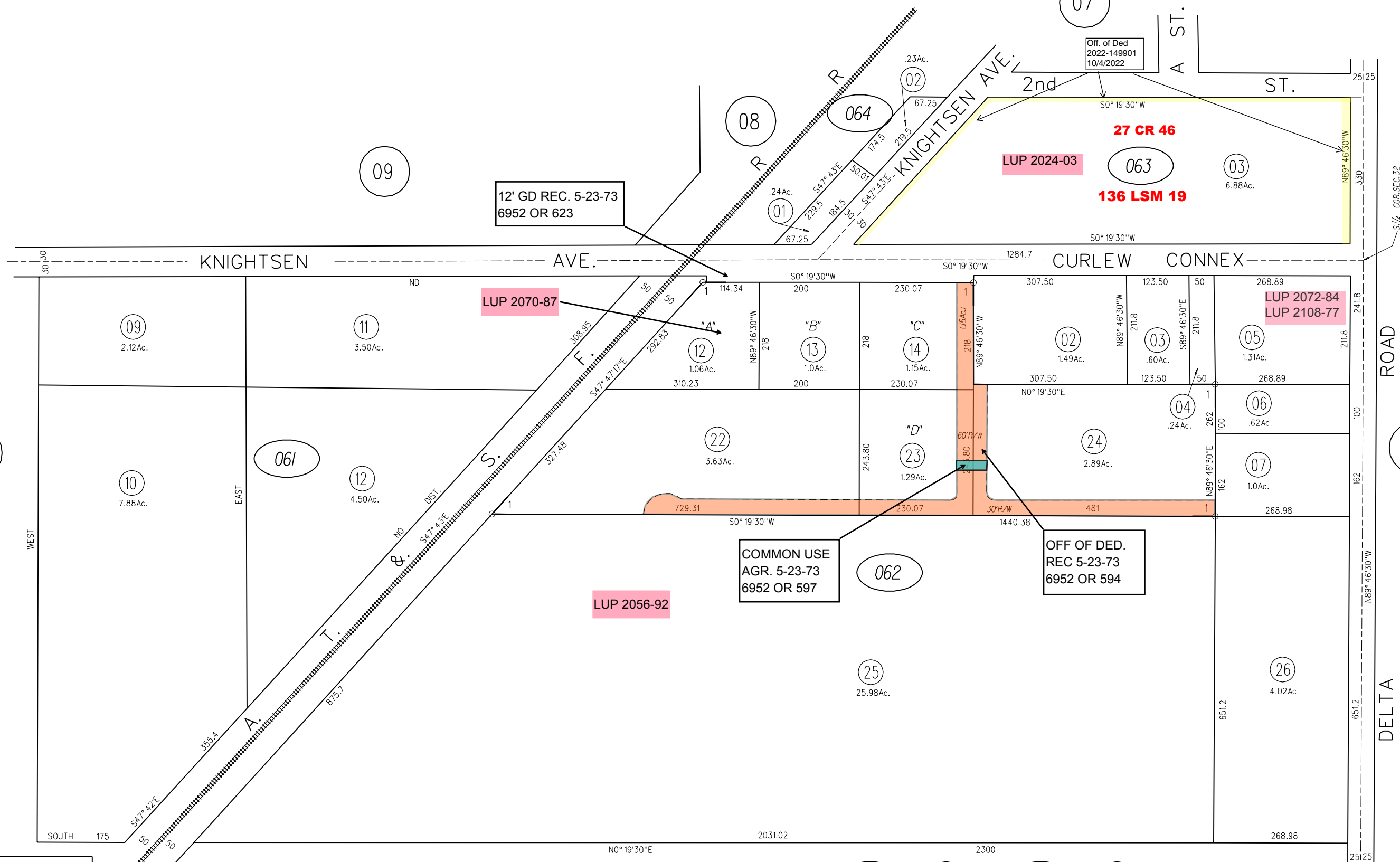
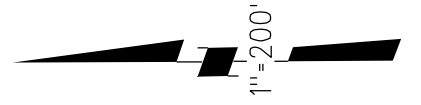


POR S 1/2 SEC.32 T2N R3E MDBM

1-27P.M.29 4-19-73



12' GD REC. 5-23-73
6952 OR 623

Off. of Ded
2022-149901
10/4/2022

LUP 2070-87

LUP 2072-84
LUP 2108-77

COMMON USE
AGR. 5-23-73
6952 OR 597

OFF OF DED.
REC 5-23-73
6952 OR 594

LUP 2056-92

LUP 2024-03

27 CR 46
136 LSM 19

NOTE: THIS MAP WAS PREPARED FOR ASSESSMENT PURPOSES ONLY. NO LIABILITY IS ASSUMED FOR THE ACCURACY OF THE INFORMATION DELINEATED HEREON. ASSESSOR'S PARCELS MAY NOT COMPLY WITH LOCAL LOT SPLIT OR BUILDING SITE ORDINANCES.

- 05
- 061
- 062
- 12
- 26
- 063
- 064
- 07
- 08
- 09
- 10
- 11
- 13
- 14
- 15
- 20
- 22
- 23
- 24
- 25
- 26