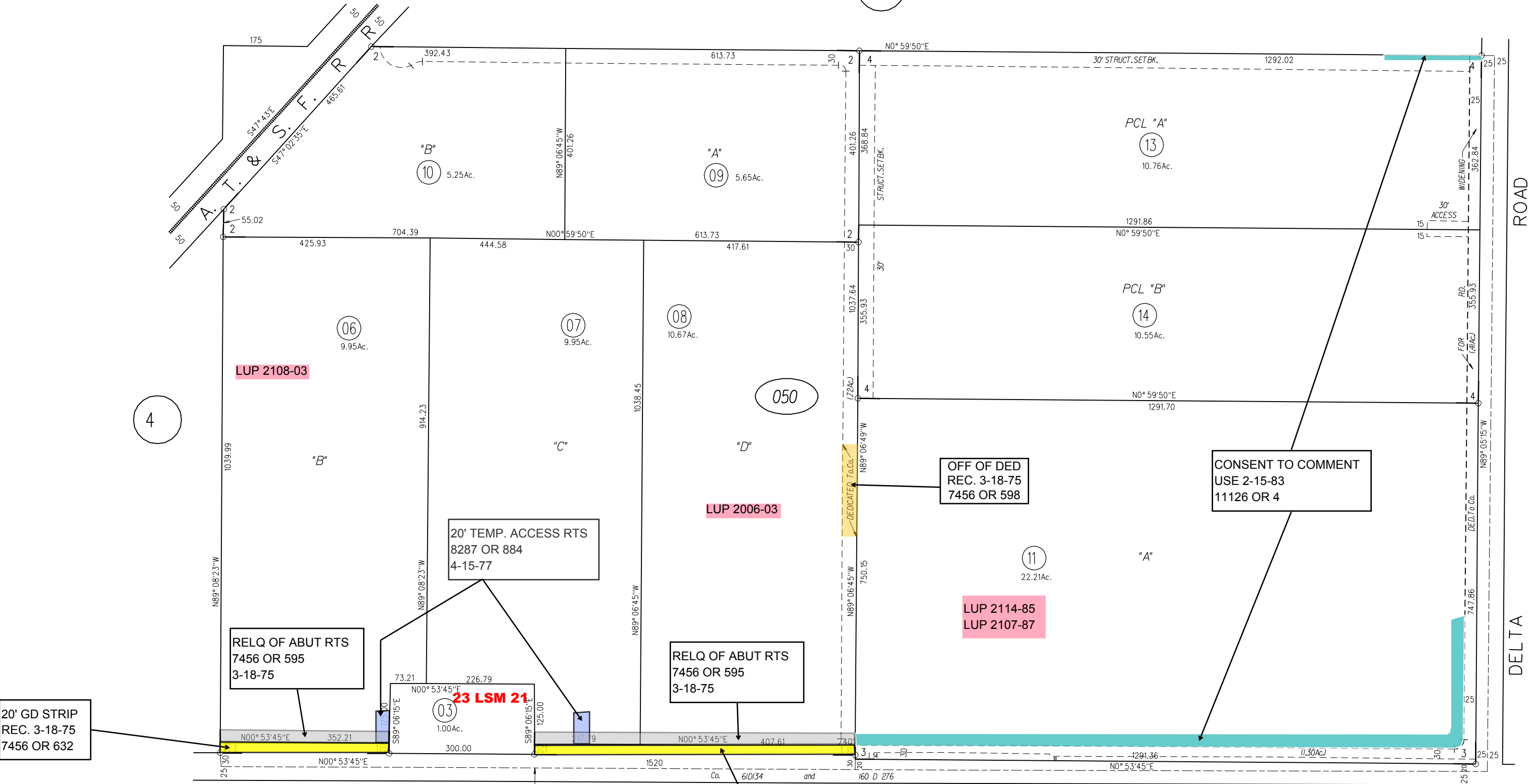


POR S 1/2 SEC. 32 T2N R3E MDBM

- 1- 37 P.M. 10 2/28/75
- 2- 72P.M.22 & 23 11-29-78
- 3- 104P.M.46 2-15-83
- 4- 148PM45 10-17-90

6



ROAD

DELTA ROAD

20

4

20' GD STRIP
REC. 3-18-75
7456 OR 632

RELQ OF ABUT RTS
7456 OR 595
3-18-75

20' TEMP. ACCESS RTS
8287 OR 884
4-15-77

RELQ OF ABUT RTS
7456 OR 595
3-18-75

OFF OF DED
REC. 3-18-75
7456 OR 598

CONSENT TO COMMENT
USE 2-15-83
11126 OR 4

LUP 2114-85
LUP 2107-87

LUP 2108-03

LUP 2006-03

23 LSM 21

P.B.
33

20' GD STRIP
REC. 3-18-75
7456 OR 632

050

NOTE: THIS MAP WAS PREPARED FOR ASSESSMENT PURPOSES ONLY. NO LIABILITY IS ASSUMED FOR THE ACCURACY OF THE INFORMATION DELINEATED HEREON. ASSESSOR'S PARCELS MAY NOT COMPLY WITH LOCAL LOT SPLIT OR BUILDING SITE ORDINANCES.

