

BRENTWOOD IRRIGATED FARMS SUB NO. 7 MB 17-374

A-1991 ROLL- POR TRACT 6848 MB 343-30

B-1994 ROLL- POR TRACT 7816 MB 369-34 (BRENTWOOD COUNTRY CLUB)

C-1997 ROLL- POR TRACT 7872 MB 386-32 (BRENTWOOD COUNTRY CLUB)

D-1995 ROLL- POR TRACT 7870 MB 377-46 (BRENTWOOD COUNTRY CLUB)

1- 114PM38 2/26/85

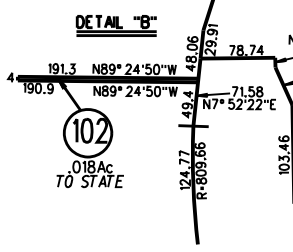
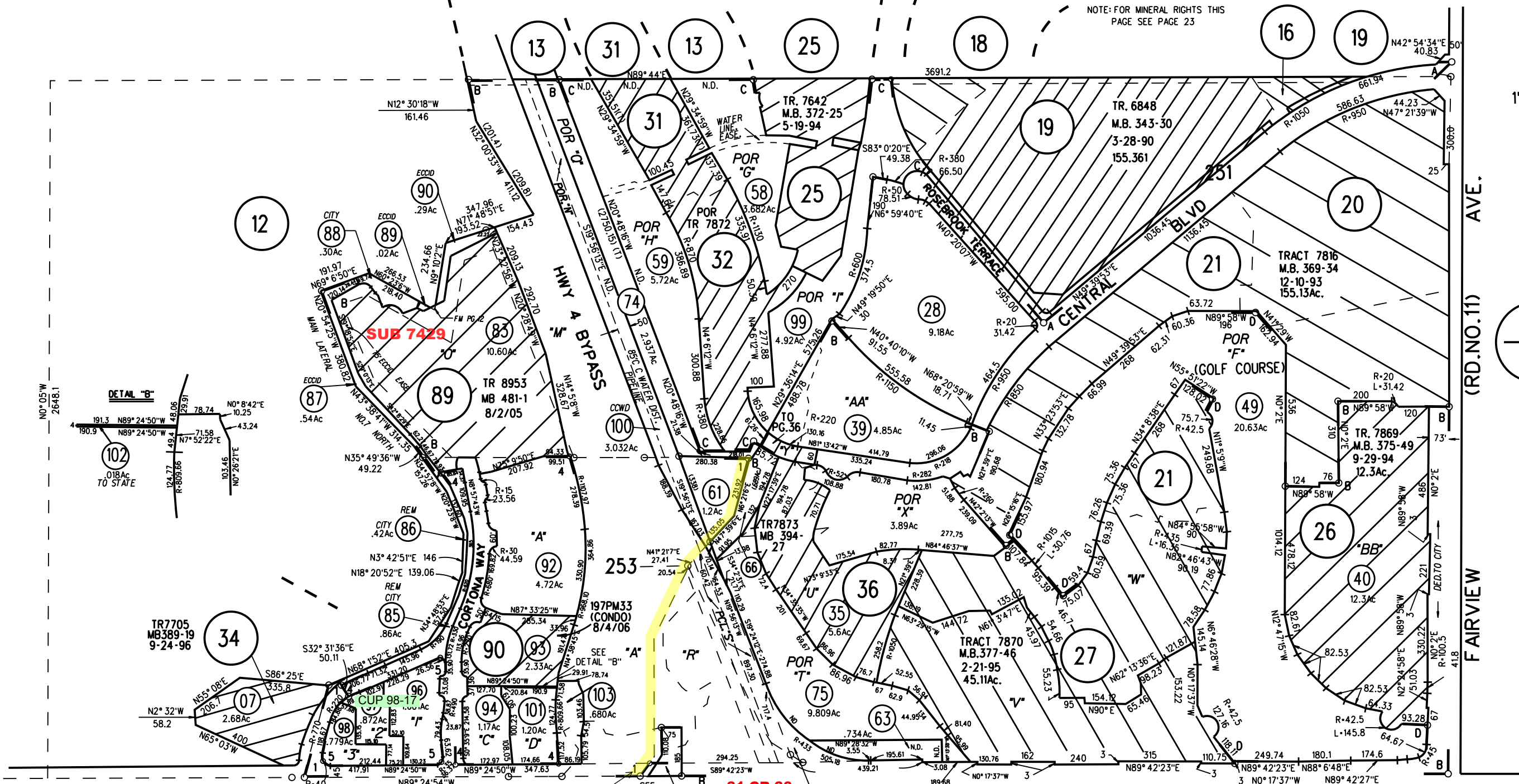
2- POR 142PM44 10/9/89

3- 187PM37 7/25/03

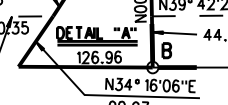
4- 192PM5 1/21/05

5- 200PM41 7/9/07

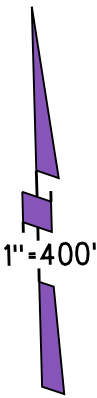
NOTE: FOR MINERAL RIGHTS THIS PAGE SEE PAGE 23



GD OF DEV. RTS 2-26-85 12199 OR 852



NOTE: THIS MAP WAS PREPARED FOR ASSESSMENT PURPOSES ONLY. NO LIABILITY IS ASSUMED FOR THE ACCURACY OF THE INFORMATION DELINEATED HEREON. ASSESSOR'S PARCELS MAY NOT COMPLY WITH LOCAL LOT SPLIT OR BUILDING SITE ORDINANCES.



1"=400'

P.B. 12

P.B. 7

P.B. 10

150

101-103 10/25/16