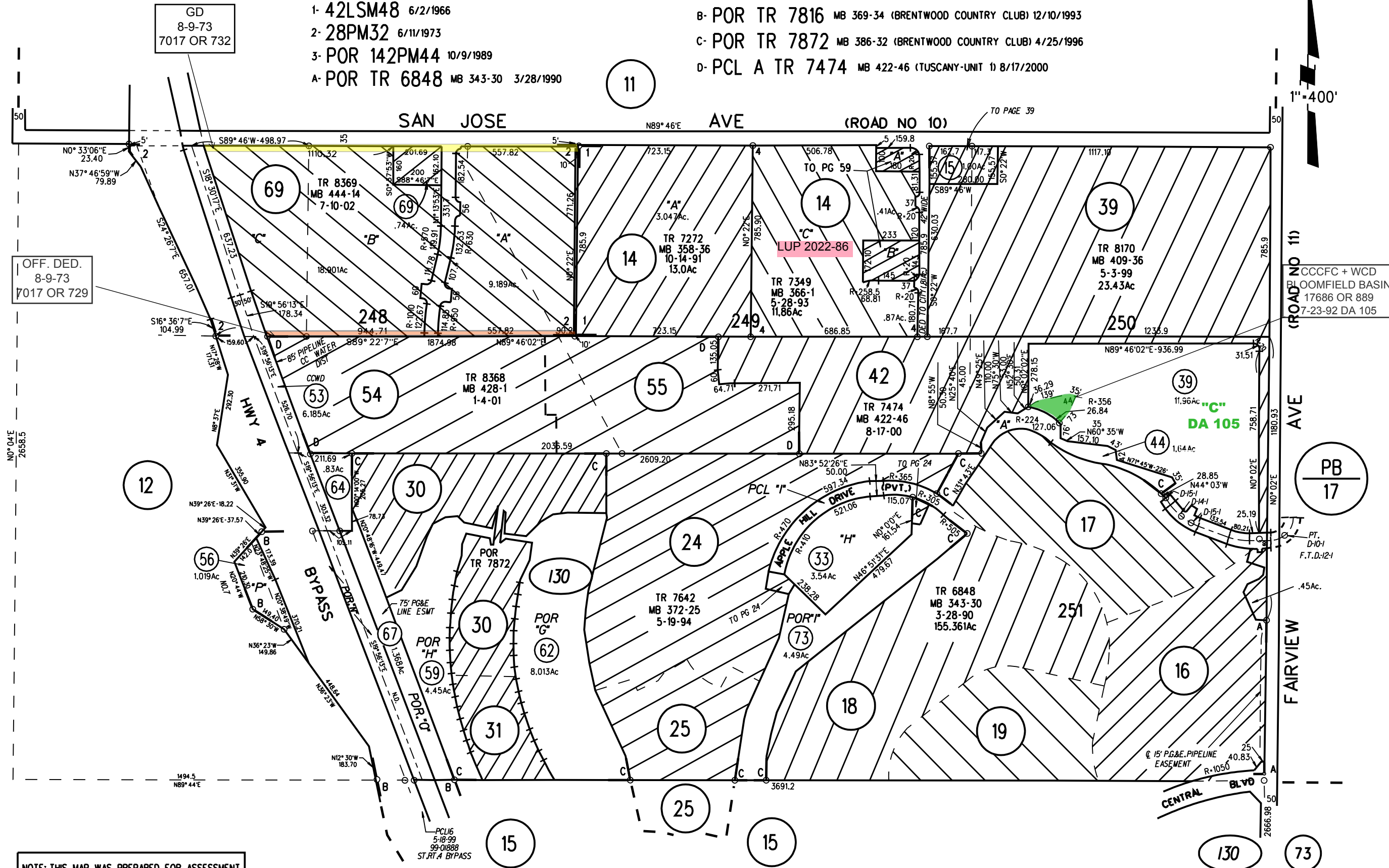


BRENTWOOD IRRIGATED FARMS SUB NO 6 MB 17-373 8/4/1920

- 1- 42LSM48 6/2/1966
- 2- 28PM32 6/11/1973
- 3- POR 142PM44 10/9/1989
- A- POR TR 6848 MB 343-30 3/28/1990

- B- POR TR 7816 MB 369-34 (BRENTWOOD COUNTRY CLUB) 12/10/1993
- C- POR TR 7872 MB 386-32 (BRENTWOOD COUNTRY CLUB) 4/25/1996
- D- PCL A TR 7474 MB 422-46 (TUSCANY-UNIT 1) 8/17/2000



OFF. DED.  
8-9-73  
7017 OR 729

GD  
8-9-73  
7017 OR 732

NOTE: THIS MAP WAS PREPARED FOR ASSESSMENT PURPOSES ONLY. NO LIABILITY IS ASSUMED FOR THE ACCURACY OF THE INFORMATION DELINEATED HEREON. ASSESSOR'S PARCELS MAY NOT COMPLY WITH LOCAL LOT SPLIT OR BUILDING SITE ORDINANCES.

1"=400'

CCCCFC + WCD  
BLOOMFIELD BASIN  
17686 OR 889  
7-23-92 DA 105

PB  
17

130 73  
04/12/12