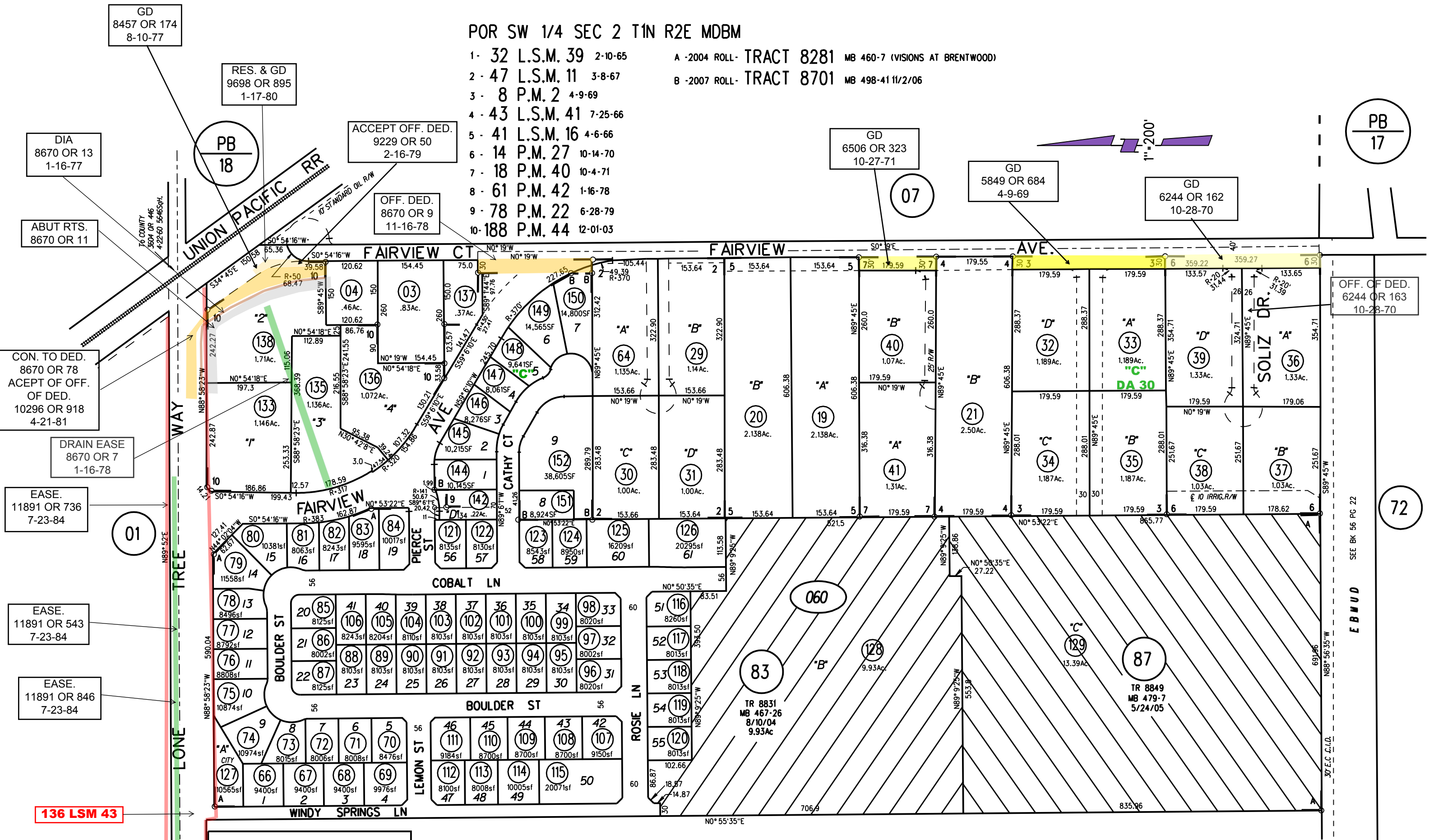


POR SW 1/4 SEC 2 T1N R2E MDBM

- 1 - 32 L.S.M. 39 2-10-65
- 2 - 47 L.S.M. 11 3-8-67
- 3 - 8 P.M. 2 4-9-69
- 4 - 43 L.S.M. 41 7-25-66
- 5 - 41 L.S.M. 16 4-6-66
- 6 - 14 P.M. 27 10-14-70
- 7 - 18 P.M. 40 10-4-71
- 8 - 61 P.M. 42 1-16-78
- 9 - 78 P.M. 22 6-28-79
- 10 - 188 P.M. 44 12-01-03

A - 2004 ROLL - TRACT 8281 MB 460-7 (VISIONS AT BRENTWOOD)  
 B - 2007 ROLL - TRACT 8701 MB 498-41 11/2/06



GD 8457 OR 174 8-10-77

RES. & GD 9698 OR 895 1-17-80

DIA 8670 OR 13 1-16-77

ABUT RTS. 8670 OR 11

CON. TO DED. 8670 OR 78  
 ACCEPT OF OFF. OF DED. 10296 OR 918 4-21-81

DRAIN EASE 8670 OR 7 1-16-78

EASE. 11891 OR 736 7-23-84

EASE. 11891 OR 543 7-23-84

EASE. 11891 OR 846 7-23-84

UNION PACIFIC RR

107 ST. STANDARD OIL R/W

ACCEPT OFF. DED. 9229 OR 50 2-16-79

OFF. DED. 8670 OR 9 11-16-78

GD 6506 OR 323 10-27-71

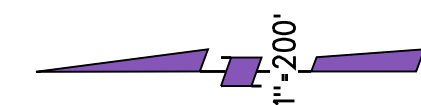
GD 5849 OR 684 4-9-69

GD 6244 OR 162 10-28-70

OFF. OF DED. 6244 OR 163 10-28-70

136 LSM 43

NOTE: THIS MAP WAS PREPARED FOR ASSESSMENT PURPOSES ONLY. NO LIABILITY IS ASSUMED FOR THE ACCURACY OF THE INFORMATION DELINEATED HEREON. ASSESSOR'S PARCELS MAY NOT COMPLY WITH LOCAL LOT SPLIT OR BUILDING SITE ORDINANCES.



PB 17

72

SEE BK 56 PG 22

EBMUD

05

060

TR 8701 4/2/07