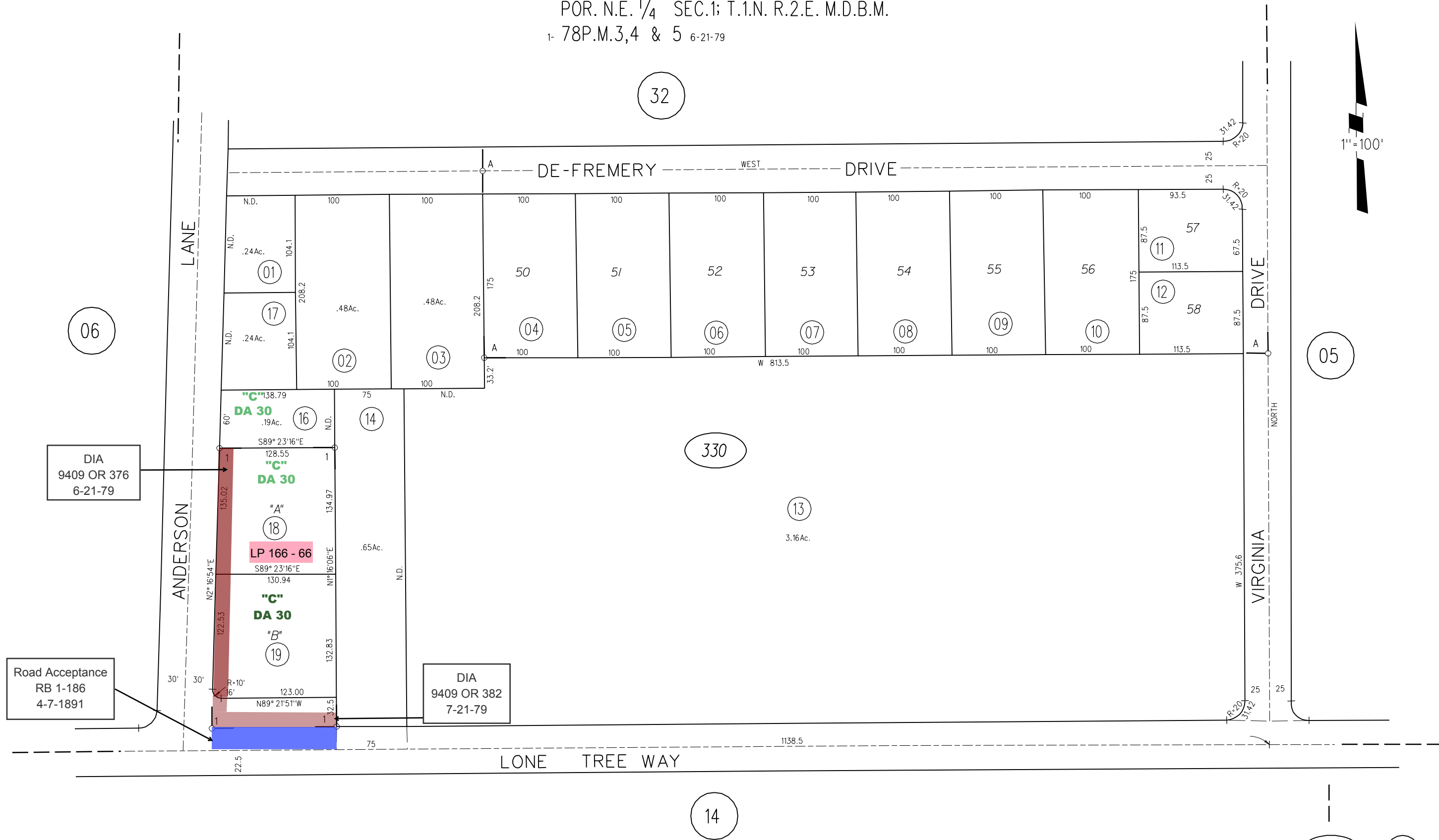


A- LONE TREE VILLA M.B. 35-30
POR. N.E. 1/4 SEC.1; T.1.N. R.2.E. M.D.B.M.
1- 78P.M.3,4 & 5 6-21-79



DIA
9409 OR 376
6-21-79

Road Acceptance
RB 1-186
4-7-1891

DIA
9409 OR 382
7-21-79

NOTE: THIS MAP WAS PREPARED FOR ASSESSMENT PURPOSES ONLY. NO LIABILITY IS ASSUMED FOR THE ACCURACY OF THE INFORMATION DELINEATED HEREON. ASSESSOR'S PARCELS MAY NOT COMPLY WITH LOCAL LOT SPLIT OR BUILDING SITE ORDINANCES.

330
FM. 41/26
ASSESSOR'S MAP
BOOK 18 PAGE 33
CONTRA COSTA COUNTY, CALIF.