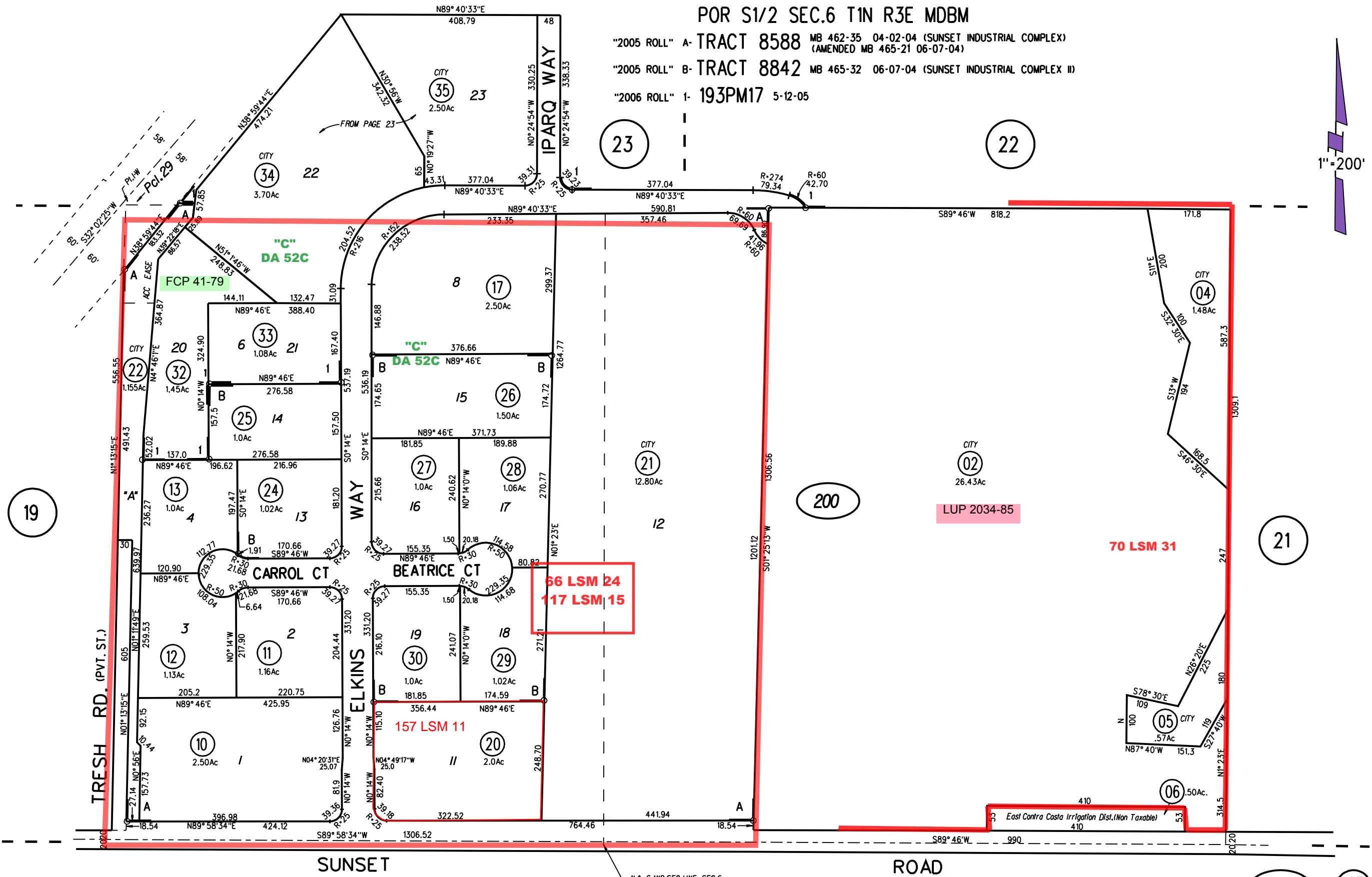


POR S1/2 SEC.6 T1N R3E MDBM

"2005 ROLL" A- TRACT 8588 MB 462-35 04-02-04 (SUNSET INDUSTRIAL COMPLEX)  
"2005 ROLL" B- TRACT 8842 MB 465-32 06-07-04 (SUNSET INDUSTRIAL COMPLEX II)  
"2006 ROLL" 1- 193PM17 5-12-05

1"=200'



NOTE: THIS MAP WAS PREPARED FOR ASSESSMENT PURPOSES ONLY. NO LIABILITY IS ASSUMED FOR THE ACCURACY OF THE INFORMATION DELINEATED HEREON. ASSESSOR'S PARCELS MAY NOT COMPLY WITH LOCAL LOT SPLIT OR BUILDING SITE ORDINANCES.

P.B.  
16

200 193 PM17 5/24/06  
ASSESSOR'S MAP FM 38/28  
BOOK 18 PAGE 20  
CONTRA COSTA COUNTY, CALIF.