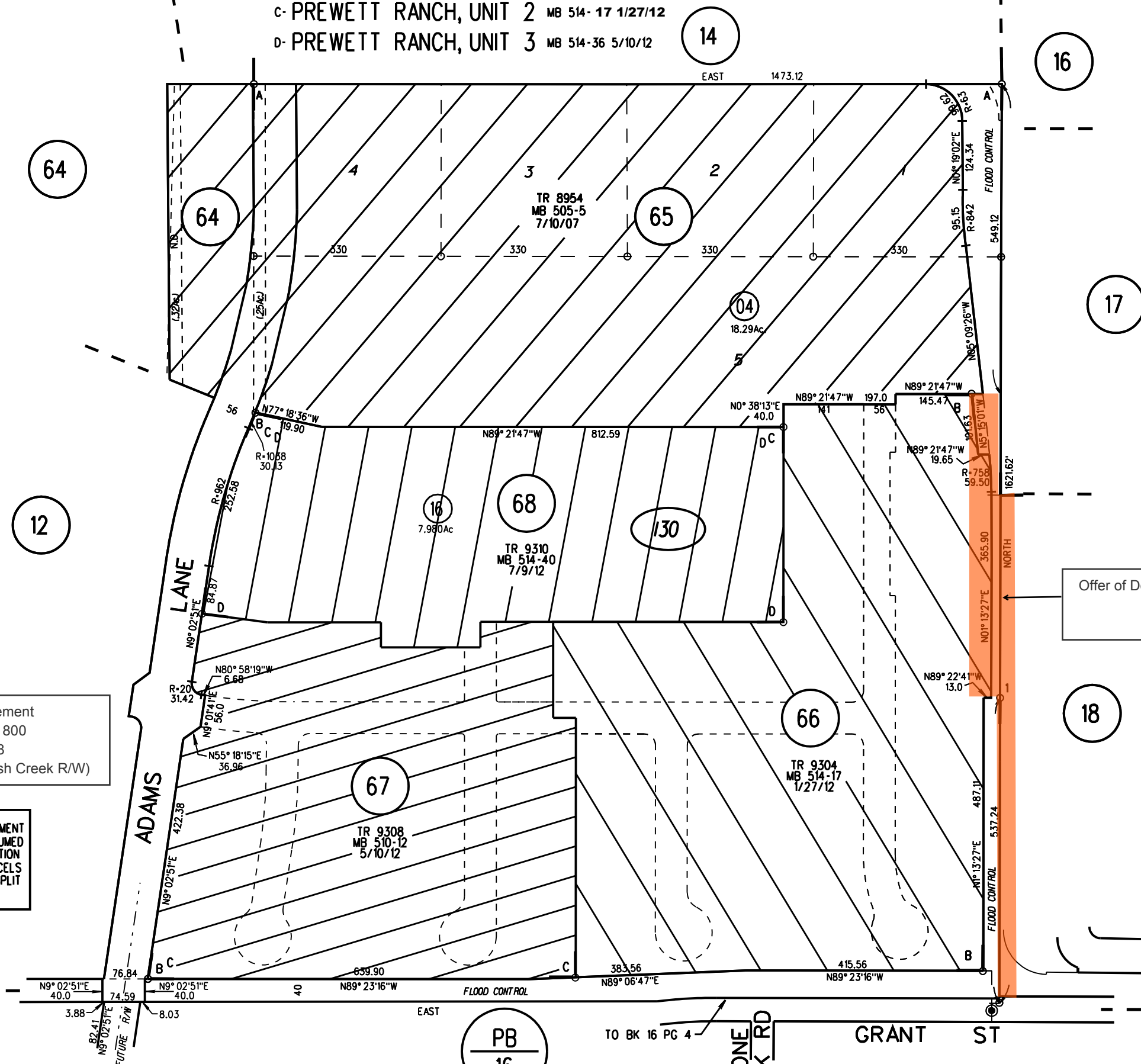


POR SEC 1 T1N R2E MDBM

- A- LONE OAK SUBDIVISION MB 6-139 2/20/1912 ~~16 P.M. 18 4-20-71~~
- B- PCL "F" TR 8954 MB 505-5 7/10/2007 ~~17 P.M. 44 08-06-97~~
- C- PREWETT RANCH, UNIT 2 MB 514-17 1/27/12
- D- PREWETT RANCH, UNIT 3 MB 514-36 5/10/12



PG&E Easement
14242 OR 800
3-30-88
(Doc. Filed with Marsh Creek R/W)

NOTE: THIS MAP WAS PREPARED FOR ASSESSMENT PURPOSES ONLY. NO LIABILITY IS ASSUMED FOR THE ACCURACY OF THE INFORMATION DELINEATED HEREON. ASSESSOR'S PARCELS MAY NOT COMPLY WITH LOCAL LOT SPLIT OR BUILDING SITE ORDINANCES.

Offer of Dedication-Drain. and Road
6375 OR 724
5-6-71

130
9/10/12

PB
16

(5/71) 3-8-65
ASSESSOR'S MAP
BOOK 18 PAGE 13
CONTRA COSTA COUNTY, CALIF.