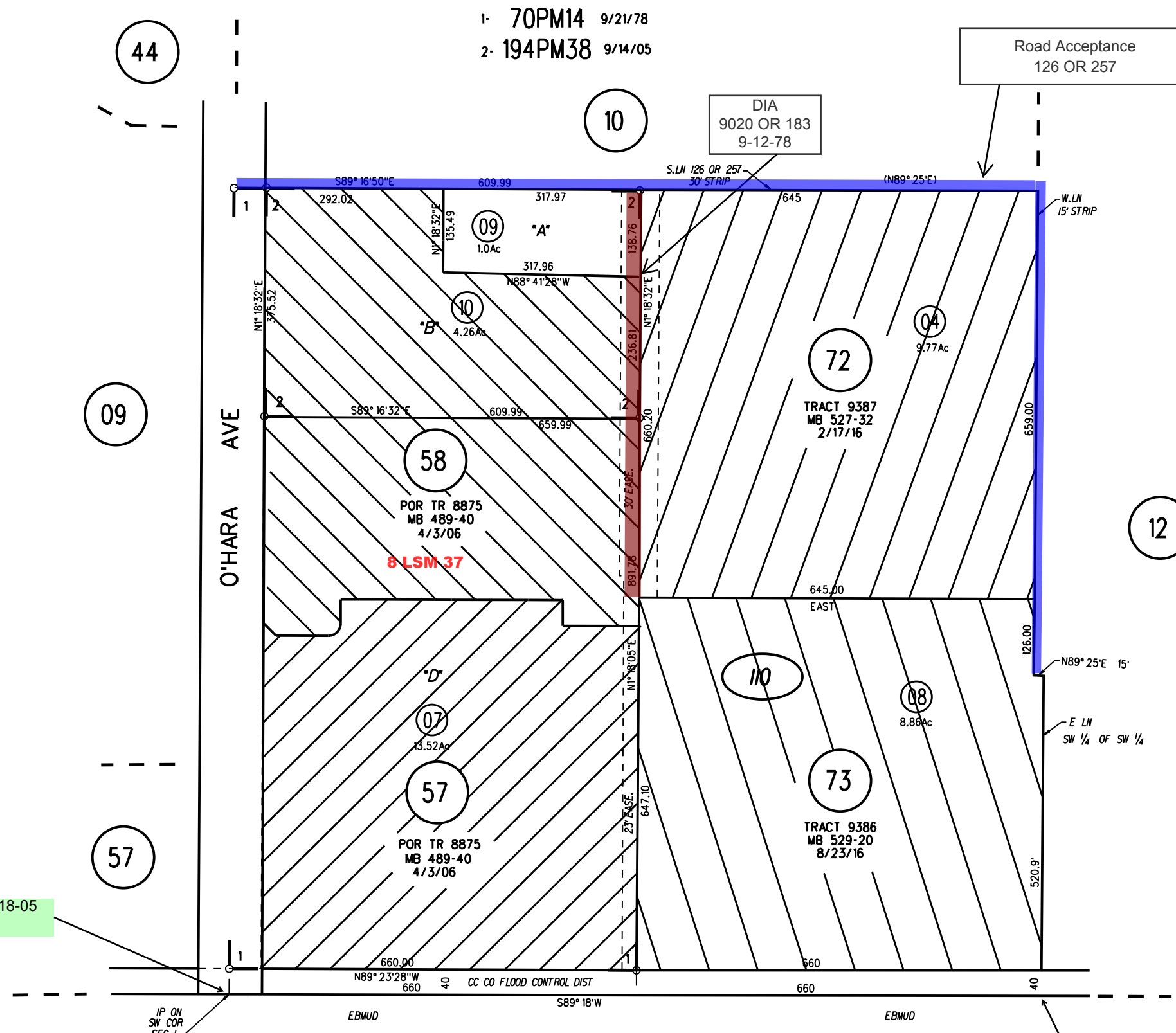


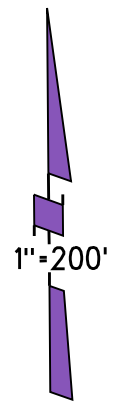
POR S1/2 SEC 1 T1N R2E MDBM

- 1- 70PM14 9/21/78
- 2- 194PM38 9/14/05



Road Acceptance
126 OR 257

DIA
9020 OR 183
9-12-78



FCP 618-05

IP ON SW COR SEC 1

Gas Pipeline
14242 OR 800
3-30-88
(Document is with Marsh Creek R/W)

NOTE: THIS MAP WAS PREPARED FOR ASSESSMENT PURPOSES ONLY. NO LIABILITY IS ASSUMED FOR THE ACCURACY OF THE INFORMATION DELINEATED HEREON. ASSESSOR'S PARCELS MAY NOT COMPLY WITH LOCAL LOT SPLIT OR BUILDING SITE ORDINANCES.

110 TR 9386 9/7/16