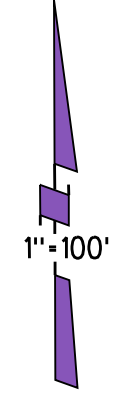
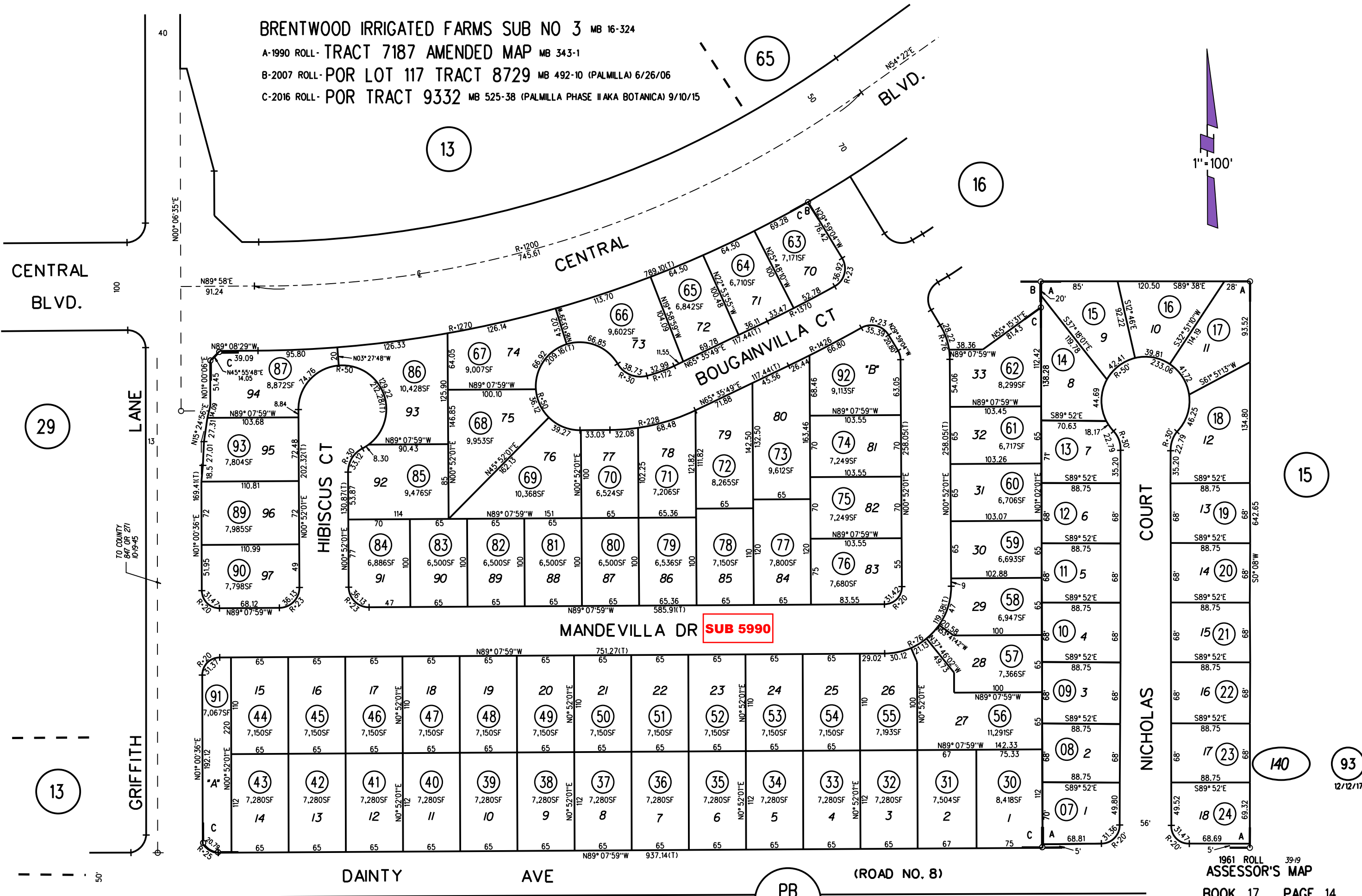


BRENTWOOD IRRIGATED FARMS SUB NO 3 MB 16-324
 A-1990 ROLL - TRACT 7187 AMENDED MAP MB 343-1
 B-2007 ROLL - POR LOT 117 TRACT 8729 MB 492-10 (PALMILLA) 6/26/06
 C-2016 ROLL - POR TRACT 9332 MB 525-38 (PALMILLA PHASE II AKA BOTANICA) 9/10/15



NOTE: THIS MAP WAS PREPARED FOR ASSESSMENT PURPOSES ONLY. NO LIABILITY IS ASSUMED FOR THE ACCURACY OF THE INFORMATION DELINEATED HEREON. ASSESSOR'S PARCELS MAY NOT COMPLY WITH LOCAL LOT SPLIT OR BUILDING SITE ORDINANCES.



PB
12