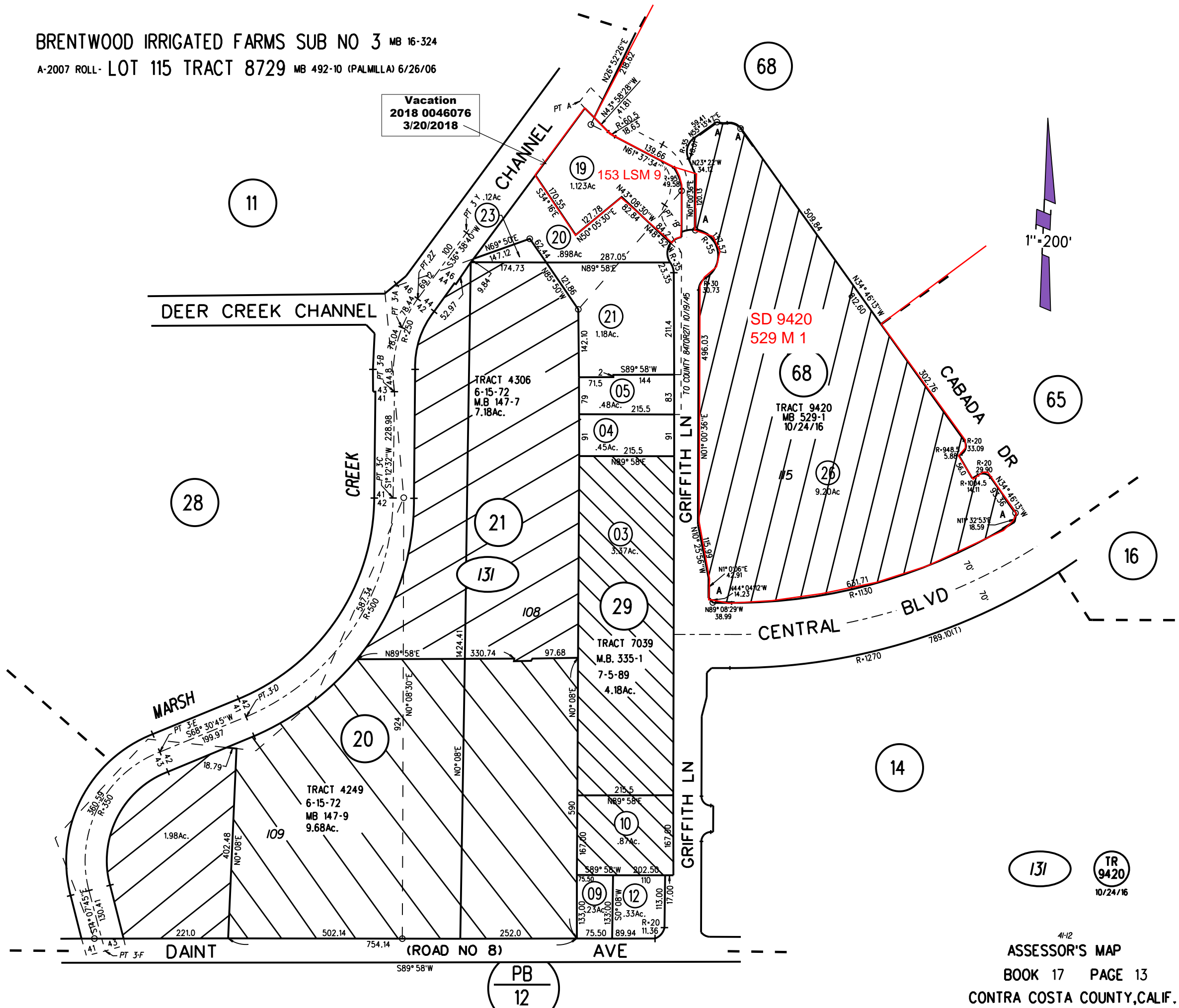


BRENTWOOD IRRIGATED FARMS SUB NO 3 MB 16-324

A-2007 ROLL- LOT 115 TRACT 8729 MB 492-10 (PALMILLA) 6/26/06

Vacation
2018 0046076
3/20/2018



NOTE: THIS MAP WAS PREPARED FOR ASSESSMENT PURPOSES ONLY. NO LIABILITY IS ASSUMED FOR THE ACCURACY OF THE INFORMATION DELINEATED HEREON. ASSESSOR'S PARCELS MAY NOT COMPLY WITH LOCAL LOT SPLIT OR BUILDING SITE ORDINANCES.

PB
12

131 TR 9420 10/24/16
4-12
ASSESSOR'S MAP
BOOK 17 PAGE 13
CONTRA COSTA COUNTY, CALIF.