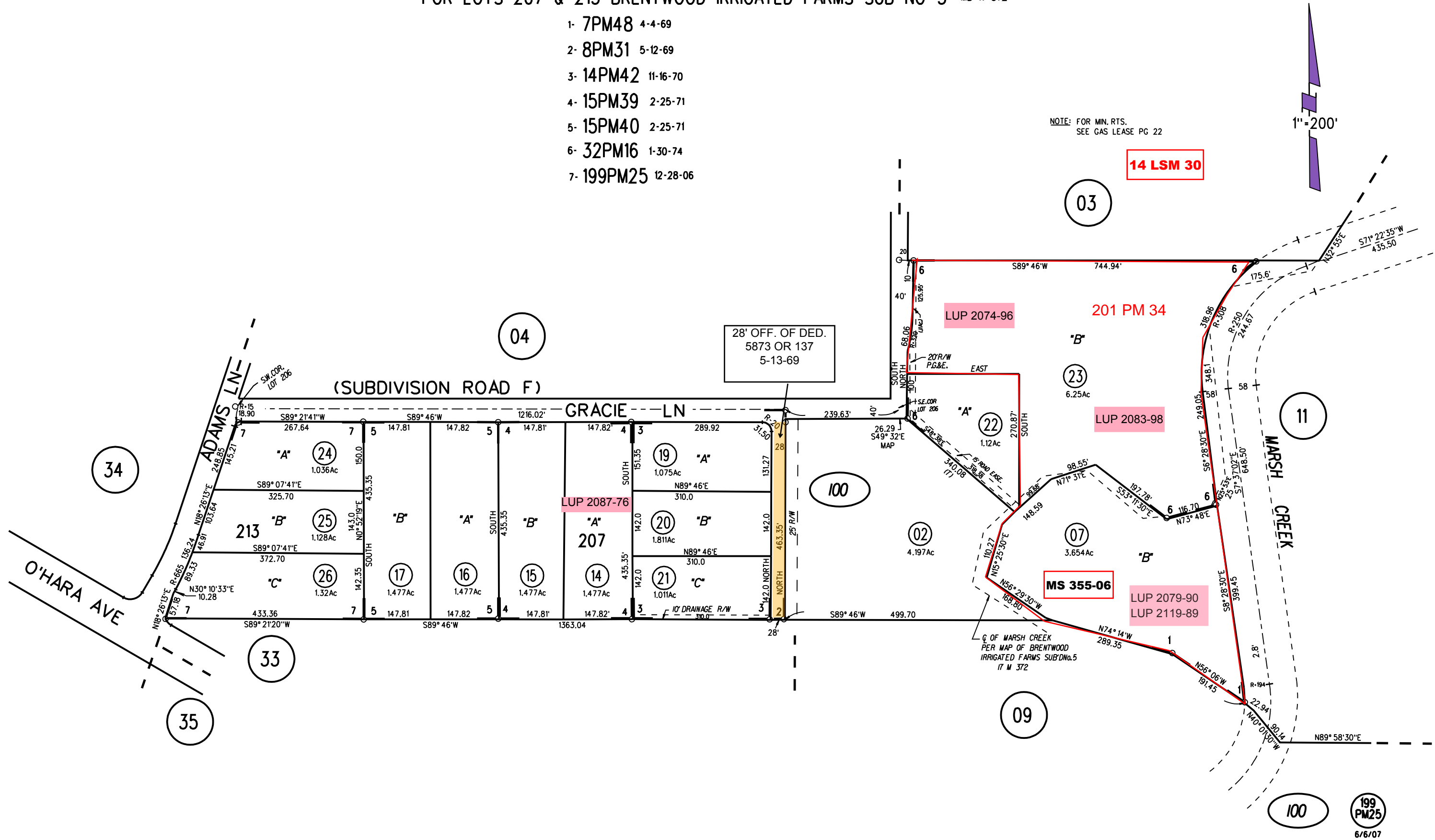


POR LOTS 207 & 213 BRENTWOOD IRRIGATED FARMS SUB NO 5 MB 17-372

- 1- 7PM48 4-4-69
- 2- 8PM31 5-12-69
- 3- 14PM42 11-16-70
- 4- 15PM39 2-25-71
- 5- 15PM40 2-25-71
- 6- 32PM16 1-30-74
- 7- 199PM25 12-28-06

NOTE: FOR MIN. RTS.  
SEE GAS LEASE PG 22

1"=200'



NOTE: THIS MAP WAS PREPARED FOR ASSESSMENT PURPOSES ONLY. NO LIABILITY IS ASSUMED FOR THE ACCURACY OF THE INFORMATION DELINEATED HEREON. ASSESSOR'S PARCELS MAY NOT COMPLY WITH LOCAL LOT SPLIT OR BUILDING SITE ORDINANCES.