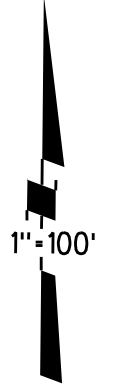


P.B.
18

POR. LOT 207, SUBDIVISION NO. 5, BRENTWOOD IRRIGATED FARMS AMENDED M.B. 17-372

1- 221P.M.36 12-27-23

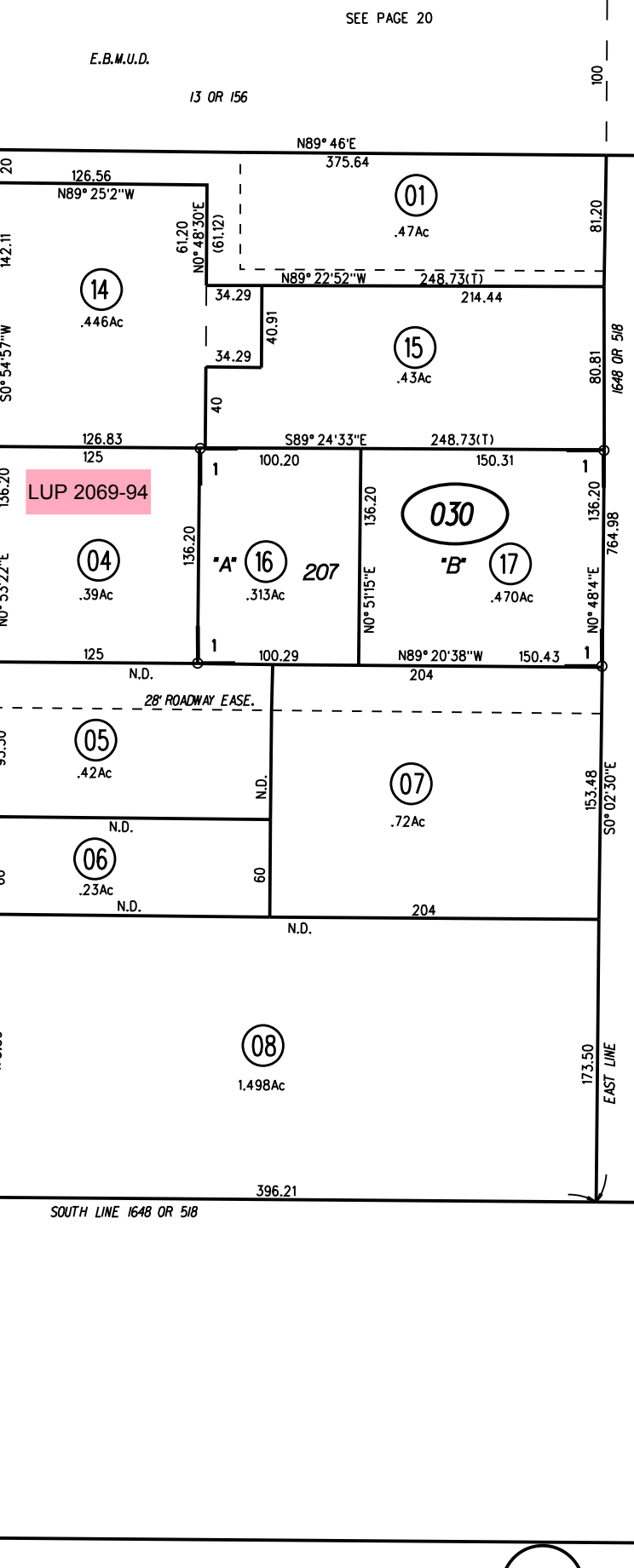
14 LSM 30



1" = 100'

GRANT STREET

NORTH OAK ROAD
LONE ROAD



02

04

NOTE FOR MIN. RTS.
SEE GAS LEASE PG. 22

NOTE: THIS MAP WAS PREPARED FOR ASSESSMENT PURPOSES ONLY. NO LIABILITY IS ASSUMED FOR THE ACCURACY OF THE INFORMATION DELINEATED HEREON. ASSESSOR'S PARCELS MAY NOT COMPLY WITH LOCAL LOT SPLIT OR BUILDING SITE ORDINANCES.

CENTER LINE MARSH CREEK

11

030

221 PM36

1/16/24

1961 ROLL
ASSESSOR'S MAP
BOOK 16 PAGE 3
1-20-59
G C C FM. 41/37
CONTRA COSTA COUNTY, CALIF.

10