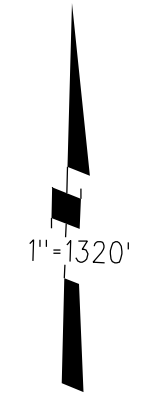
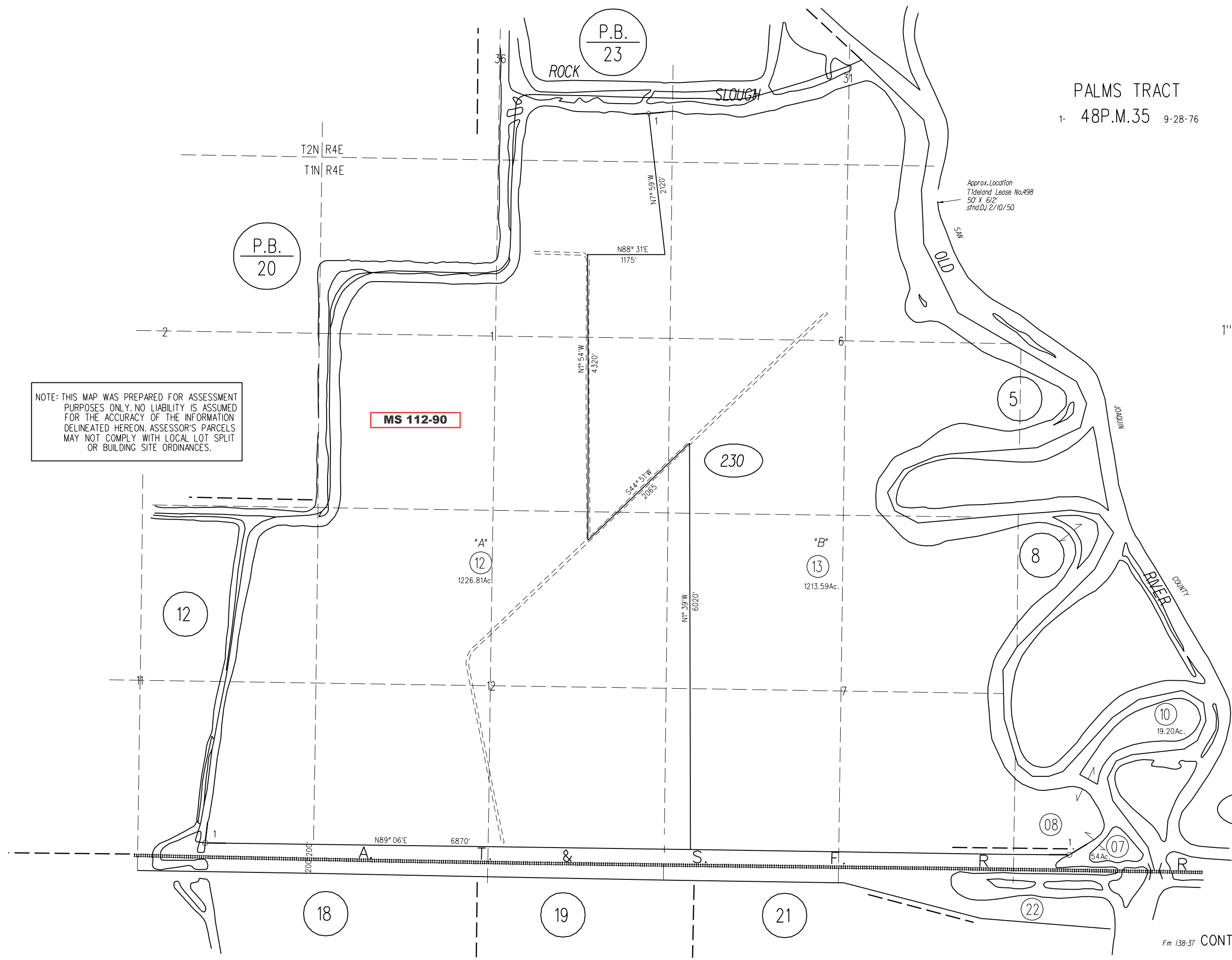


PALMS TRACT
 1- 48P.M.35 9-28-76



NOTE: THIS MAP WAS PREPARED FOR ASSESSMENT PURPOSES ONLY. NO LIABILITY IS ASSUMED FOR THE ACCURACY OF THE INFORMATION DELINEATED HEREON. ASSESSOR'S PARCELS MAY NOT COMPLY WITH LOCAL LOT SPLIT OR BUILDING SITE ORDINANCES.



REVISED	CHANGE	BY
11-16-92	17950-315	MJ

11-16-92
 1961 ROLL
 ASSESSOR'S MAP
 BOOK 15 PAGE 23
 Fm 138-37 CONTRA COSTA COUNTY, CALIF.