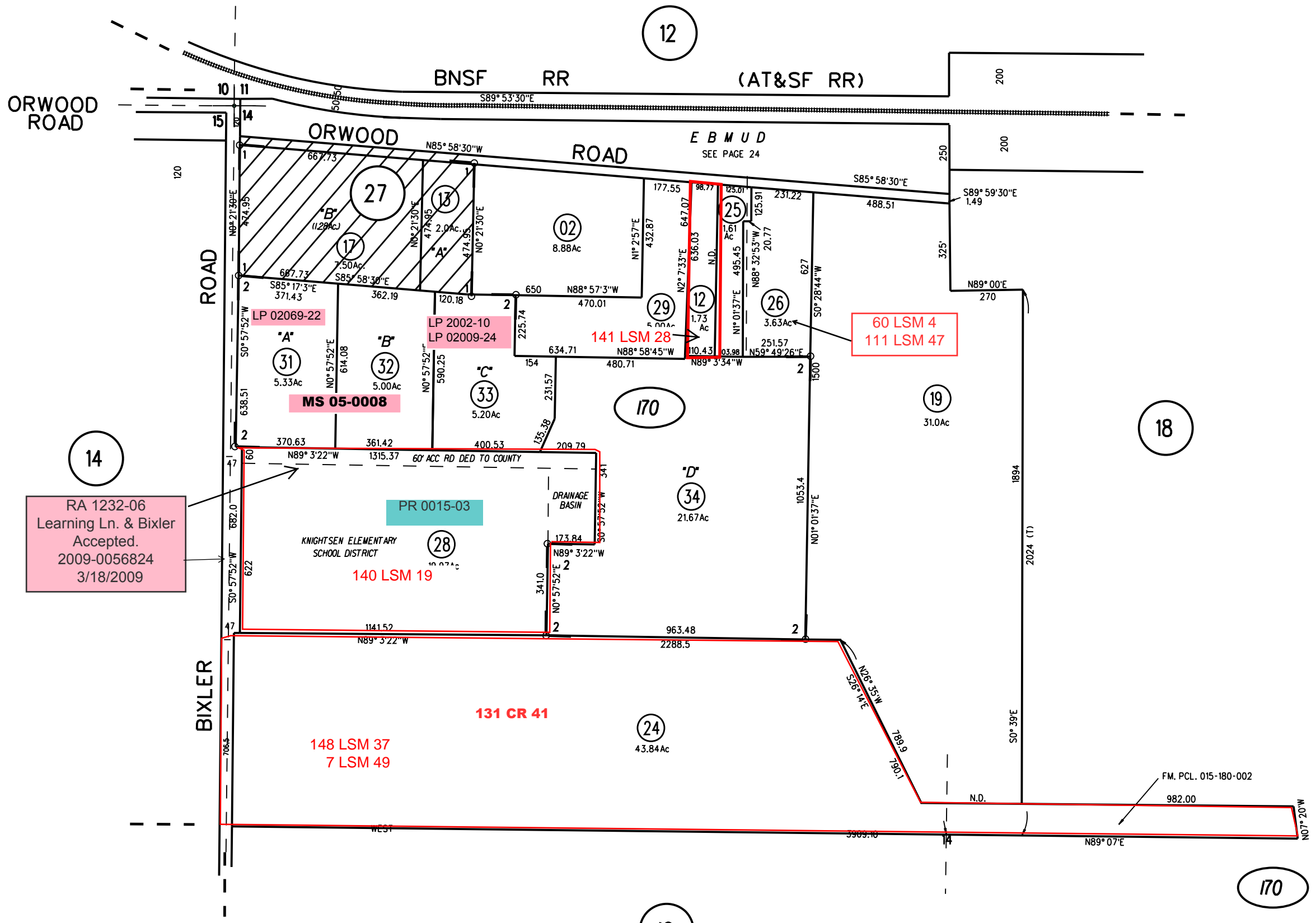
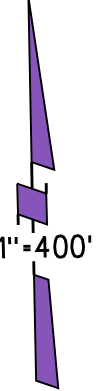


POR N 1/2 SEC14 T1N R3E MDBM

1- 33LSM29 3/18/65

2- 212PM24 4/21/17



RA 1232-06  
Learning Ln. & Bixler  
Accepted.  
2009-0056824  
3/18/2009

MS 05-0008

PR 0015-03

131 CR 41

148 LSM 37  
7 LSM 49

140 LSM 19

141 LSM 28

60 LSM 4  
111 LSM 47

NOTE: THIS MAP WAS PREPARED FOR ASSESSMENT PURPOSES ONLY. NO LIABILITY IS ASSUMED FOR THE ACCURACY OF THE INFORMATION DELINEATED HEREON. ASSESSOR'S PARCELS MAY NOT COMPLY WITH LOCAL LOT SPLIT OR BUILDING SITE ORDINANCES.

212 PM24  
8/24/17