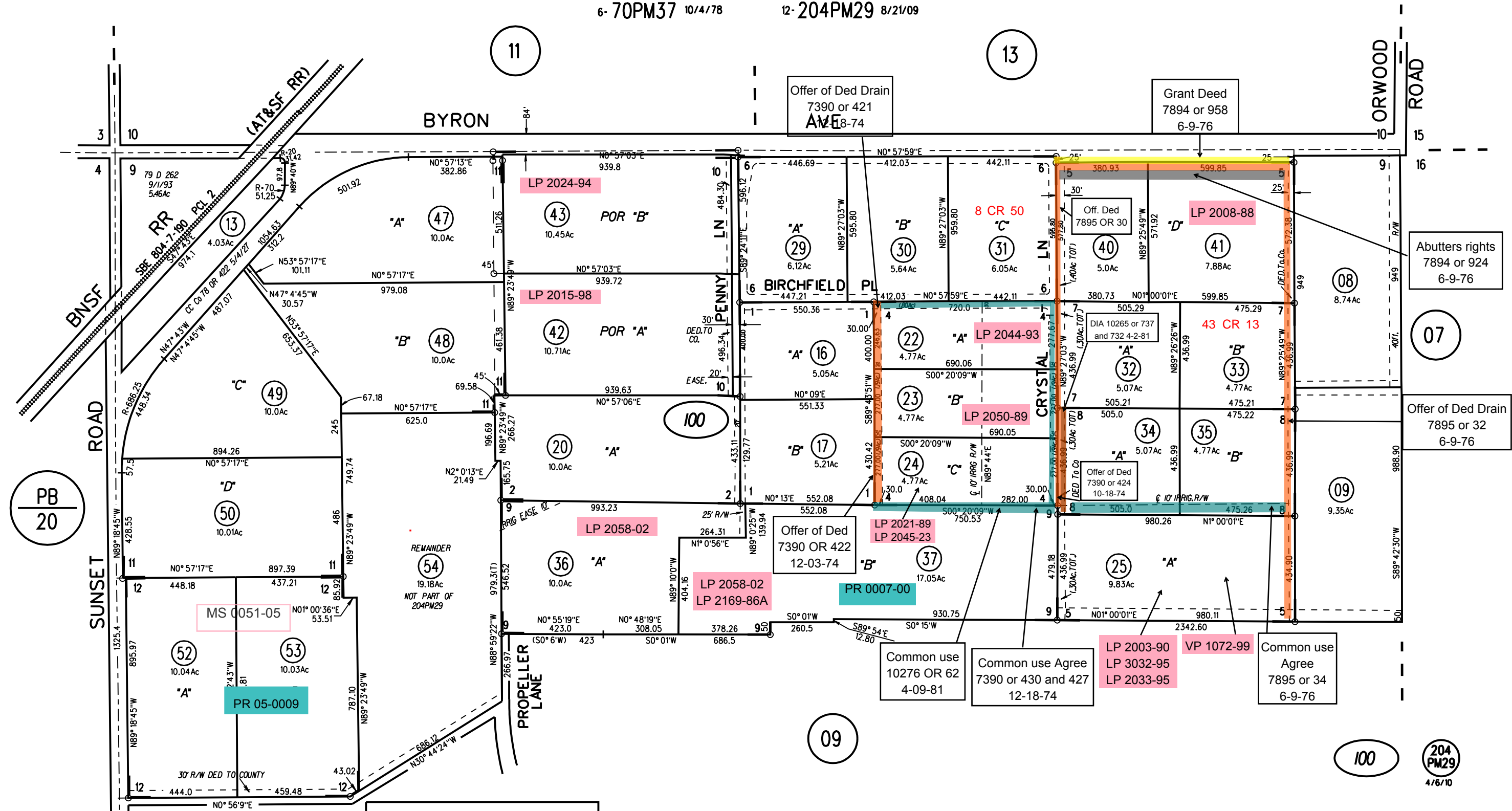


POR E 1/2 SEC 9 T1N R3E MDBM

- | | |
|--------------------|----------------------|
| 1- 2PM6 11/24/67 | 7- 78PM9 6/22/79 |
| 2- 50LSM37 2/5/68 | 8- 94PM1 4/2/81 |
| 3- 38LSM42 12/9/65 | 9- 130PM13 10/12/87 |
| 4- 36PM5 12/3/74 | 10- 141PM18 7/25/89 |
| 5- 45PM4 5/13/76 | 11- 163PM31 10/14/93 |
| 6- 70PM37 10/4/78 | 12- 204PM29 8/21/09 |



NOTE: THIS MAP WAS PREPARED FOR ASSESSMENT PURPOSES ONLY. NO LIABILITY IS ASSUMED FOR THE ACCURACY OF THE INFORMATION DELINEATED HEREON. ASSESSOR'S PARCELS MAY NOT COMPLY WITH LOCAL LOT SPLIT OR BUILDING SITE ORDINANCES.