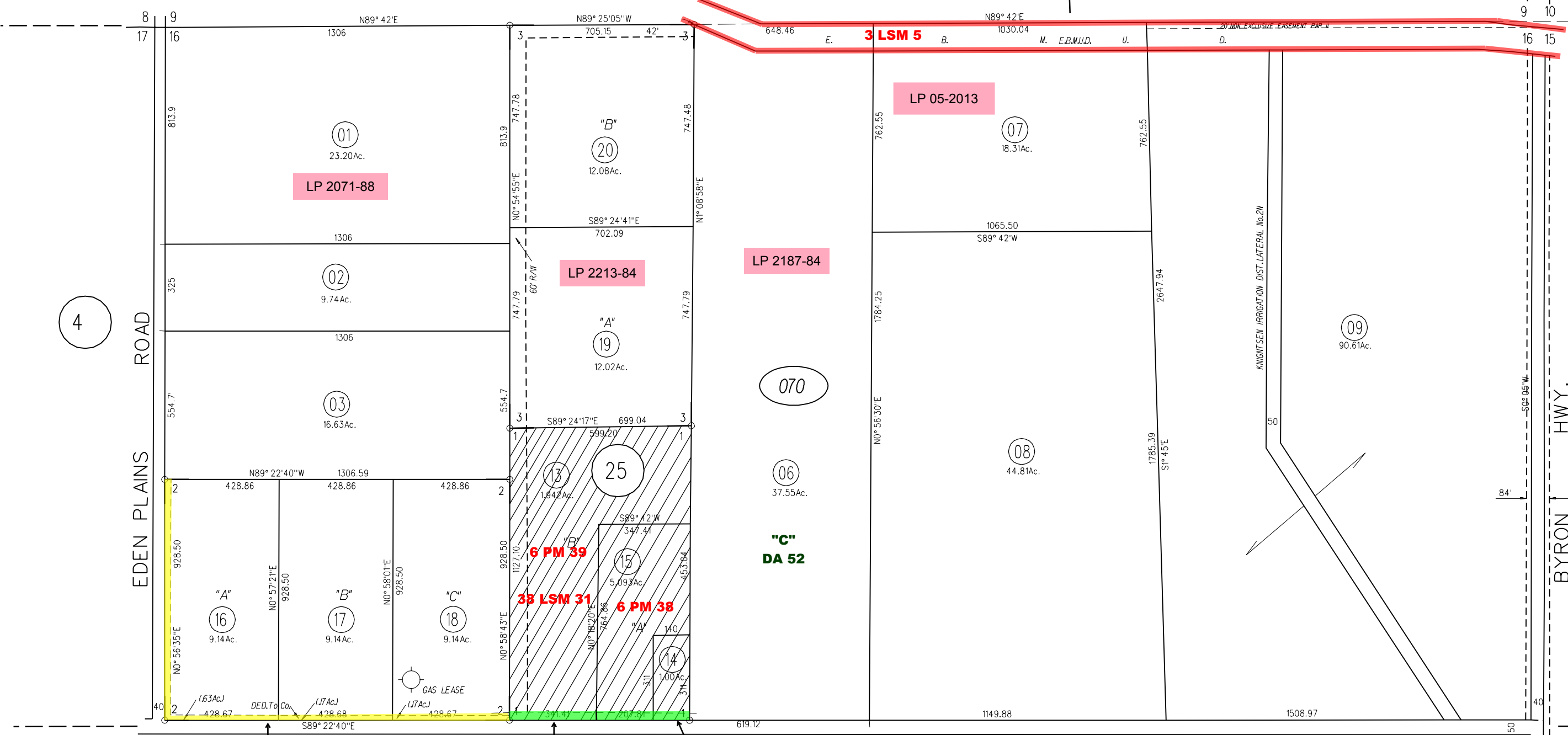


N 1/2 SEC. 16-T.1N. R.3E. M.D.B.M.

- 1969-1- 41 L.S.M.20 4-6-66
- 2- 59P.M.18 & 19 11-3-77
- 3- 74P.M.15,16 & 17 2-15-79

9

10



EDEN PLAINS ROAD

BYRON HWY.

CHESTNUT ST.

Offer of Ded
8577 or 324
11-31-77

Widening
5782 or 210
1-2-69

Widening
5782 or 209
1-2-69

NOTE: THIS MAP WAS PREPARED FOR ASSESSMENT PURPOSES ONLY. NO LIABILITY IS ASSUMED FOR THE ACCURACY OF THE INFORMATION DELINEATED HEREON. ASSESSOR'S PARCELS MAY NOT COMPLY WITH LOCAL LOT SPLIT OR BUILDING SITE ORDINANCES.