

POR. NE 1/4 SEC. 33 T1N R3N M.D.B. & M.

1-1974- 32P.M.2 1-15-74

ASSESSOR'S MAP  
BOOK 11 PAGE 26  
CONTRA COSTA COUNTY, CALIF.  
FROM PAGE 10 BOOK C.L.W. 2-7-74

7/19/89 *ve*

1" = 100'

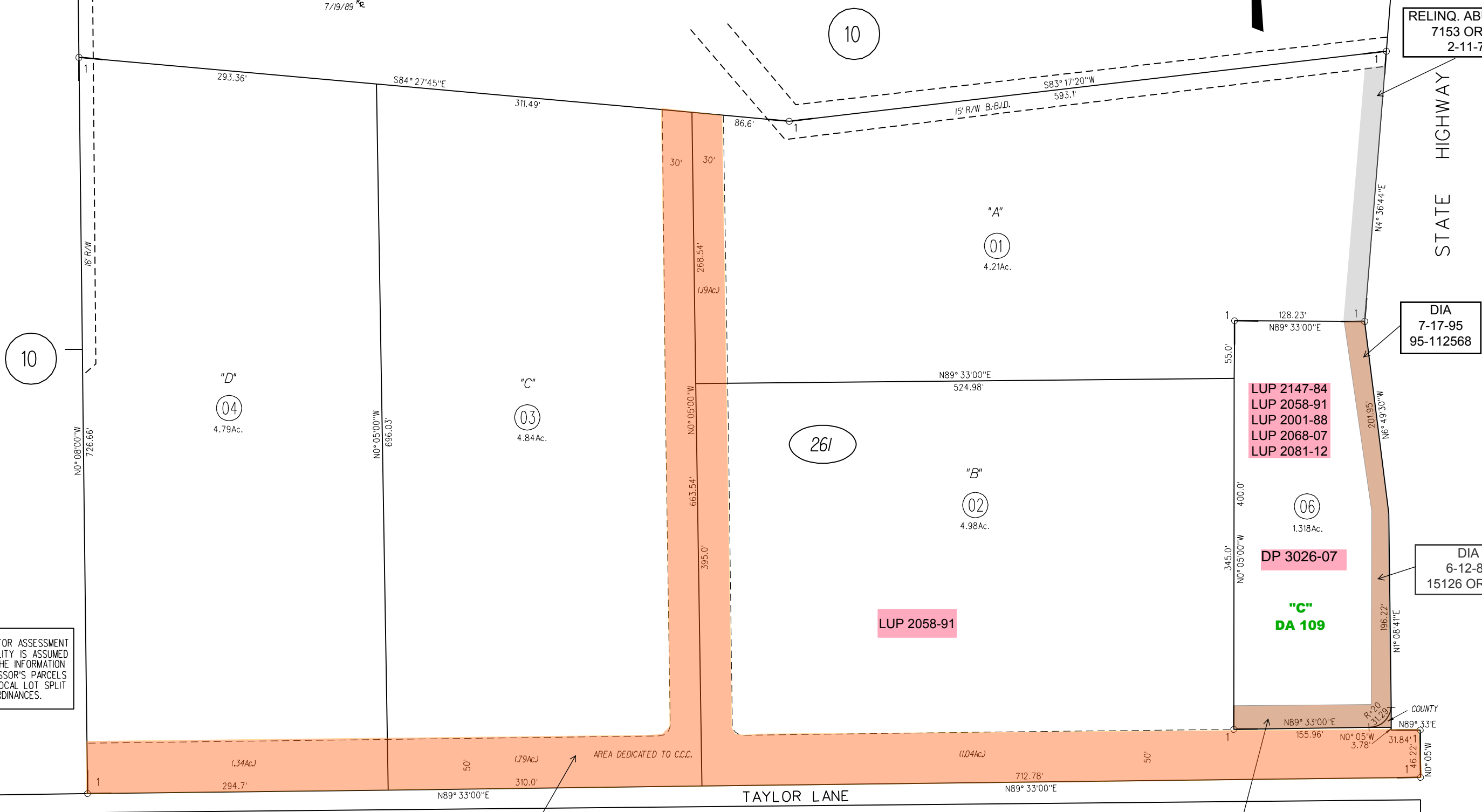
RELINQ. ABUT. RTS  
7153 OR 702  
2-11-74

STATE HIGHWAY

DIA  
7-17-95  
95-112568

DIA  
6-12-89  
15126 OR 891

DIA  
7-17-95  
95-112567



NOTE: THIS MAP WAS PREPARED FOR ASSESSMENT PURPOSES ONLY. NO LIABILITY IS ASSUMED FOR THE ACCURACY OF THE INFORMATION DELINEATED HEREON. ASSESSOR'S PARCELS MAY NOT COMPLY WITH LOCAL LOT SPLIT OR BUILDING SITE ORDINANCES.

OFFER OF DED.  
7153 OR 616  
2-11-74

09

261