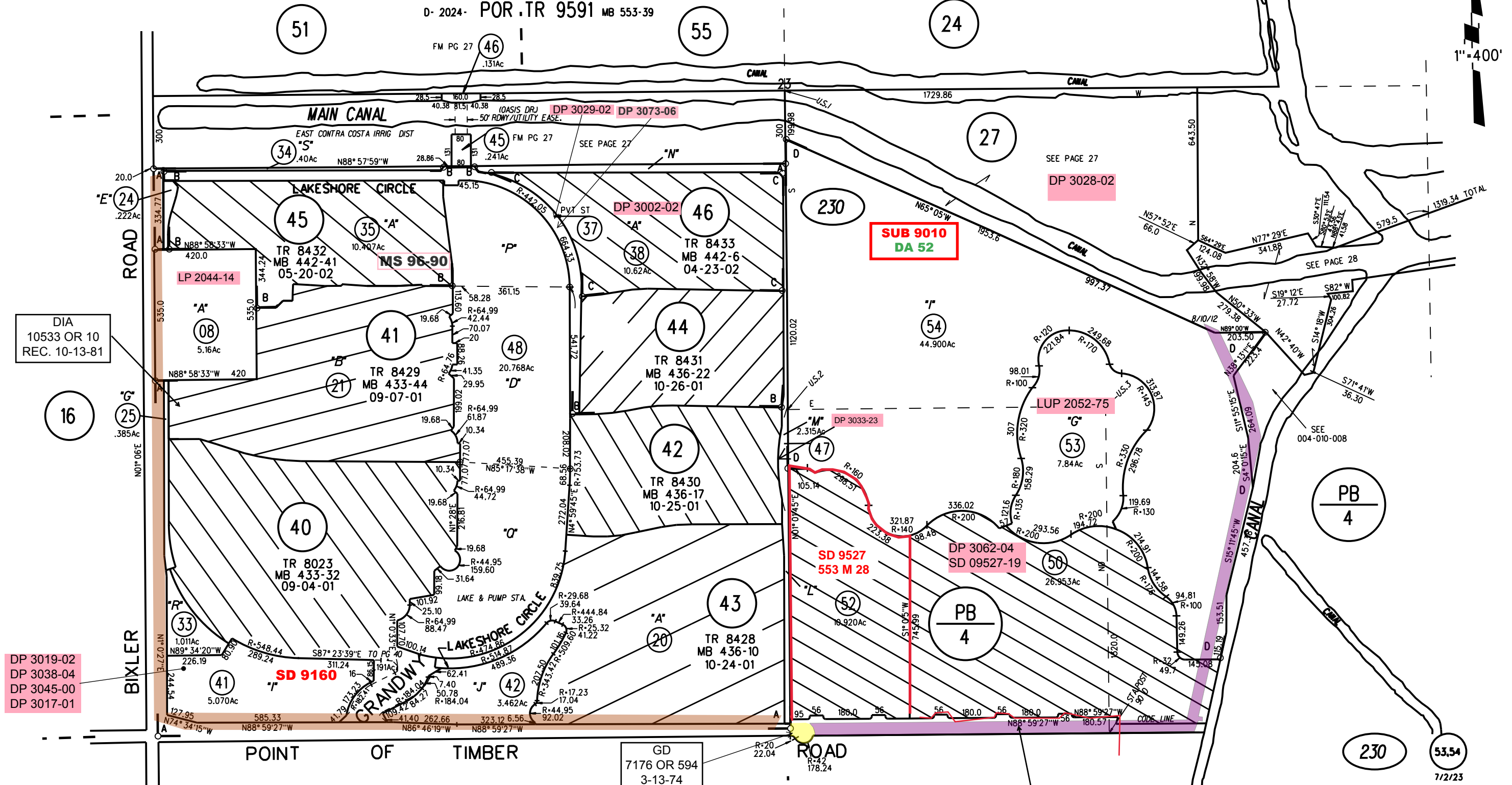


POR S 1/2 SEC 23 T1N R3E MDB&M

- A- 2002- POR TR 8023 MB 433-32 (LAKESHORE 1) 1- 97PM50 10-13-81
- B- 2002- POR TR 8430 MB 436-17 (LAKESHORE 4) 2- 135PM37 9-15-88
- C- 2002- POR TR 8431 MB 436-22 (LAKESHORE 5) 3- 149PM18 11-01-90
- D- 2024- POR TR 9591 MB 553-39

1" = 400'



DIA
10533 OR 10
REC. 10-13-81

DP 3019-02
DP 3038-04
DP 3045-00
DP 3017-01

NOTE: THIS MAP WAS PREPARED FOR ASSESSMENT PURPOSES ONLY. NO LIABILITY IS ASSUMED FOR THE ACCURACY OF THE INFORMATION DELINEATED HEREON. ASSESSOR'S PARCELS MAY NOT COMPLY WITH LOCAL LOT SPLIT OR BUILDING SITE ORDINANCES.

SEE A8953-73
ABANDONED
6978 OR 928
6-22-73
RES. # 73/428