

PB
19

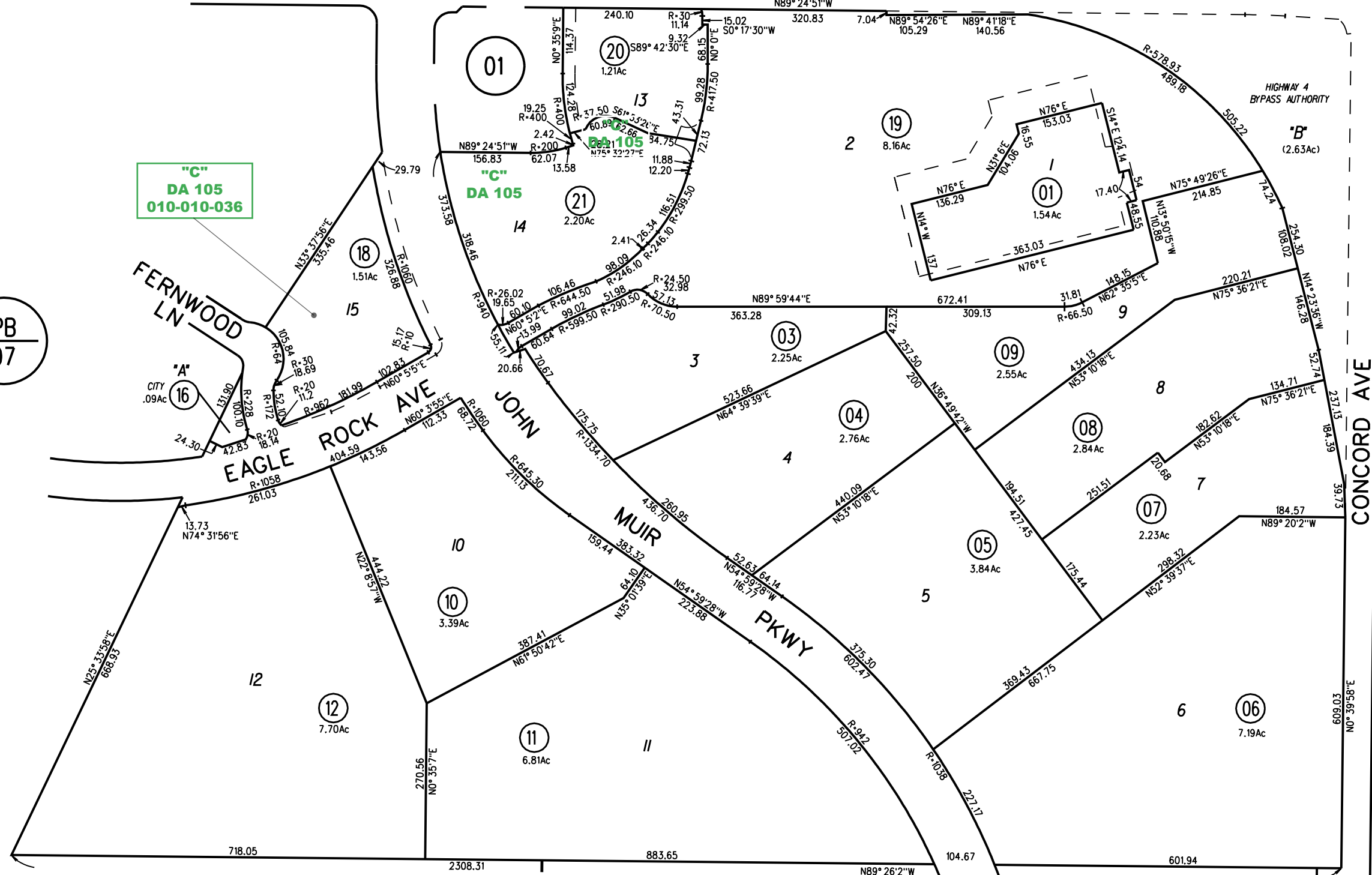
BALFOUR RD

1"=200'



"C"
DA 105
010-010-036

PB
07



02

STATE HIGHWAY 4

840

21

05/14/09

NOTE: THIS MAP WAS PREPARED FOR ASSESSMENT PURPOSES ONLY. NO LIABILITY IS ASSUMED FOR THE ACCURACY OF THE INFORMATION DELINEATED HEREON. ASSESSOR'S PARCELS MAY NOT COMPLY WITH LOCAL LOT SPLIT OR BUILDING SITE ORDINANCES.

PB
07

83

01