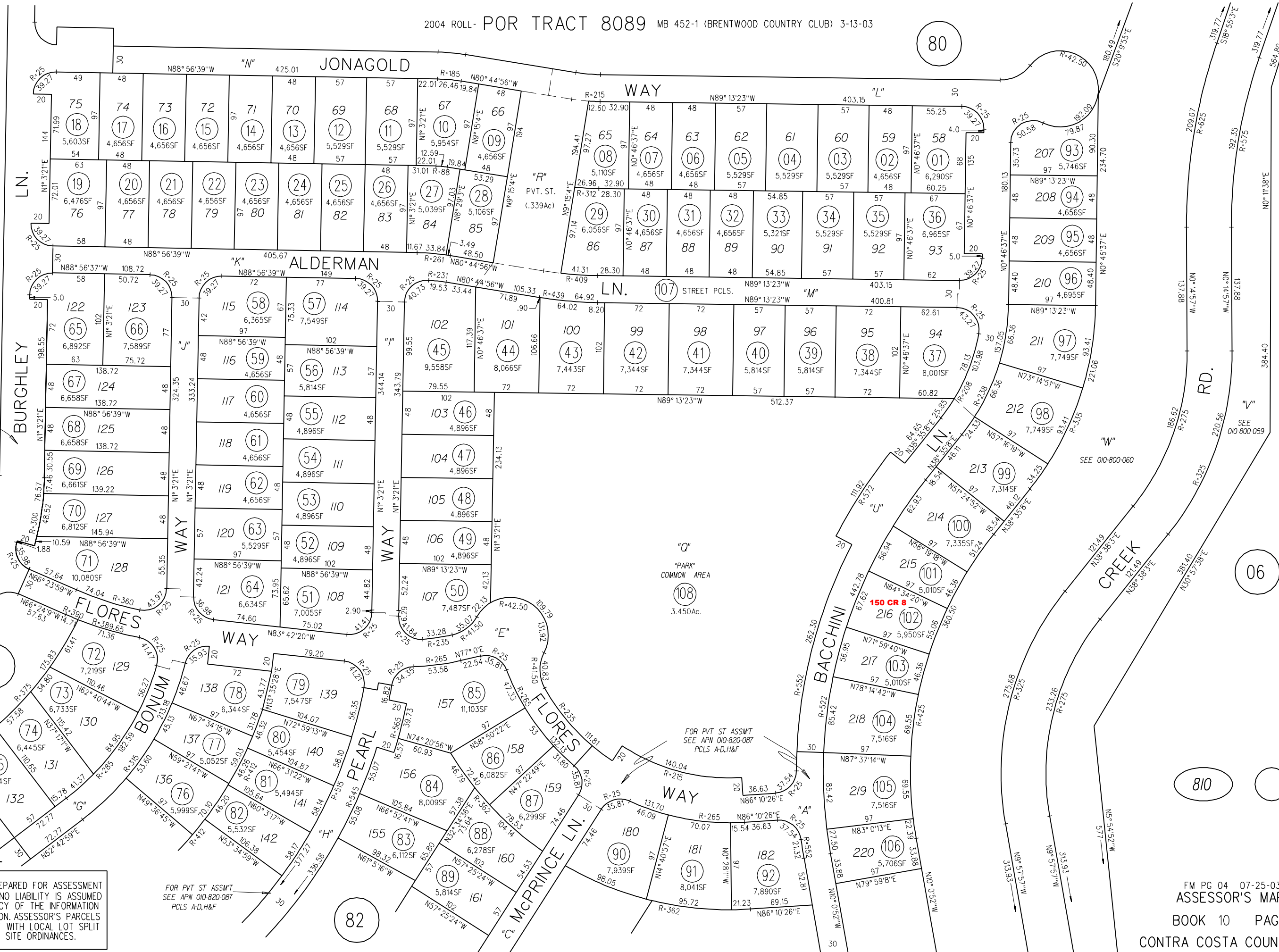


80

M-24, 25



1" = 100'



FOR PVT ST ASSMT SEE APN 010-780-039

FOR PVT ST ASSMT SEE APN 010-780-039

FOR PVT ST ASSMT SEE APN 010-820-087 PCLS A-D,H&F

FOR PVT ST ASSMT SEE APN 010-820-087 PCLS A-D,H&F

NOTE: THIS MAP WAS PREPARED FOR ASSESSMENT PURPOSES ONLY. NO LIABILITY IS ASSUMED FOR THE ACCURACY OF THE INFORMATION DELINEATED HEREON. ASSESSOR'S PARCELS MAY NOT COMPLY WITH LOCAL LOT SPLIT OR BUILDING SITE ORDINANCES.