

BALFOUR ROAD

1993 ROLL-TRACT 7370 M.B. 361-35 (FOUR SEASONS-UNIT II-A)  
A-1994 ROLL-TRACT 7755 M.B. 369-17 (FOUR SEASONS-UNIT II-B)

FLAGSTONE CT



28 WEATHERLY CT

NOTE: THIS MAP WAS PREPARED FOR ASSESSMENT PURPOSES ONLY. NO LIABILITY IS ASSUMED FOR THE ACCURACY OF THE INFORMATION DELINEATED HEREON.

| REVISED  | CHANGE           | BY |
|----------|------------------|----|
| 05-20-93 | LLA PCLS 77-82   | MJ |
| 01-13-93 | T7755(PCL86-121) | IB |
| 09-22-94 | LLA CRE 122-124  | TA |
| 04-06-98 | LLA PCL A        | KR |

MARSH CREEK CHANNEL

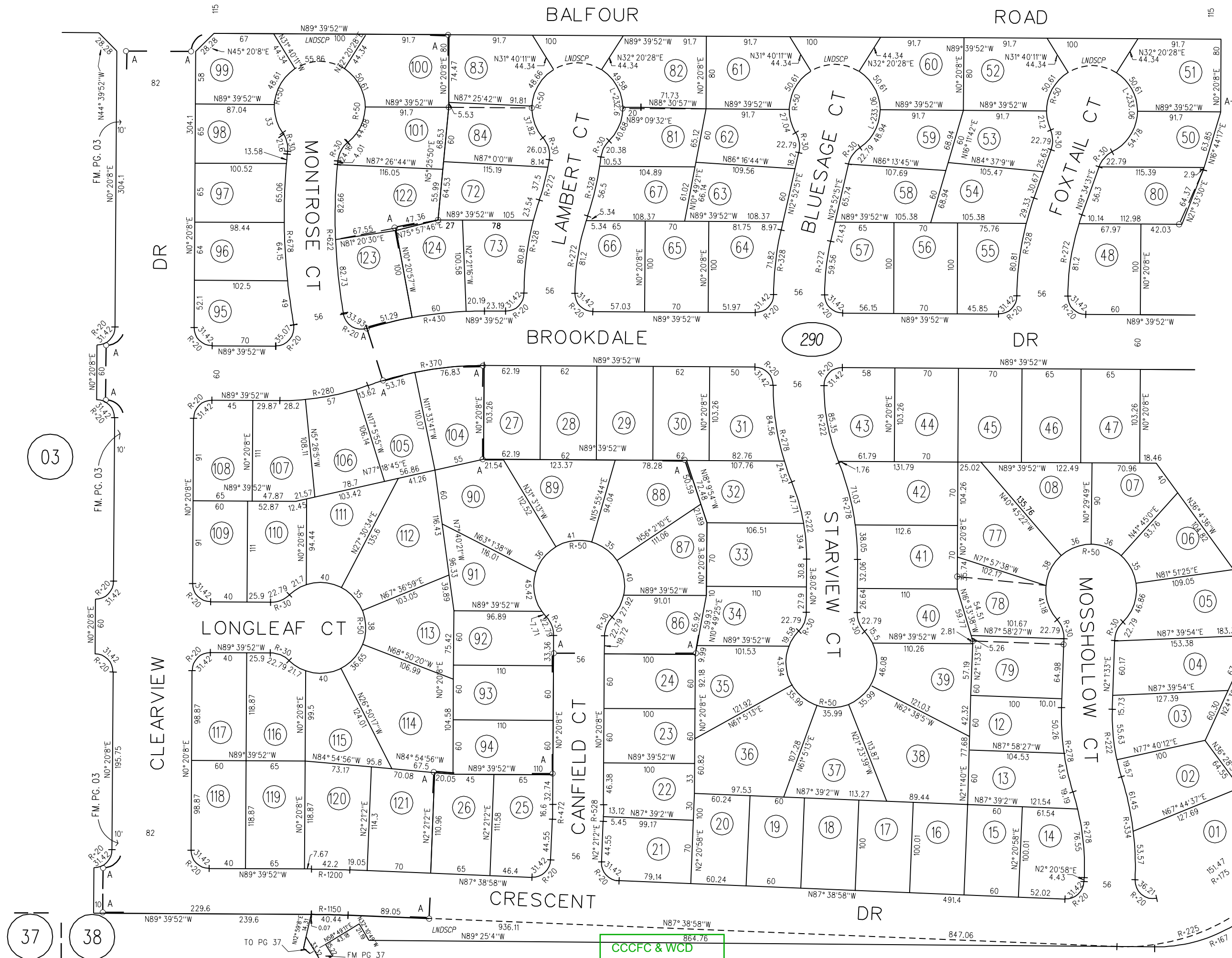
ASSessor's MAP

BOOK 10 PAGE 29

CONTRA COSTA COUNTY, CALIF.

CCCFC & WCD  
5897 OR 837 06/12/69

DRY CREEK



03

37

38

290

28

290

FM. PG. 03 8-17-92