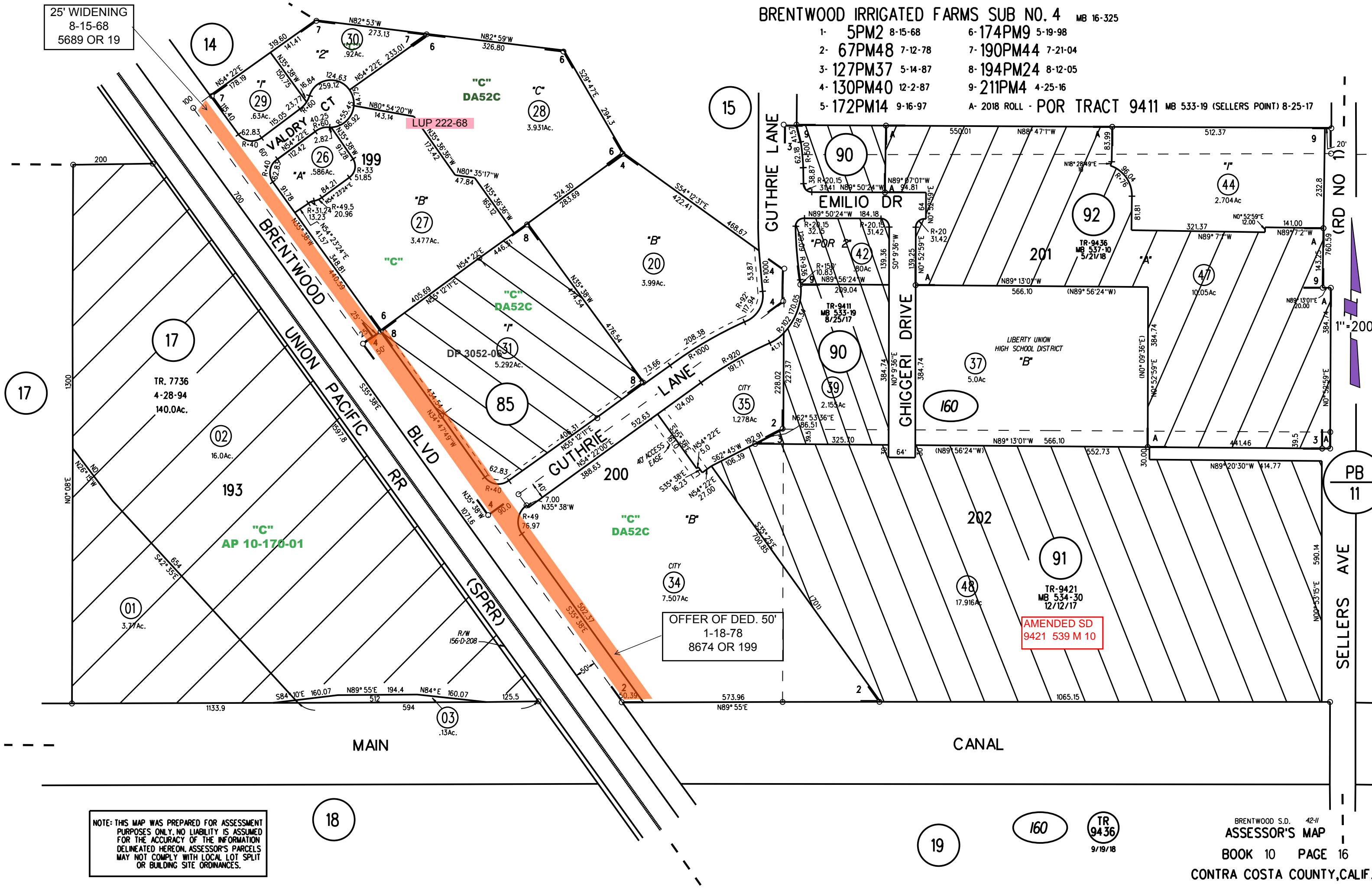


25' WIDENING
8-15-68
5689 OR 19

BRENTWOOD IRRIGATED FARMS SUB NO. 4 MB 16-325

- 1- 5PM2 8-15-68
- 2- 67PM48 7-12-78
- 3- 127PM37 5-14-87
- 4- 130PM40 12-2-87
- 5- 172PM14 9-16-97
- 6- 174PM9 5-19-98
- 7- 190PM44 7-21-04
- 8- 194PM24 8-12-05
- 9- 211PM4 4-25-16
- A- 2018 ROLL - POR TRACT 9411 MB 533-19 (SELLERS POINT) 8-25-17



NOTE: THIS MAP WAS PREPARED FOR ASSESSMENT PURPOSES ONLY. NO LIABILITY IS ASSUMED FOR THE ACCURACY OF THE INFORMATION DELINEATED HEREON. ASSESSOR'S PARCELS MAY NOT COMPLY WITH LOCAL LOT SPLIT OR BUILDING SITE ORDINANCES.