

P.B.
57

SEC 21 & POR SEC 22 T1N R2E MDBM
A-2000-TRACT 7690 MB 407-6 (DEER CREEK COUNTRY CLUB) 1/25/1999

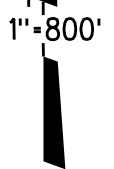
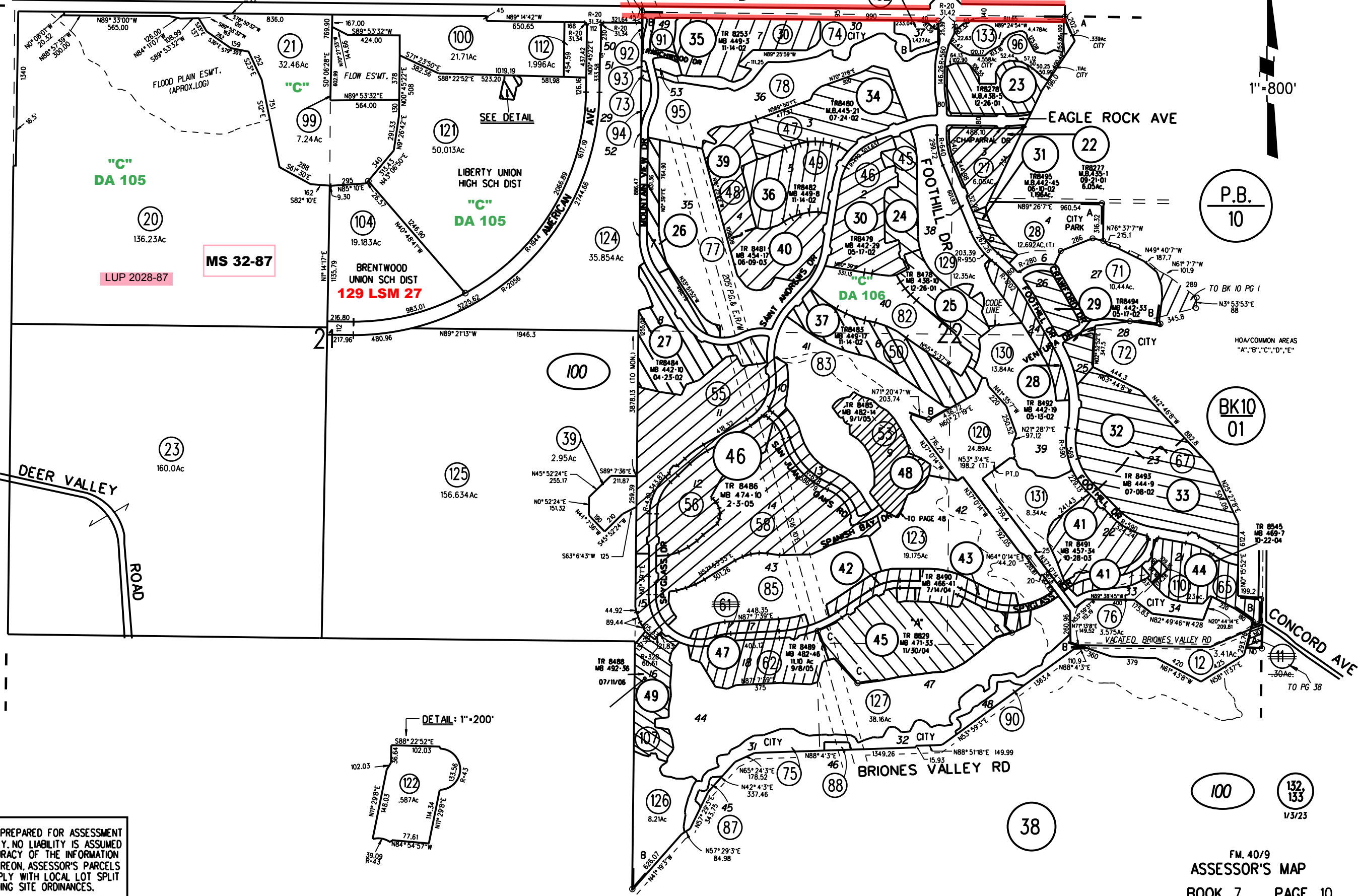
PB
19

"2002" B-TRACT 8310 MB 427-29 (DEER VILLAGE LOTS) 12/29/2000
"2005" C-PCL A TR 8490 MB 466-41 7/14/2004

BALFOUR

RD 127 LSM 40

E COUNTRY CLUB DR

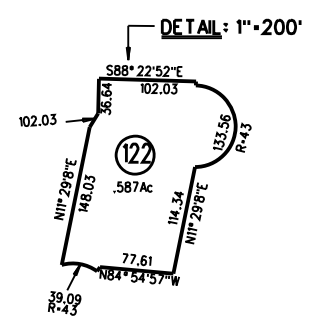


P.B.
10

BK10
01

100
132
133
1/3/23

01



NOTE: THIS MAP WAS PREPARED FOR ASSESSMENT PURPOSES ONLY. NO LIABILITY IS ASSUMED FOR THE ACCURACY OF THE INFORMATION DELINEATED HEREON. ASSESSOR'S PARCELS MAY NOT COMPLY WITH LOCAL LOT SPLIT OR BUILDING SITE ORDINANCES.