

SEC 19&20 T1N R2E MDBM

- 1- 21PM22 3/24/72
- 2- POR 79PM18 7/26/79
- 3- 135PM45 9/21/88
- 4- 194PM1 7/6/05
- 5- 220PM32 12/29/22

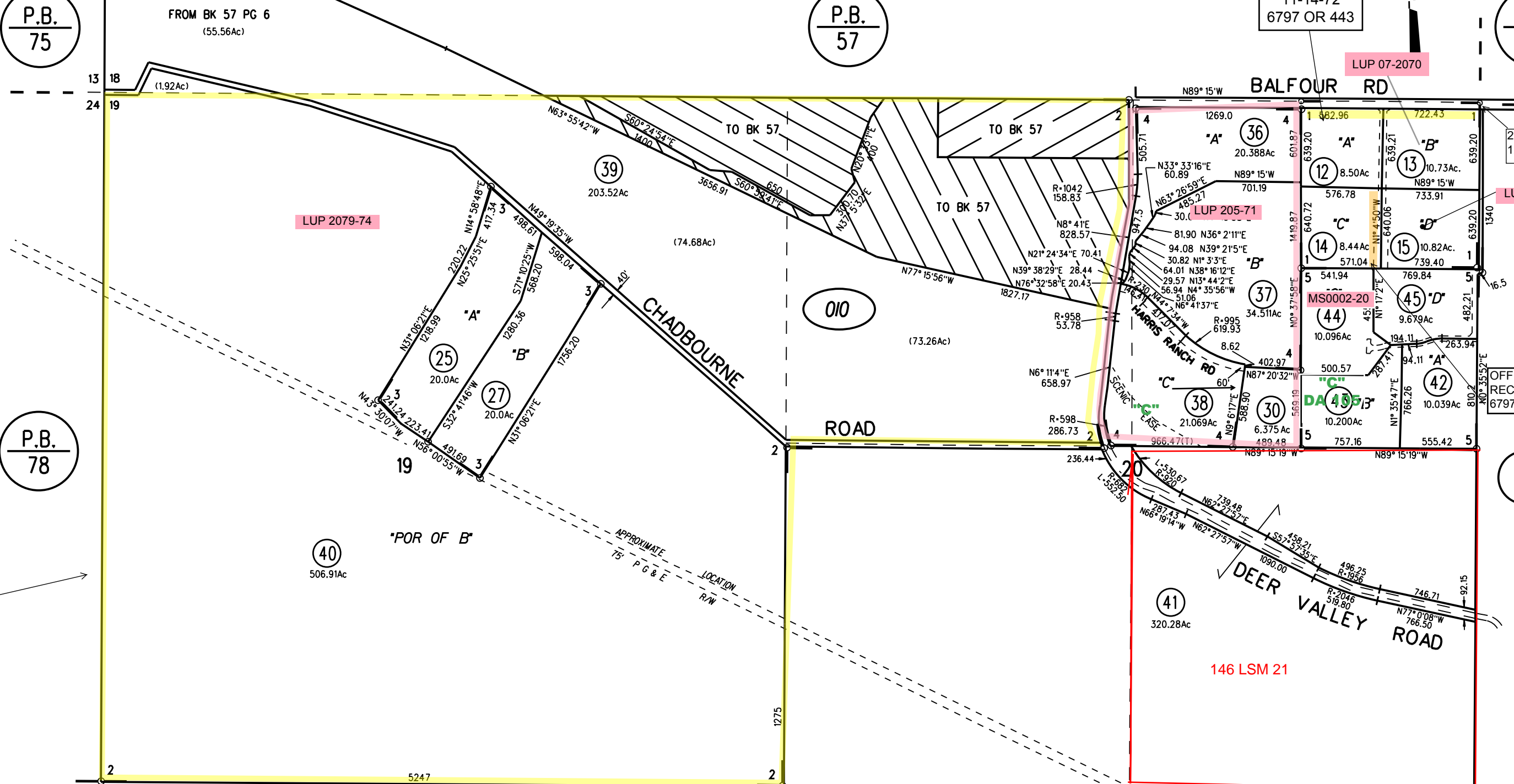
GD  
11-14-72  
6797 OR 443

1"=800'

P.B.  
75

P.B.  
57

P.B.  
19



GD DEV. RTS  
14004 OR 857  
11-6-87

NOTE: THIS MAP WAS PREPARED FOR ASSESSMENT PURPOSES ONLY. NO LIABILITY IS ASSUMED FOR THE ACCURACY OF THE INFORMATION DELINEATED HEREON. ASSESSOR'S PARCELS MAY NOT COMPLY WITH LOCAL LOT SPLIT OR BUILDING SITE ORDINANCES.