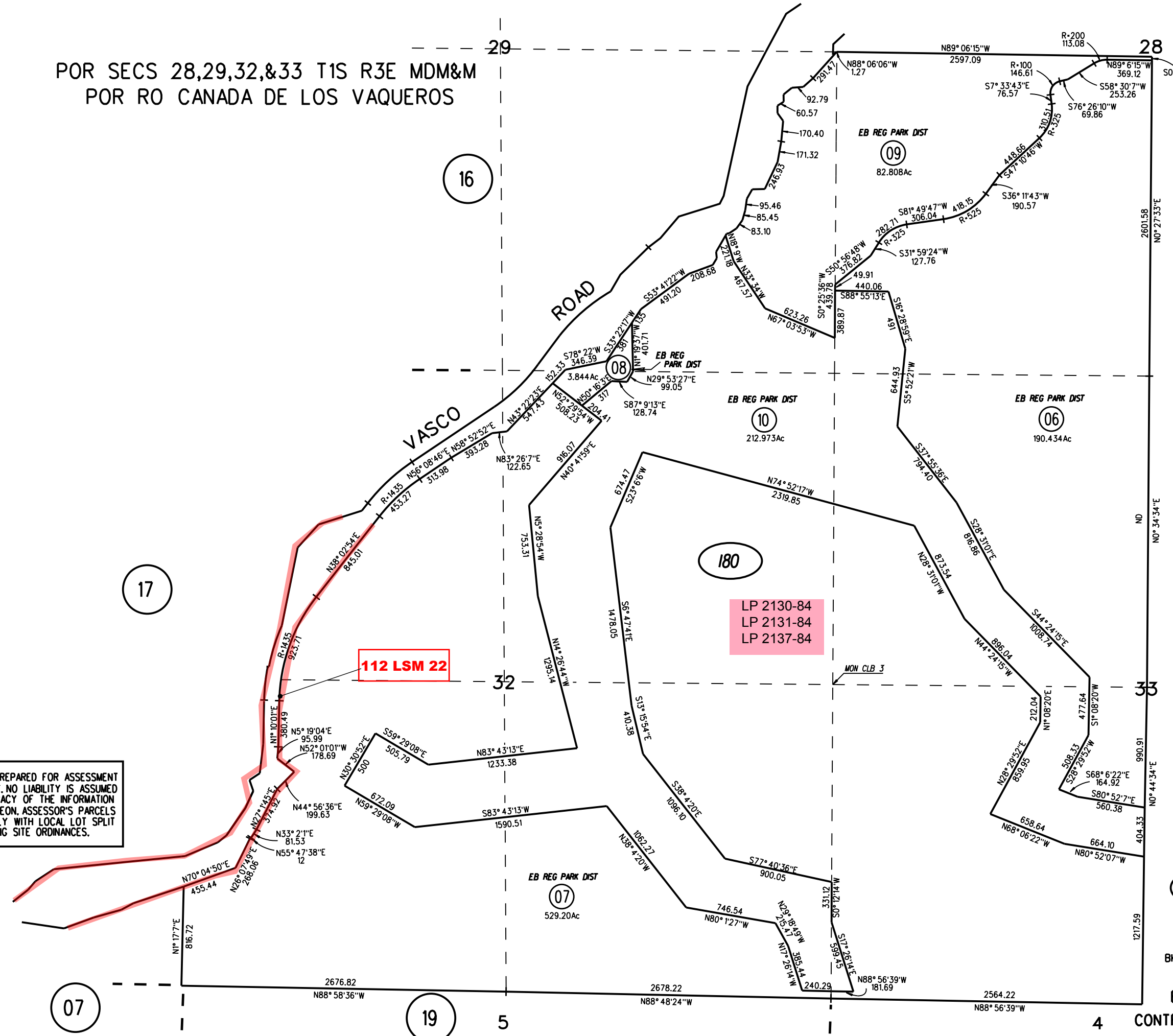


POR SECS 28,29,32,&33 T1S R3E MDM&M
 POR RO CANADA DE LOS VAQUEROS

1"=800'

NOTE: THIS MAP WAS PREPARED FOR ASSESSMENT PURPOSES ONLY. NO LIABILITY IS ASSUMED FOR THE ACCURACY OF THE INFORMATION DELINEATED HEREON. ASSESSOR'S PARCELS MAY NOT COMPLY WITH LOCAL LOT SPLIT OR BUILDING SITE ORDINANCES.



PB
01

180 (09,10)
1/19/18

FM BK 1 PG 2 &
 BK 5 PGS 16,17&18 2/10/11
 ASSESSOR'S MAP

BOOK 5 PAGE 18

CONTRA COSTA COUNTY, CALIF.