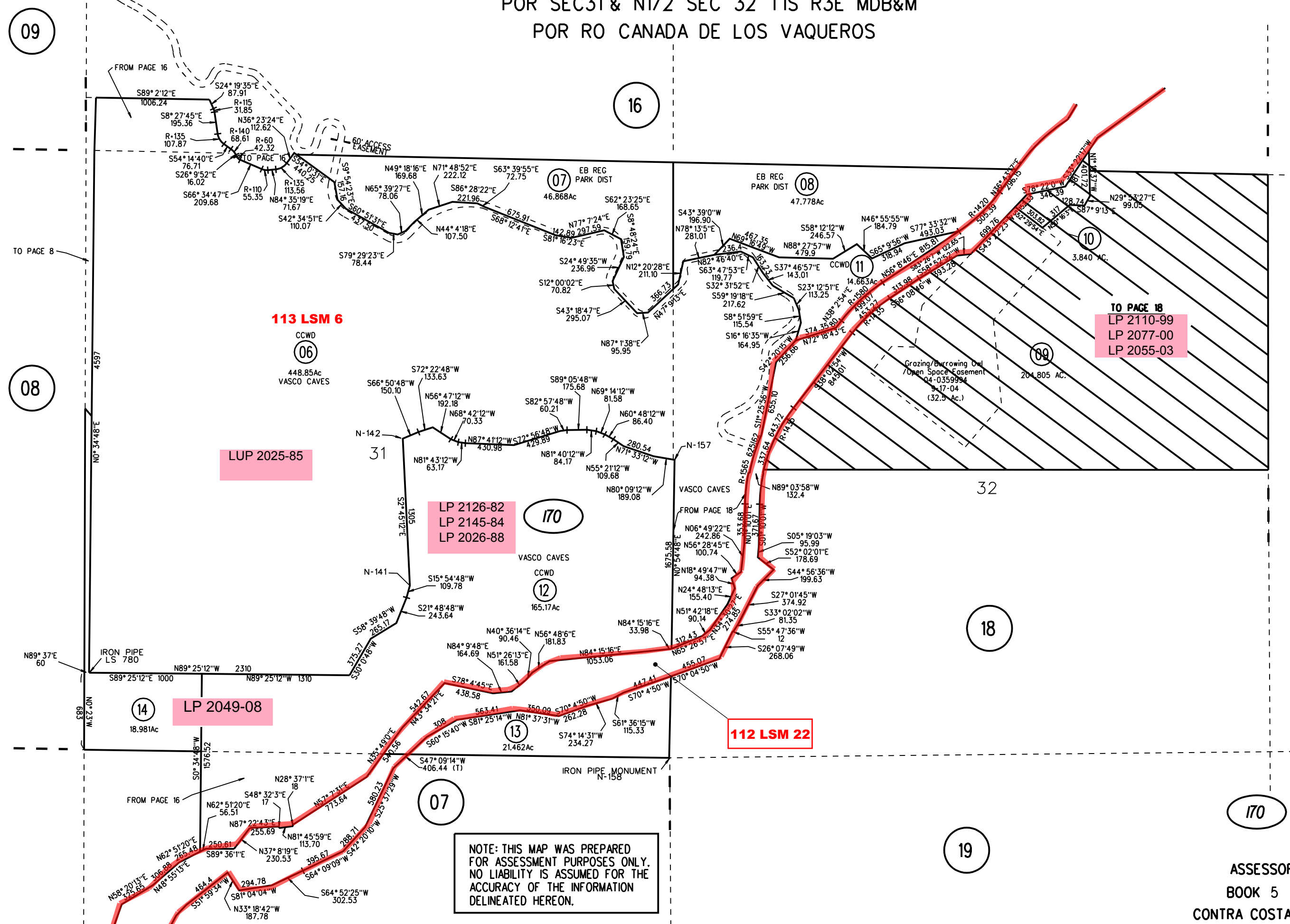


POR SEC31 & N1/2 SEC 32 T1S R3E MDB&M
 POR RO CANADA DE LOS VAQUEROS



113 LSM 6

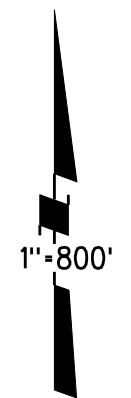
LUP 2025-85

LP 2126-82
 LP 2145-84
 LP 2026-88

112 LSM 22

LP 2049-08

NOTE: THIS MAP WAS PREPARED FOR ASSESSMENT PURPOSES ONLY. NO LIABILITY IS ASSUMED FOR THE ACCURACY OF THE INFORMATION DELINEATED HEREON.



BK 01