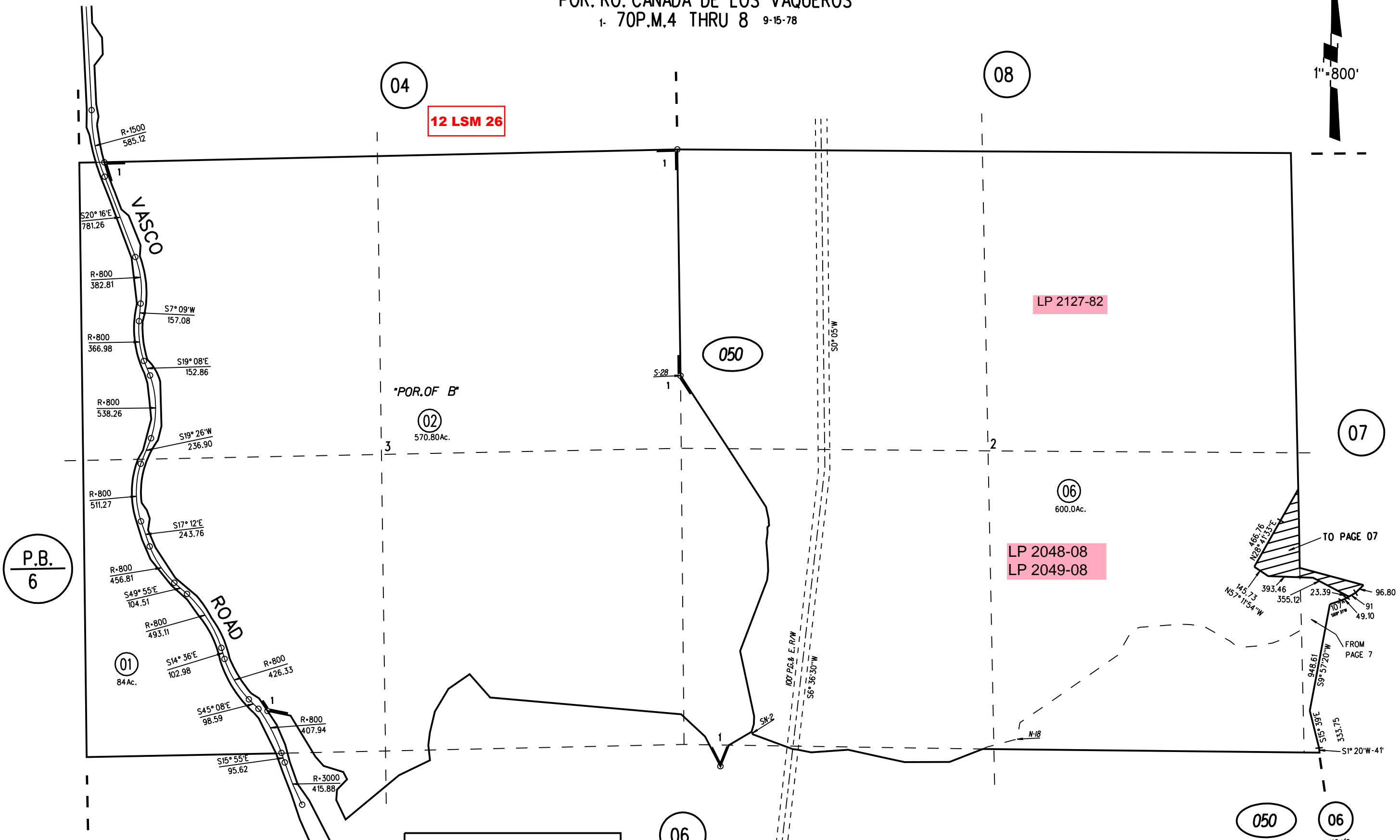


SEC. 2 & 3 T2S R2E M.D.B. & M.
 POR. RO. CANADA DE LOS VAQUEROS
 1. 70P.M.4 THRU 8 9-15-78

1"=800'



P.B.
6

12 LSM 26

LP 2127-82

LP 2048-08
LP 2049-08

050 06
 4/12/10
 Fm. 117-5
 ASSESSOR'S MAP
 BOOK 5 PAGE 5
 CONTRA COSTA COUNTY, CALIF.