

POR. SECS. 23-24-25-26
35 & 36 T1N R3E &
19-20-29-30-31 & 32
T1N R4E M.D.B. & M.

P.B.
11

P.B.
15

POINT OF TIMBER
ROAD
TO PCL.11-220-018

G. D. TO RECLAMATION
DIST. #800, 40' DRAIN
ESMT. REC. 1-5-72
6557 OR 56

OFF. OF DED.
10128 OR 301
REC. 12-12-80
SUPERCEDES
9616 OR 792
REC 11-13-79

DP 3017-24
SD 9685-24
RZ 3273-24
GP 0001-24

"C"
DA-45

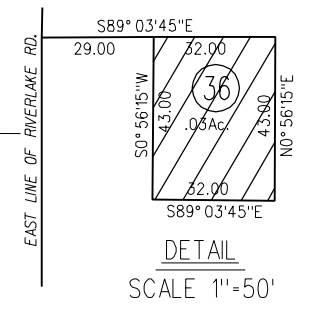
102 LSM 3

250 CR 13

PR 00008-21

LUP 64-72

NOTE: THIS MAP WAS PREPARED FOR ASSESSMENT
PURPOSES ONLY. NO LIABILITY IS ASSUMED
FOR THE ACCURACY OF THE INFORMATION
DELINEATED HEREON. ASSESSOR'S PARCELS
MAY NOT COMPLY WITH LOCAL LOT SPLIT
OR BUILDING SITE ORDINANCES.



1"=1200'

500