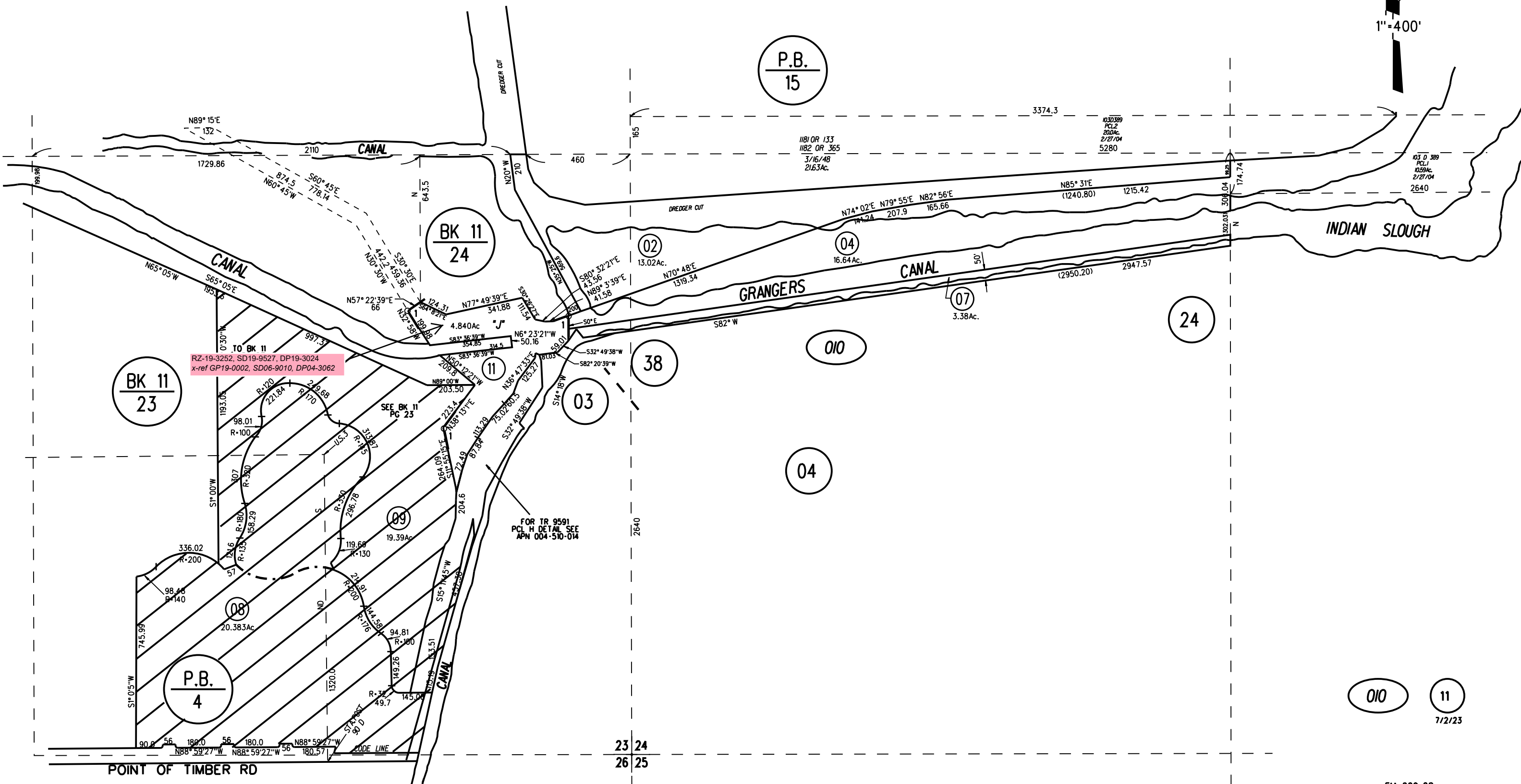


POR. SEC. 23 & 24 T1N R3E M.D.B.&M.

1- POR TR 9591 MB 553-39 (4/14/23)

1" = 400'



RZ-19-3252, SD19-9527, DP19-3024
x-ref GP19-0002, SD06-9010, DP04-3062

FOR TR 9591
PCL H DETAIL SEE
APN 004-510-014

NOTE: THIS MAP WAS PREPARED FOR ASSESSMENT PURPOSES ONLY. NO LIABILITY IS ASSUMED FOR THE ACCURACY OF THE INFORMATION DELINEATED HEREON. ASSESSOR'S PARCELS MAY NOT COMPLY WITH LOCAL LOT SPLIT OR BUILDING SITE ORDINANCES.