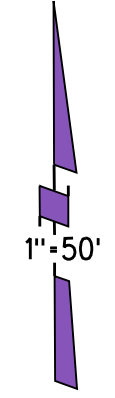
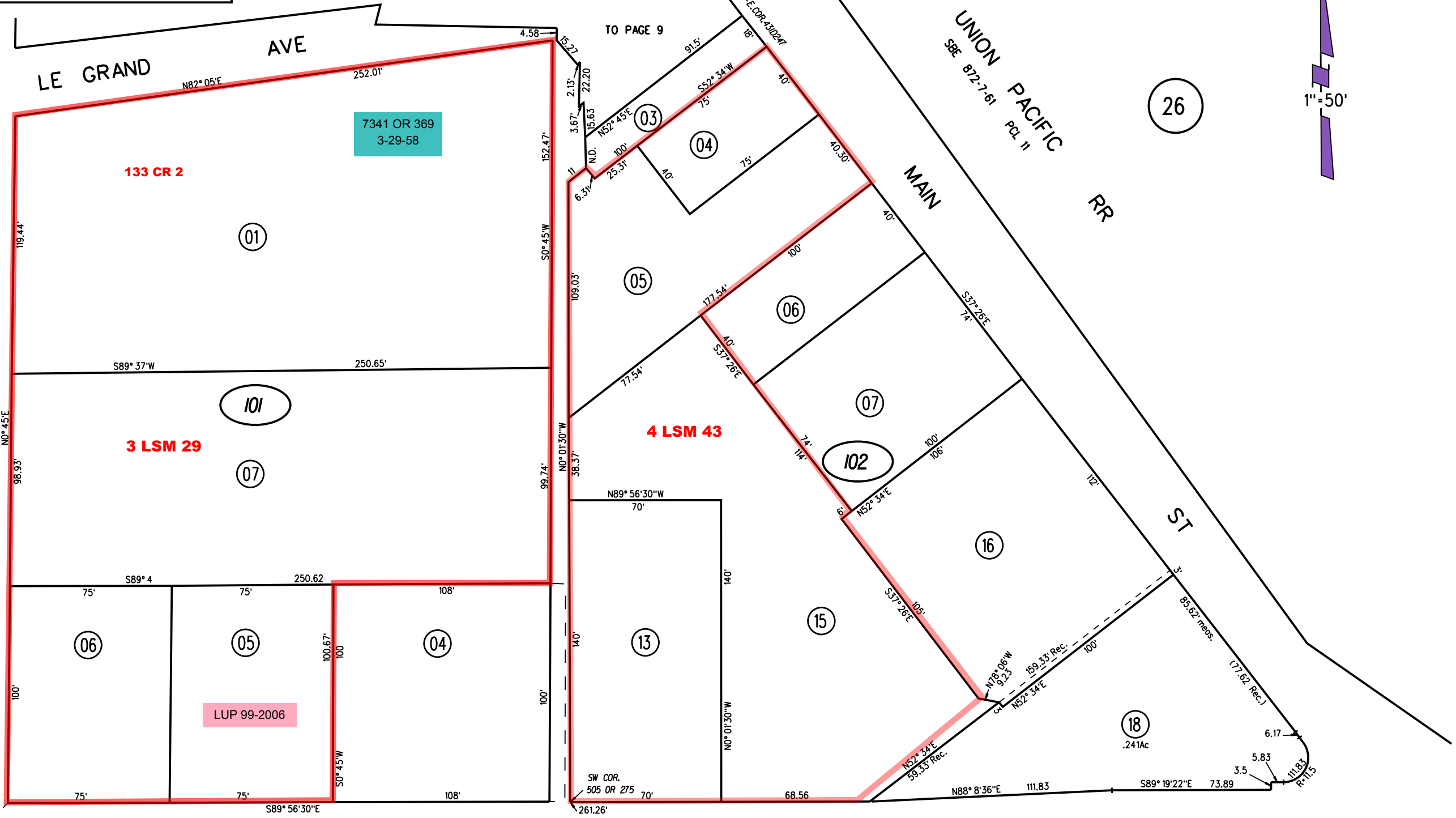


NOTE: THIS MAP WAS PREPARED FOR ASSESSMENT PURPOSES ONLY. NO LIABILITY IS ASSUMED FOR THE ACCURACY OF THE INFORMATION DELINEATED HEREON. ASSESSOR'S PARCELS MAY NOT COMPLY WITH LOCAL LOT SPLIT OR BUILDING SITE ORDINANCES.



HOLWAY (POINT OF TIMBER RD) DR



PB 3

4 3  
9 10

CAMINO DIABLO

11

101 102

1961 ROLL 116/32

ASSESSOR'S MAP

11/3/17 BOOK 2 PAGE 10

CONTRA COSTA COUNTY, CALIF.

AMS 10-21-99