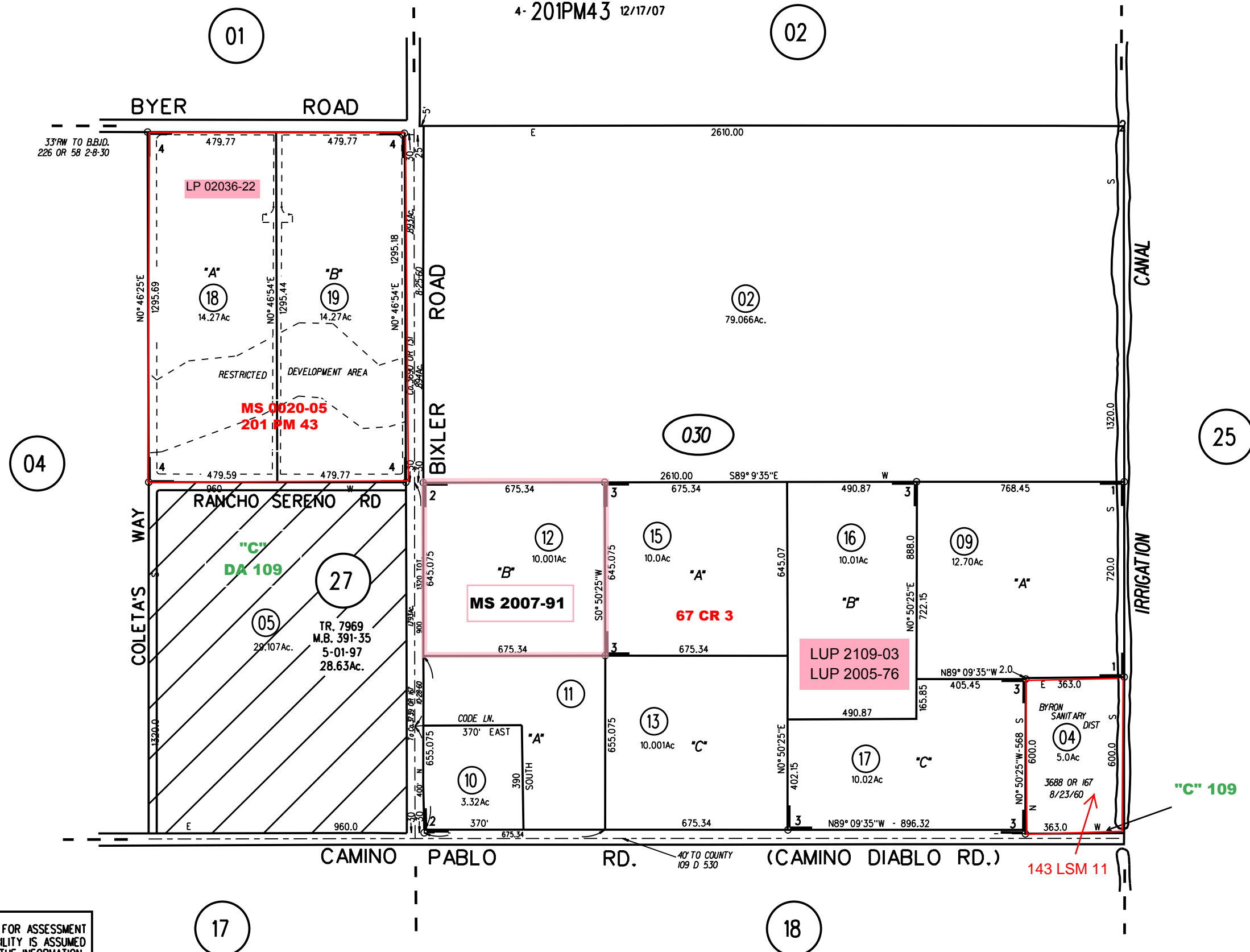
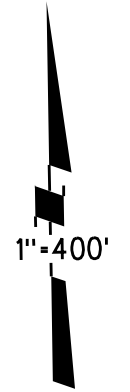


SW 1/4 SEC 2 & POR SE 1/4 SEC 3 T1S R3E MDB&M

- 1- 128PM9 6/5/87
- 2- 142PM15 9/15/89
- 3- 155PM36 11/19/91
- 4- 201PM43 12/17/07



NOTE: THIS MAP WAS PREPARED FOR ASSESSMENT PURPOSES ONLY. NO LIABILITY IS ASSUMED FOR THE ACCURACY OF THE INFORMATION DELINEATED HEREON. ASSESSOR'S PARCELS MAY NOT COMPLY WITH LOCAL LOT SPLIT OR BUILDING SITE ORDINANCES.

030 201 PM 43 6/2/08