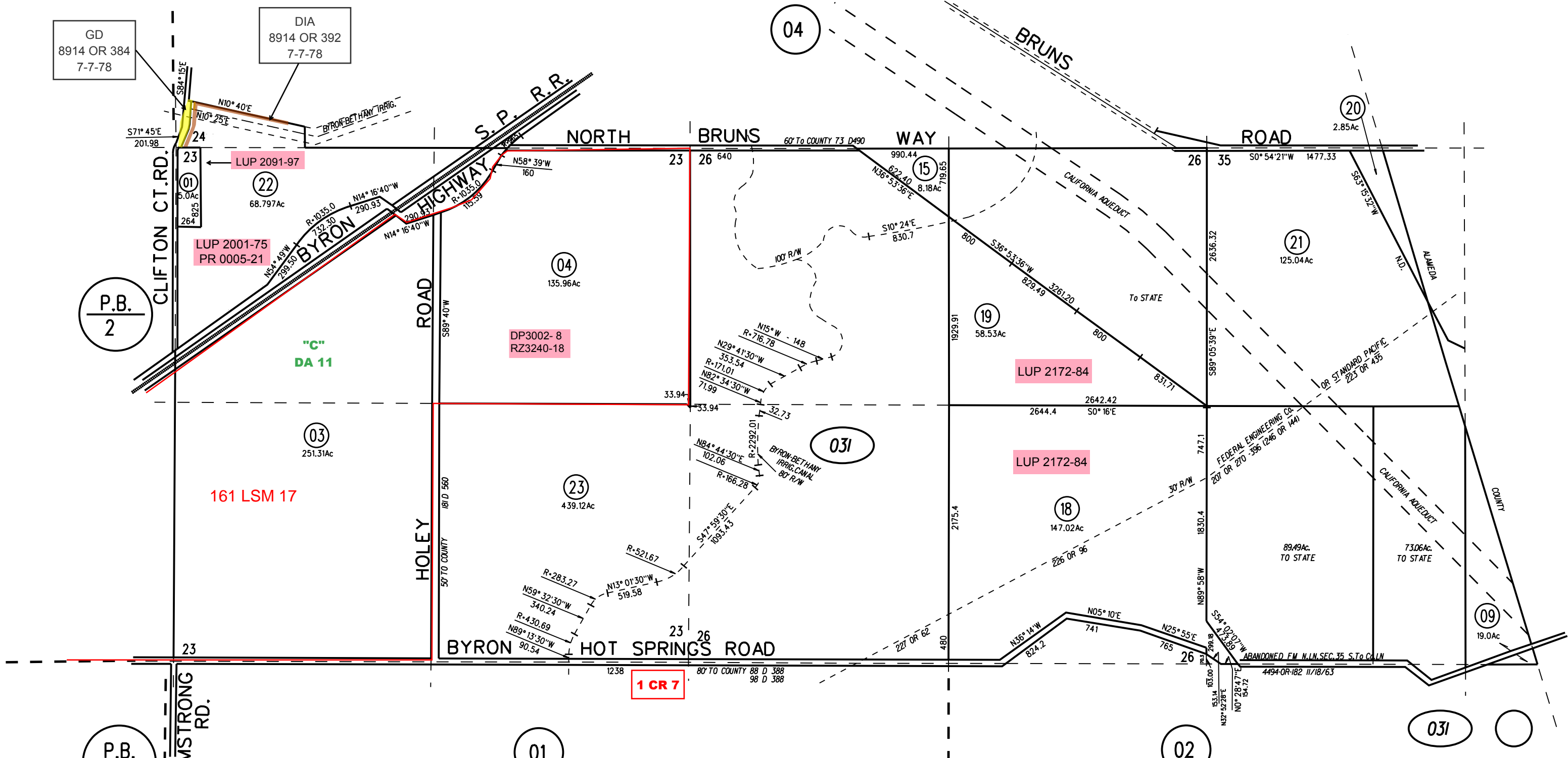
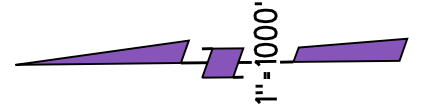


POR. SECS. 24 & 35 & ALL OF SECS. 23 & 26 T1S R3E M.D.B.&M.



GD  
8914 OR 384  
7-7-78

DIA  
8914 OR 392  
7-7-78

LUP 2091-97

LUP 2001-75  
PR 0005-21

DP3002-8  
RZ3240-18

LUP 2172-84

LUP 2172-84

NOTE: THIS MAP WAS PREPARED FOR ASSESSMENT PURPOSES ONLY. NO LIABILITY IS ASSUMED FOR THE ACCURACY OF THE INFORMATION DELINEATED HEREON. ASSESSOR'S PARCELS MAY NOT COMPLY WITH LOCAL LOT SPLIT OR BUILDING SITE ORDINANCES.

AMS 10-21-99

FM.119-32 To 36 5/10/63  
ASSESSOR'S MAP

BOOK 1 PAGE 3

CONTRA COSTA COUNTY, CALIF.