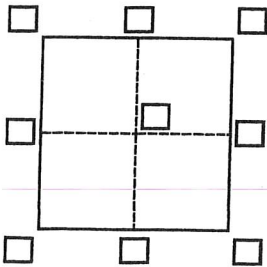


# CORNER RECORD

Agency Index 219 CE12  
 Document Number -10200  
 City of Danville County of Contra Costa, California  
 Brief Legal Description LOT 68 194 M1



### CORNER TYPE

- Government Corner  Control   
 Meander  Property   
 Rancho  Other

Date of Survey 6-22-20

### COORDINATES (Optional)

- N. \_\_\_\_\_ E. \_\_\_\_\_  
 Elevation \_\_\_\_\_  
 Units  Metric  U.S. Survey Foot   
 Horizontal Datum \_\_\_\_\_  
 Zone \_\_\_\_\_ Epoch Date \_\_\_\_\_  
 Vertical Datum \_\_\_\_\_  
 Complies with Public Resources Code §§8801-8819  
 Complies with Public Resources Code §§8890-8902

- PLS Act Ref.:  8765(d)  8771  8773  Other:  
 Corner/Monument:  Left as found  Established  Rebuilt  Pre-Construction  
 Found and tagged  Reestablished  Referenced  Post-Construction

Narrative of corner identified and monument as found, set, reset, replaced, or removed:  
 See sheet #2 for description(s):

### SURVEYOR'S STATEMENT

This Corner Record was prepared by me or under my direction in conformance with  
 the Professional Land Surveyors' Act on July 3 2020  
 Signed Matthew Chapman P.L.S. or R.C.E. No. 7054



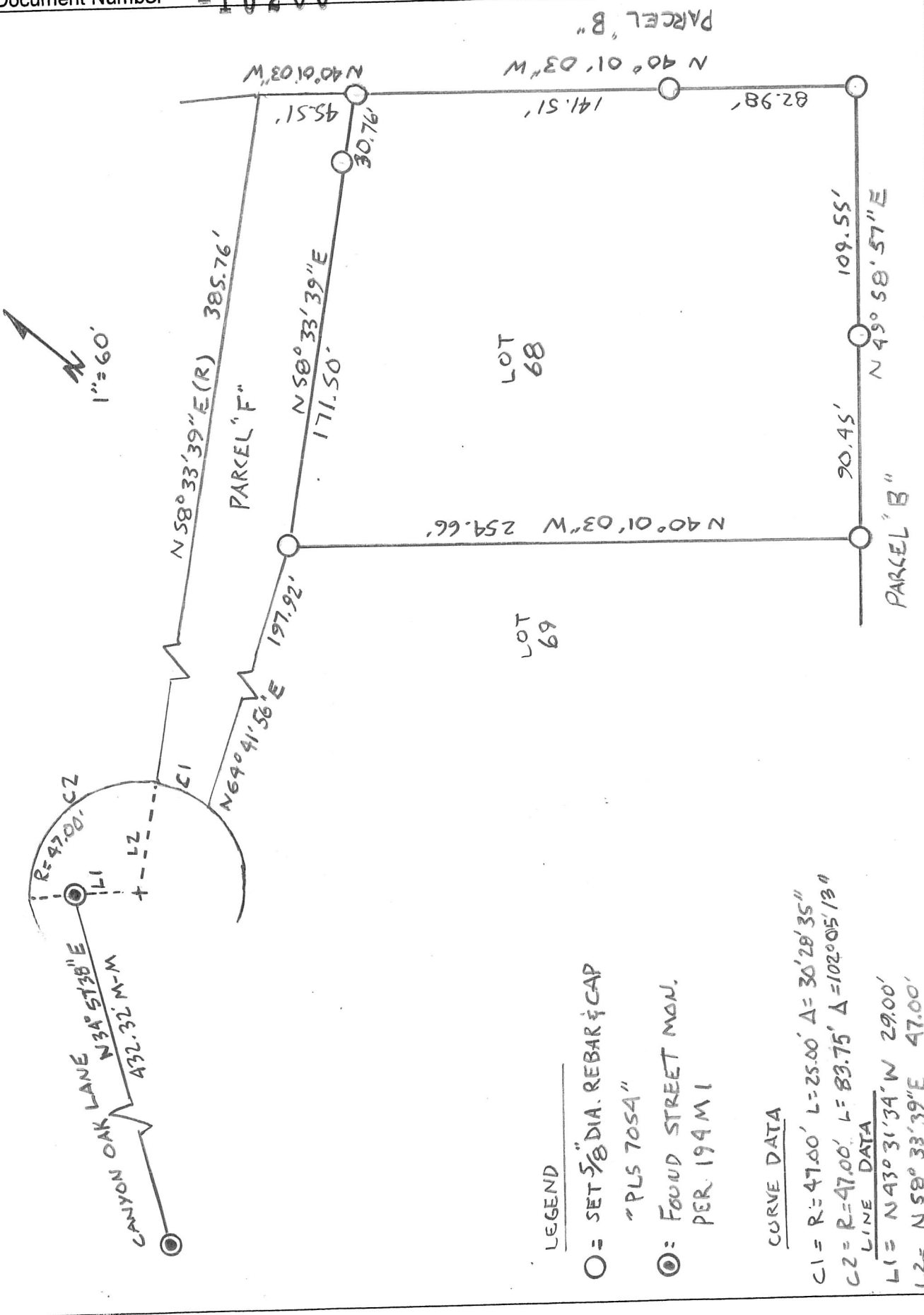
### COUNTY SURVEYOR'S STATEMENT

This Corner Record was received July 14<sup>th</sup> 2020  
 and examined and filed July 23<sup>rd</sup> 2020  
 Signed James A. Stein P.L.S. or R.C.E. No. 6571  
 Title County Surveyor



County Surveyor's Comment

APN # 203-290-012



LEGEND

- = SET 5/8" DIA. REBAR & CAP
- " PLS 7054"
- ⊙ = FOUND STREET MON. PER. 194 M I

CURVE DATA

C1 = R=47.00' L=25.00' Δ=30'28'35"  
 C2 = R=47.00' L=83.75' Δ=102°05'13"  
LINE DATA  
 LI = N43°31'34" W 29.00'  
 L2 = N58°33'39" E 47.00'