

CORNER RECORD

Agency Index 213 02 42
Document Number -10136

City of LAFAYETTE County of CONTRA COSTA, California
Brief Legal Description LOT 7 - (128 m 19)



CORNER TYPE

Government Corner Control
Meander Property
Rancho Other

Date of Survey 4-1-20

COORDINATES (Optional)

N. _____ E. _____

Elevation _____

Units Metric U.S. Survey Foot

Horizontal Datum _____

Zone _____ Epoch Date _____

Vertical Datum _____

Complies with Public Resources Code §§8801-8819

Complies with Public Resources Code §§8890-8902

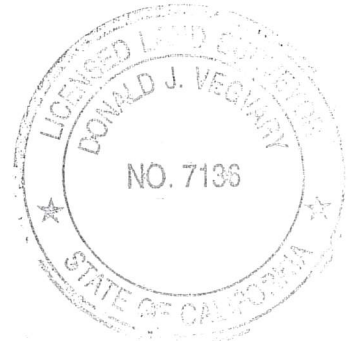
PLS Act Ref.: 8765(d) 8771 8773 Other:

Corner/Monument: Left as found Established Rebuilt Pre-Construction

Found and tagged Reestablished Referenced Post-Construction

Narrative of corner identified and monument as found, set, reset, replaced, or removed:

See sheet #2 for description(s):



SURVEYOR'S STATEMENT

This Corner Record was prepared by me or under my direction in conformance with

the Professional Land Surveyors' Act on 4-3-20

Signed [Signature] P.L.S. or R.C.E. No. 7136

COUNTY SURVEYOR'S STATEMENT

This Corner Record was received April 7th 2020

and examined and filed April 16th 2020

Signed [Signature] P.L.S. or R.C.E. No. 6571

Title County Surveyor

County Surveyor's Comment

A.P.N. 233-120-106



CORNER RECORD

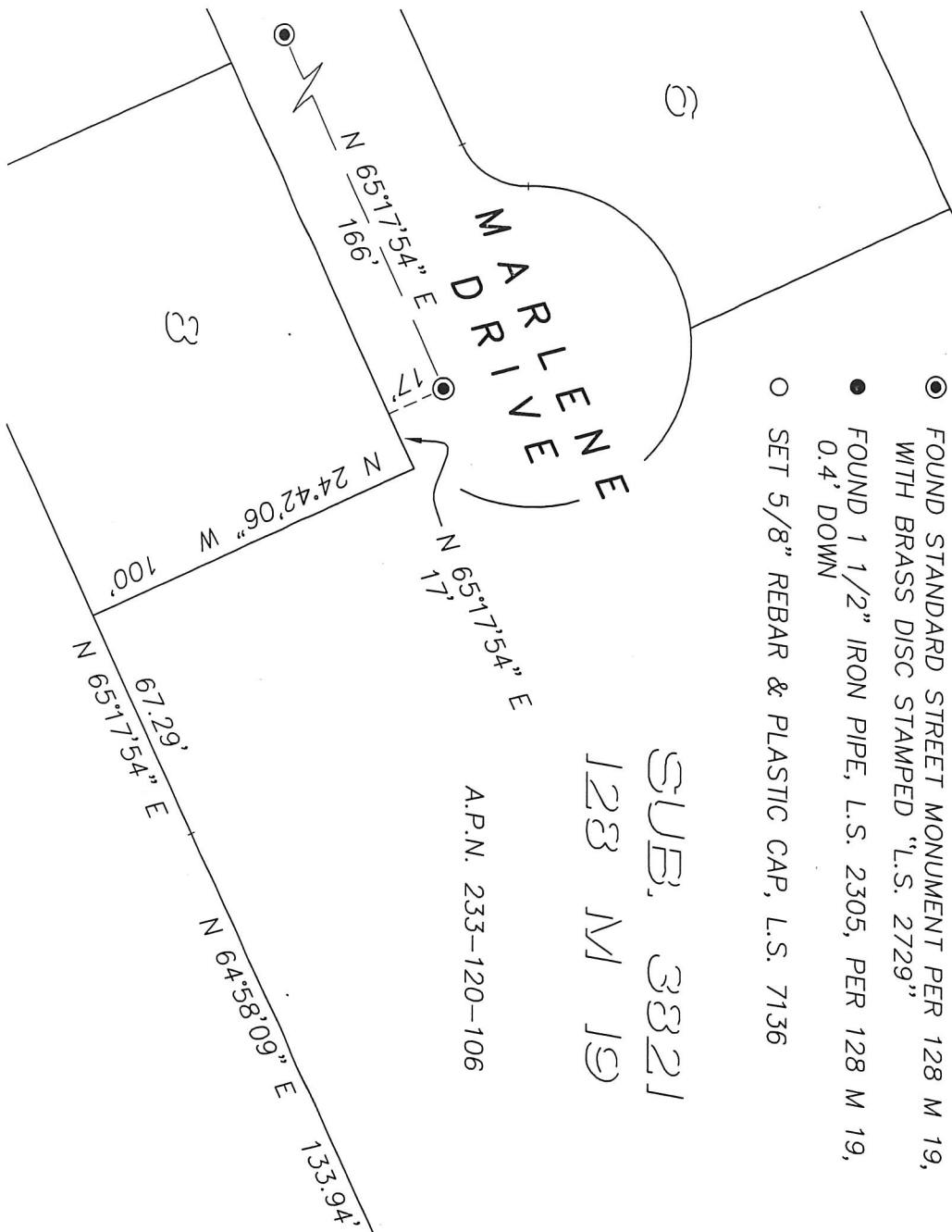
LOT 7 - "SUB. 3821" - (128 M 19)

SURVEY DATE: APRIL 1, 2020

DONALD VEGVARY
 LAND SURVEYOR
 3527 MT. DIABLO BLVD., #368
 LAFAYETTE, CA 94549
 (925) 947-1051

LEGEND

- FOUND STANDARD STREET MONUMENT PER 128 M 19, WITH BRASS DISC STAMPED "L.S. 2729"
- FOUND 1 1/2" IRON PIPE, L.S. 2305, PER 128 M 19, 0.4' DOWN
- SET 5/8" REBAR & PLASTIC CAP, L.S. 7136



SUB. 3821
128 M 19

A.P.N. 233-120-106

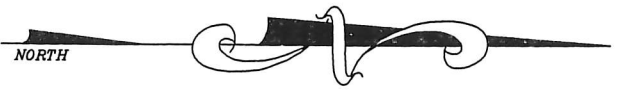
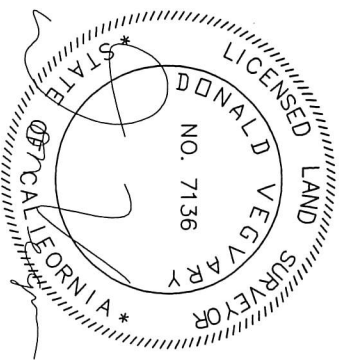
N 87°45'16" W 99.16'



BASE OF FALLEN 30" DIAMETER LIVE OAK TREE IS 9' SOUTH OF LINE

A.P.N. 233-140-016

SCALE: 1"=50'



SUB. 6321
293 M 18