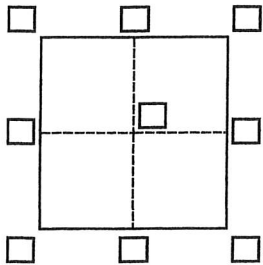


# CORNER RECORD

Agency Index 212 0248  
Document Number -9901-

City of OAKLEY County of CONTRA COSTA, California  
Brief Legal Description LOT 57 267 M 50



### CORNER TYPE

Government Corner  Control  
Meander  Property  
Rancho  Other

Date of Survey 1-4-20

### COORDINATES (Optional)

N. \_\_\_\_\_ E. \_\_\_\_\_  
Elevation \_\_\_\_\_  
Units  Metric  U.S. Survey Foot   
Horizontal Datum \_\_\_\_\_  
Zone \_\_\_\_\_ Epoch Date \_\_\_\_\_  
Vertical Datum \_\_\_\_\_  
 Complies with Public Resources Code §§8801-8819  
 Complies with Public Resources Code §§8890-8902

PLS Act Ref.:  8765(d)  8771  8773  Other:

Corner/Monument:  Left as found  Established  Rebuilt  Pre-Construction  
 Found and tagged  Reestablished  Referenced  Post-Construction

Narrative of corner identified and monument as found, set, reset, replaced, or removed:  
 See sheet #2 for description(s):

### SURVEYOR'S STATEMENT

This Corner Record was prepared by me or under my direction in conformance with the Professional Land Surveyors' Act on 1-20-20.  
Signed Matthew Chapman P.L.S. or R.C.E. No. 7054



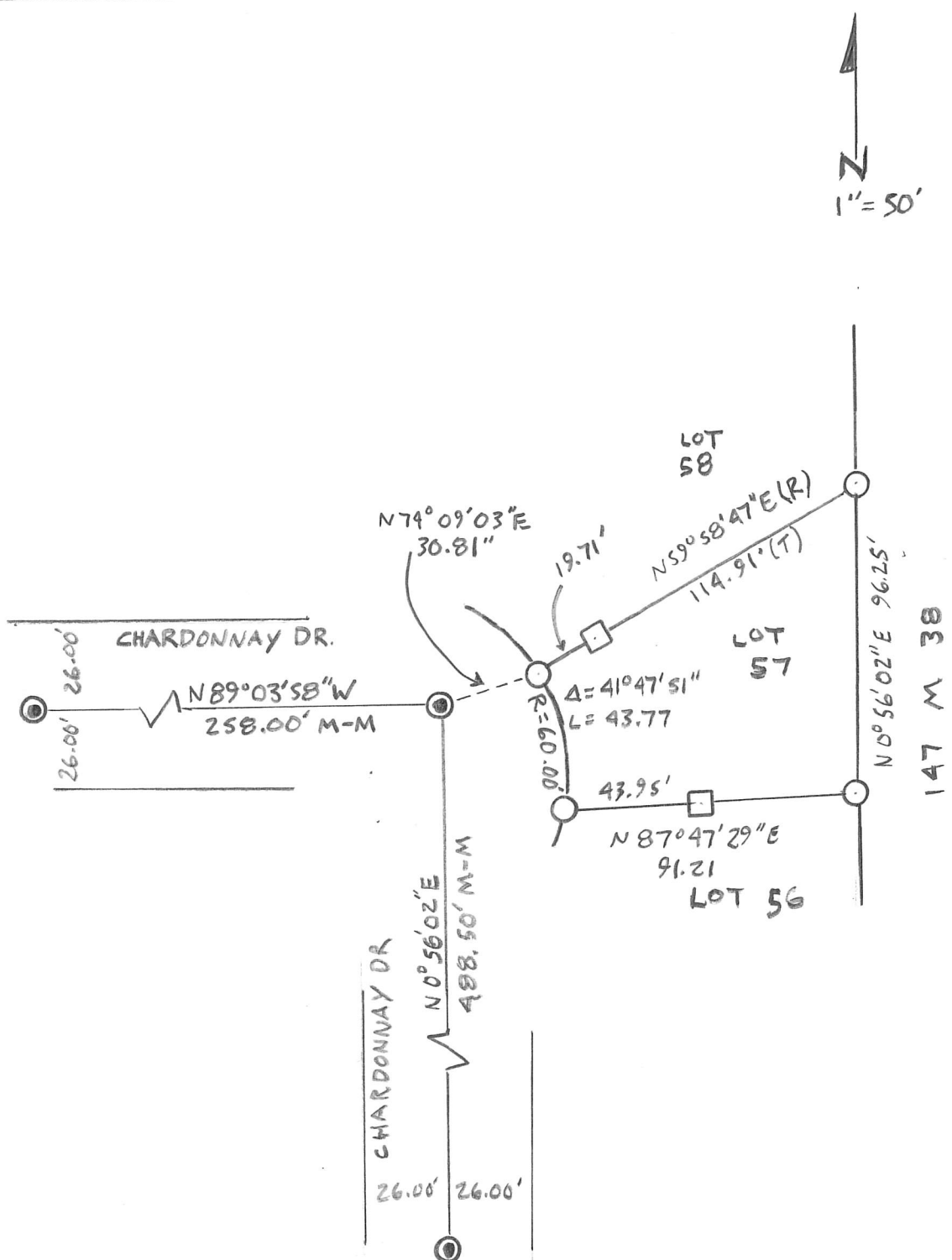
Matthew Chapman

### COUNTY SURVEYOR'S STATEMENT

This Corner Record was received February 3<sup>rd</sup> 2020  
and examined and filed February 27<sup>th</sup> 2020.  
Signed James A. Stein P.L.S. or R.C.E. No. 6571  
Title County Surveyor  
County Surveyor's Comment \_\_\_\_\_



APN # 035-465-008



LEGEND

- ⊙ = FOUND STREET MONUMENT  
267 M 50
- = SET 5/8" DIA. REBAR & CAP  
"PLS 7054"
- = SET BRASS TAG & NAIL "PLS 7054"