

CORNER RECORD

Agency Index 208 CR 47

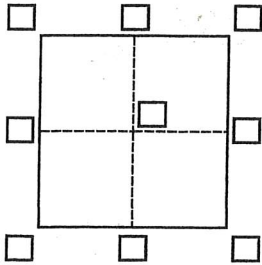
Document Number -9811-

City of Martinez

County of Contra Costa

, California

Brief Legal Description Portion of lots 6 & 7 15M 305 SHOWN ON 84 LSM 20



CORNER TYPE

- Government Corner Control
 Meander Property
 Rancho Other

Date of Survey 10-30-19

COORDINATES (Optional)

- N. _____ E. _____
 Elevation _____
 Units Metric U.S. Survey Foot
 Horizontal Datum _____
 Zone _____ Epoch Date _____
 Vertical Datum _____
 Complies with Public Resources Code §§8801-8819
 Complies with Public Resources Code §§8890-8902

PLS Act Ref.:

- 8765(d) 8771 8773 Other:

Corner/
Monument:

- Left as found Established Rebuilt Pre-Construction
 Found and tagged Reestablished Referenced Post-Construction

Narrative of corner identified and monument as found, set, reset, replaced, or removed:

See sheet #2 for description(s):

SURVEYOR'S STATEMENT

This Corner Record was prepared by me or under my direction in conformance with

the Professional Land Surveyors' Act on 11-20-19

Signed Matthew Chapman P.L.S. or R.C.E. No. 7054



COUNTY SURVEYOR'S STATEMENT

This Corner Record was received November 25th 2019

and examined and filed December 12th 2019.

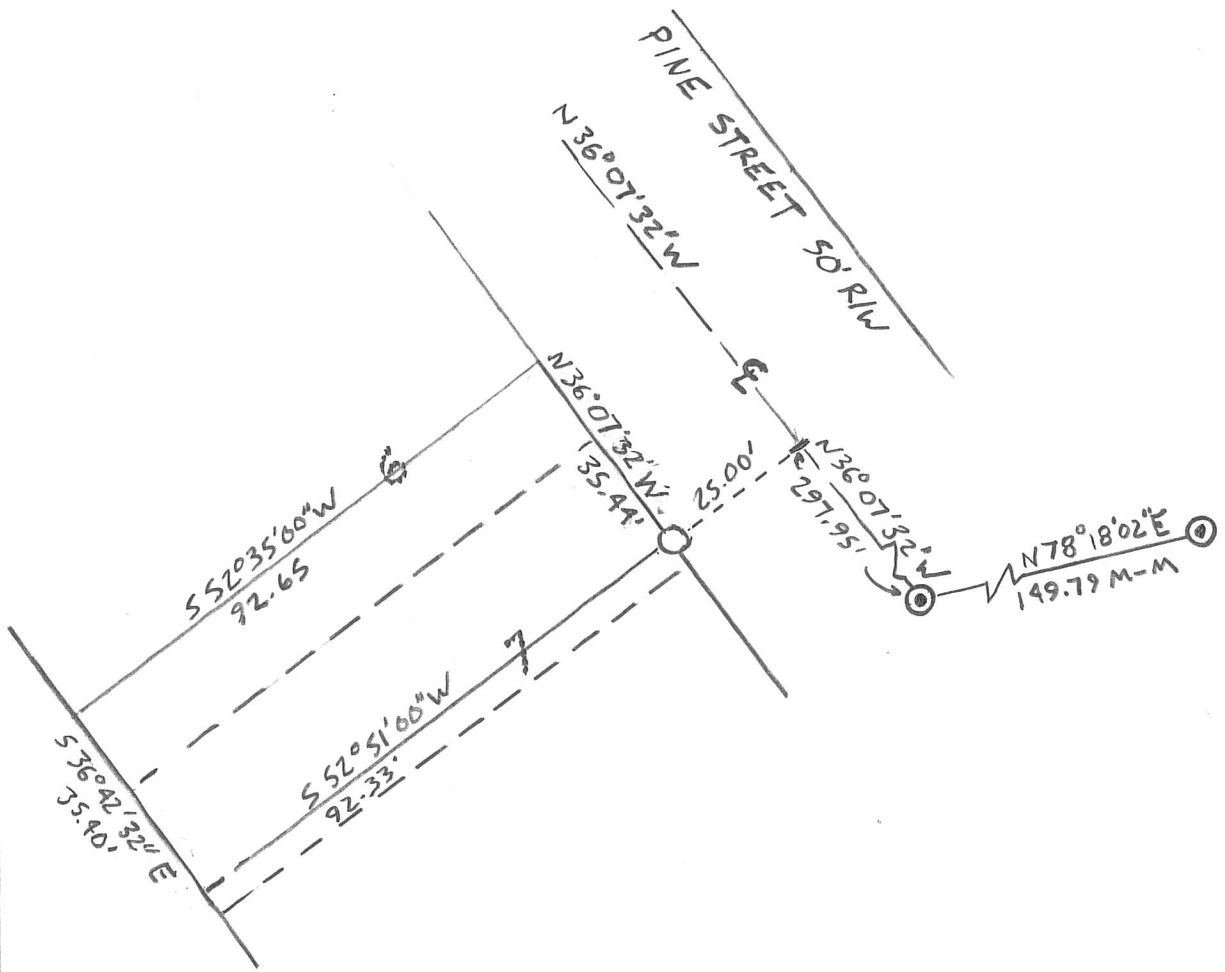
Signed James A. Stein P.L.S. or R.C.E. No. 6571

Title County Surveyor

County Surveyor's Comment



374-073-008



LEGEND

⊙ = FOUND STD. COUNTY WELL MONUMENT
118 LSM 46

○ = SET BRASS TAG IN CONCRETE
" PLS 705A "

