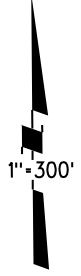
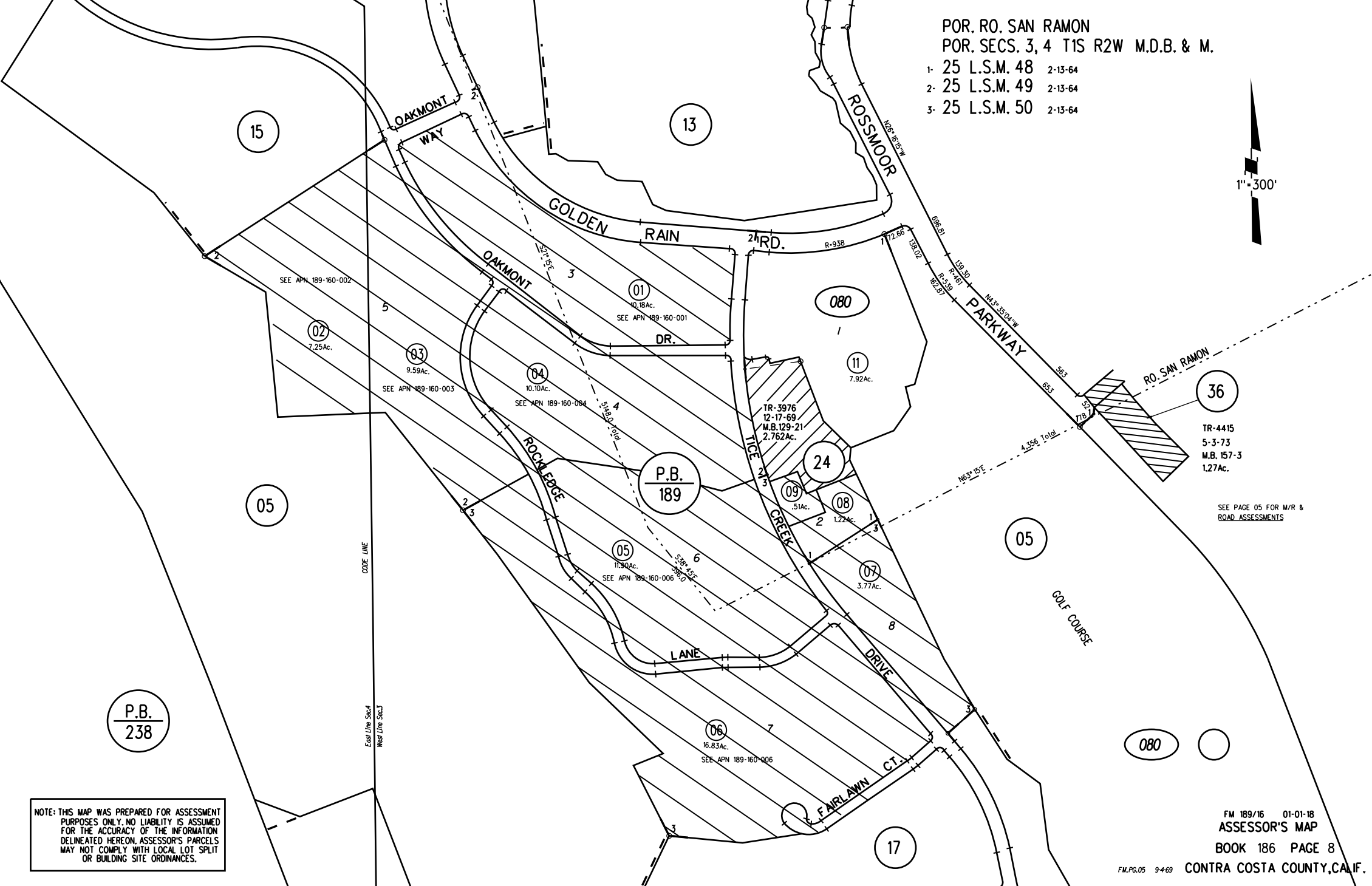


POR. RO. SAN RAMON  
 POR. SECS. 3, 4 T1S R2W M.D.B. & M.

- 1- 25 L.S.M. 48 2-13-64
- 2- 25 L.S.M. 49 2-13-64
- 3- 25 L.S.M. 50 2-13-64



1"=300'



SEE APN 189-160-002

02  
7.25Ac.

03  
9.59Ac.

SEE APN 189-160-003

04  
10.10Ac.

SEE APN 189-160-084

01  
10.18Ac.

SEE APN 189-160-001

P.B.  
189

05  
11.90Ac.

SEE APN 189-160-006

TR-3976  
12-17-69  
M.B. 129-21  
2.762Ac.

09  
.51Ac.

08  
1.22Ac.

07  
3.77Ac.

06  
16.83Ac.

SEE APN 189-160-006

36

TR-4415  
5-3-73  
M.B. 157-3  
1.27Ac.

SEE PAGE 05 FOR M/R &  
ROAD ASSESSMENTS

P.B.  
238

NOTE: THIS MAP WAS PREPARED FOR ASSESSMENT PURPOSES ONLY. NO LIABILITY IS ASSUMED FOR THE ACCURACY OF THE INFORMATION DELINEATED HEREON. ASSESSOR'S PARCELS MAY NOT COMPLY WITH LOCAL LOT SPLIT OR BUILDING SITE ORDINANCES.

080

17

FM 189/16 01-01-18  
ASSESSOR'S MAP

BOOK 186 PAGE 8