

RO SAN RAMON

1- 27LSM46 5/20/1964

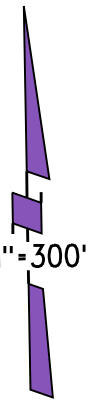
2- 166PM12 2/23/1995

B-1989 ROLL- TRACT 7159 MB 328-17 12/12/1988

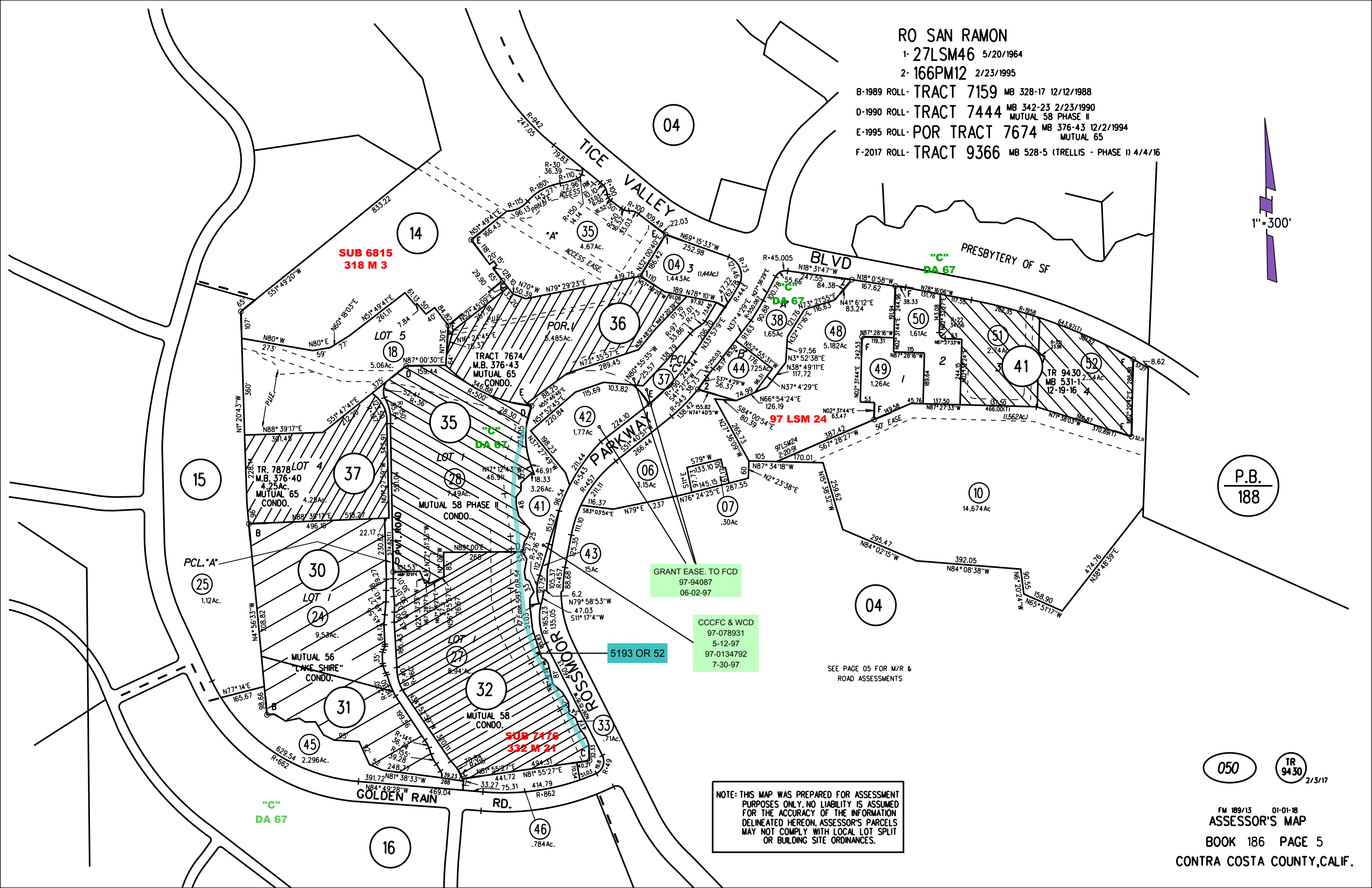
D-1990 ROLL- TRACT 7444 MB 342-23 2/23/1990

E-1995 ROLL- POR TRACT 7674 MB 376-43 12/2/1994  
MUTUAL 58 PHASE II  
MUTUAL 65

F-2017 ROLL- TRACT 9366 MB 528-5 (TRELLIS - PHASE I) 4/4/16



1" = 300'



P.B. 188

050

TR 9430 2/3/17

NOTE: THIS MAP WAS PREPARED FOR ASSESSMENT PURPOSES ONLY. NO LIABILITY IS ASSUMED FOR THE ACCURACY OF THE INFORMATION DELINEATED HEREON. ASSESSOR'S PARCELS MAY NOT COMPLY WITH LOCAL LOT SPLIT OR BUILDING SITE ORDINANCES.

SEE PAGE 05 FOR M/R & ROAD ASSESSMENTS

GRANT EASE TO FCD  
97-94087  
06-02-97

CCCFC & WCD  
97-078931  
5-12-97  
97-0134792  
7-30-97