

B-1995 ROLL- POR TRACT 7745 M.B. 377-10 (OAK HILLS SOUTH UNIT 1)

C-1995 ROLL- PCL A TRACT 7843 M.B. 380-33 (OAK HILLS SOUTH UNIT 2)

D-1995 ROLL- POR TRACT 7928 M.B. 381-8 (OAK HILLS SOUTH UNIT 3)

E-1999 ROLL- PCLS. A,B,&C TRACT 7946 M.B. 405-15 (OAK HILLS SOUTH UNIT 4)

F-2002 ROLL- PCL, A TRACT 8042 M.B. 431-13 (OAK HILLS SOUTH UNIT 5)

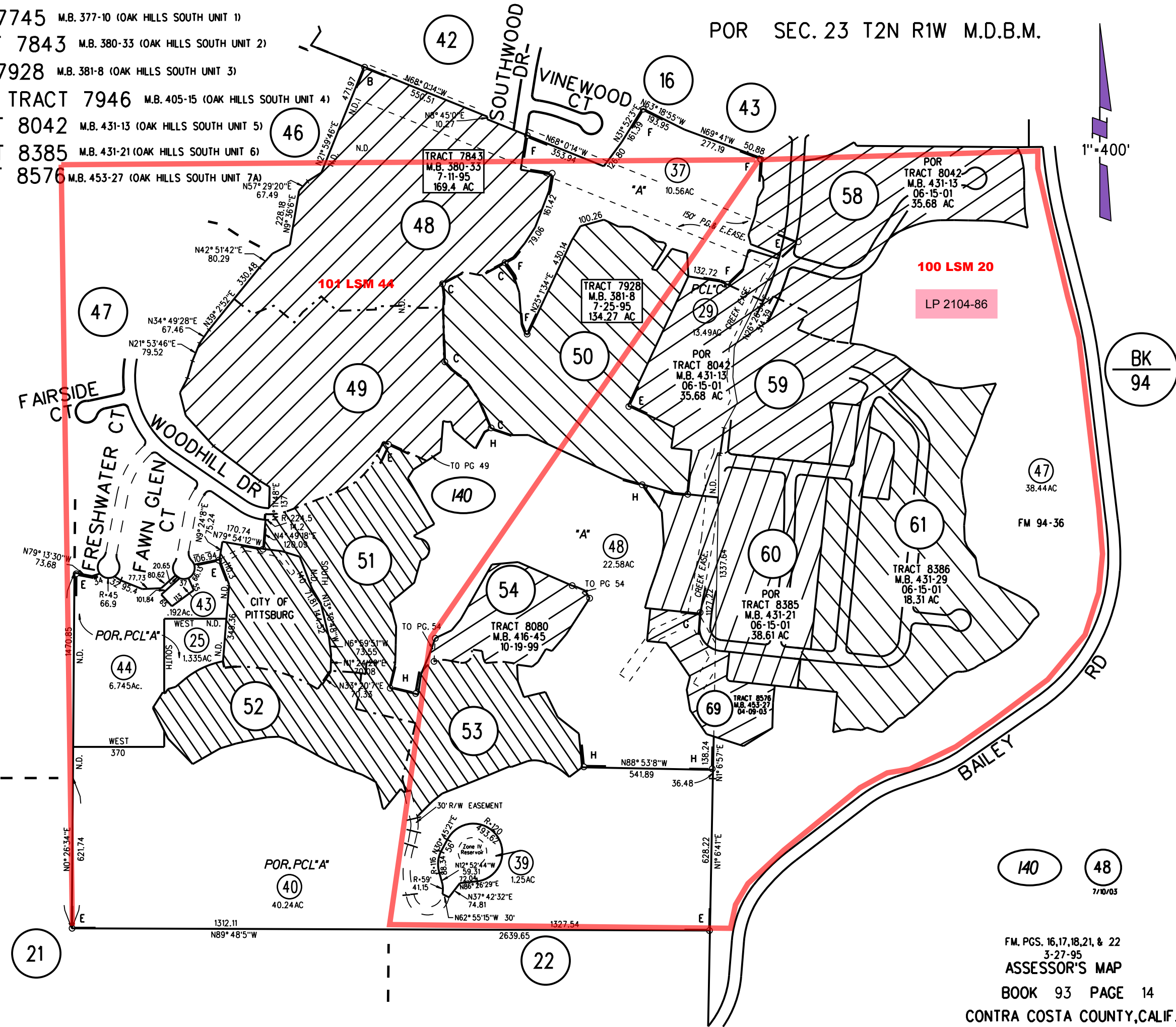
G-2002 ROLL- PCL, A TRACT 8385 M.B. 431-21 (OAK HILLS SOUTH UNIT 6)

H-2004 ROLL- PCL, A TRACT 8576 M.B. 453-27 (OAK HILLS SOUTH UNIT 7A)

POR SEC. 23 T2N R1W M.D.B.M.

CERT. OF CORR.
(CHANGE IN
COURSE)
2002-0031428
1-30-02

1"=400'



100 LSM 20

LP 2104-86

BK
94

18

NOTE: THIS MAP WAS PREPARED FOR ASSESSMENT PURPOSES ONLY. NO LIABILITY IS ASSUMED FOR THE ACCURACY OF THE INFORMATION DELINEATED HEREON. ASSESSOR'S PARCELS MAY NOT COMPLY WITH LOCAL LOT SPLIT OR BUILDING SITE ORDINANCES.

FM. PGS. 16,17,18,21, & 22
3-27-95

ASSESSOR'S MAP

BOOK 93 PAGE 14

CONTRA COSTA COUNTY, CALIF.