

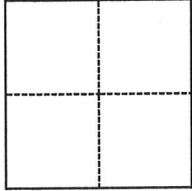
CORNER RECORD

Agency Index 197 CE 41
Document Number 8043

City of CONCORD County of CONTRA COSTA, California
Brief Legal Description PARCEL "B" OF (187 PM 9)

CORNER TYPE

COORDINATES (Optional)



- Government Corner
- Meander
- Rancho
- Control
- Property
- Other

Date of Survey December 14, 20¹⁷

N. _____ E. _____
 Elevation _____
 Units Metric U.S. Survey Foot
 Horizontal Datum _____
 Zone _____ Epoch Date _____
 Vertical Datum _____
 Complies with Public Resources Code §§8801-8819
 Complies with Public Resources Code §§8890-8902

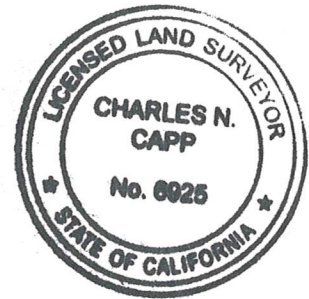
PLS Act Ref.: 8765(d) 8771 8773 Other:
 Corner/Monument: Left as found Established Rebuilt Pre-Construction
 Found and tagged Reestablished Referenced Post-Construction

Narrative of corner identified and monument as found, set, reset, replaced, or removed:
 See sheet #2 for description(s):

FOUND MONUMENTS AS NOTED PER (133 LSM 43) AND (187 PM 10). SET AS NOTED ON SKETCH AT THE NORTHEAST CORNER OF SAID PARCEL "B".

SURVEYOR'S STATEMENT

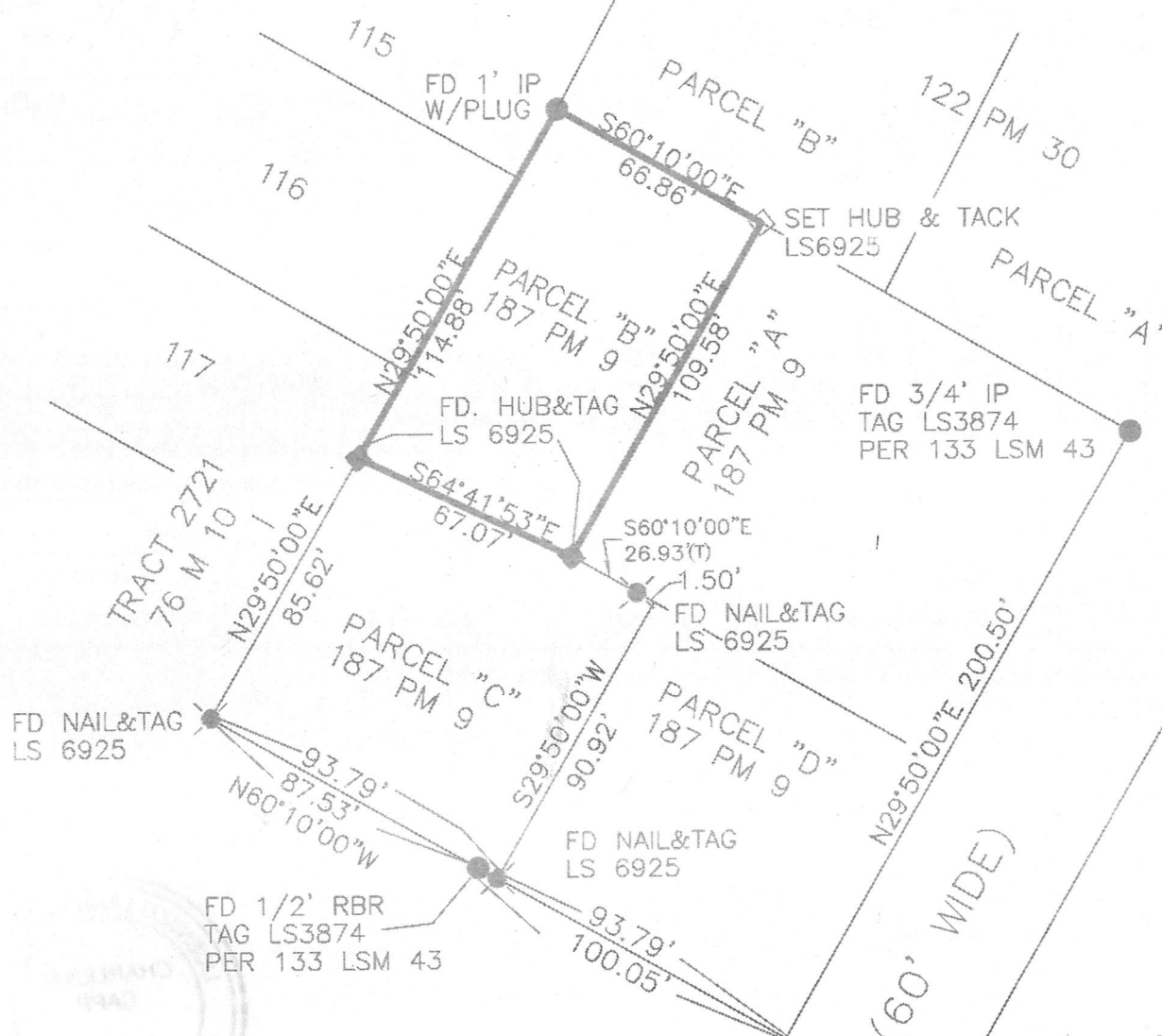
This Corner Record was prepared by me or under my direction in conformance with
 the Professional Land Surveyors' Act on November 17, 2017
 Signed [Signature] P.L.S. or R.C.E. No. LS 6925



COUNTY SURVEYOR'S STATEMENT

This Corner Record was received November 21st 2017
 and examined and filed June 11th 2019
 Signed [Signature] P.L.S. or R.C.E. No. 6571
 Title County Surveyor
 County Surveyor's Comment _____





LEGEND

- FOUND MONUMENT AS NOTED
- FD HUB & TACK. TAGGED LS6925
- SET HUB & TACK. TAGGED LS6925
- ⊗ FD NAIL TAGGED LS6925
- T TOTAL



NOTE: ALL BEARINGS AND DISTANCES SHOWN ARE RECORD PER (133 LSM 43 & 187 PM 10)

APN: 110-451-014-2