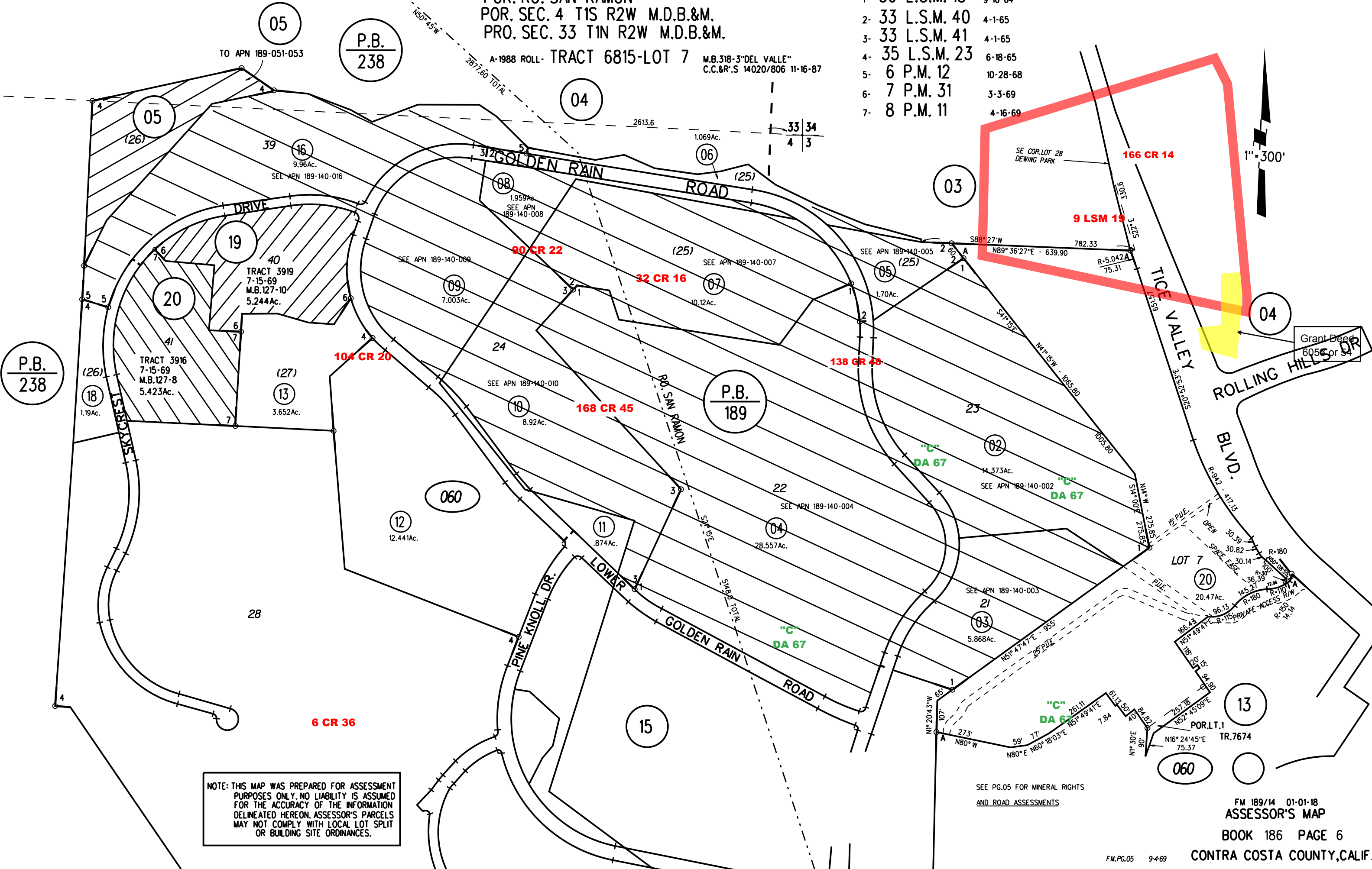


POR. RO. SAN RAMON  
 POR. SEC. 4 T1S R2W M.D.B.&M.  
 PRO. SEC. 33 T1N R2W M.D.B.&M.

A-1988 ROLL - TRACT 6815-LOT 7 M.B. 318-3 "DEL VALLE"  
 C.C.&R.'S 14020/806 11-16-87

- |                 |          |
|-----------------|----------|
| 1- 30 L.S.M. 18 | 9-10-64  |
| 2- 33 L.S.M. 40 | 4-1-65   |
| 3- 33 L.S.M. 41 | 4-1-65   |
| 4- 35 L.S.M. 23 | 6-18-65  |
| 5- 6 P.M. 12    | 10-28-68 |
| 6- 7 P.M. 31    | 3-3-69   |
| 7- 8 P.M. 11    | 4-16-69  |



P.B.  
238

P.B.  
238

P.B.  
189

NOTE: THIS MAP WAS PREPARED FOR ASSESSMENT PURPOSES ONLY. NO LIABILITY IS ASSUMED FOR THE ACCURACY OF THE INFORMATION DELINEATED HEREON. ASSESSOR'S PARCELS MAY NOT COMPLY WITH LOCAL LOT SPLIT OR BUILDING SITE ORDINANCES.

SEE PG.05 FOR MINERAL RIGHTS AND ROAD ASSESSMENTS

FM.PG.05 9-4-69