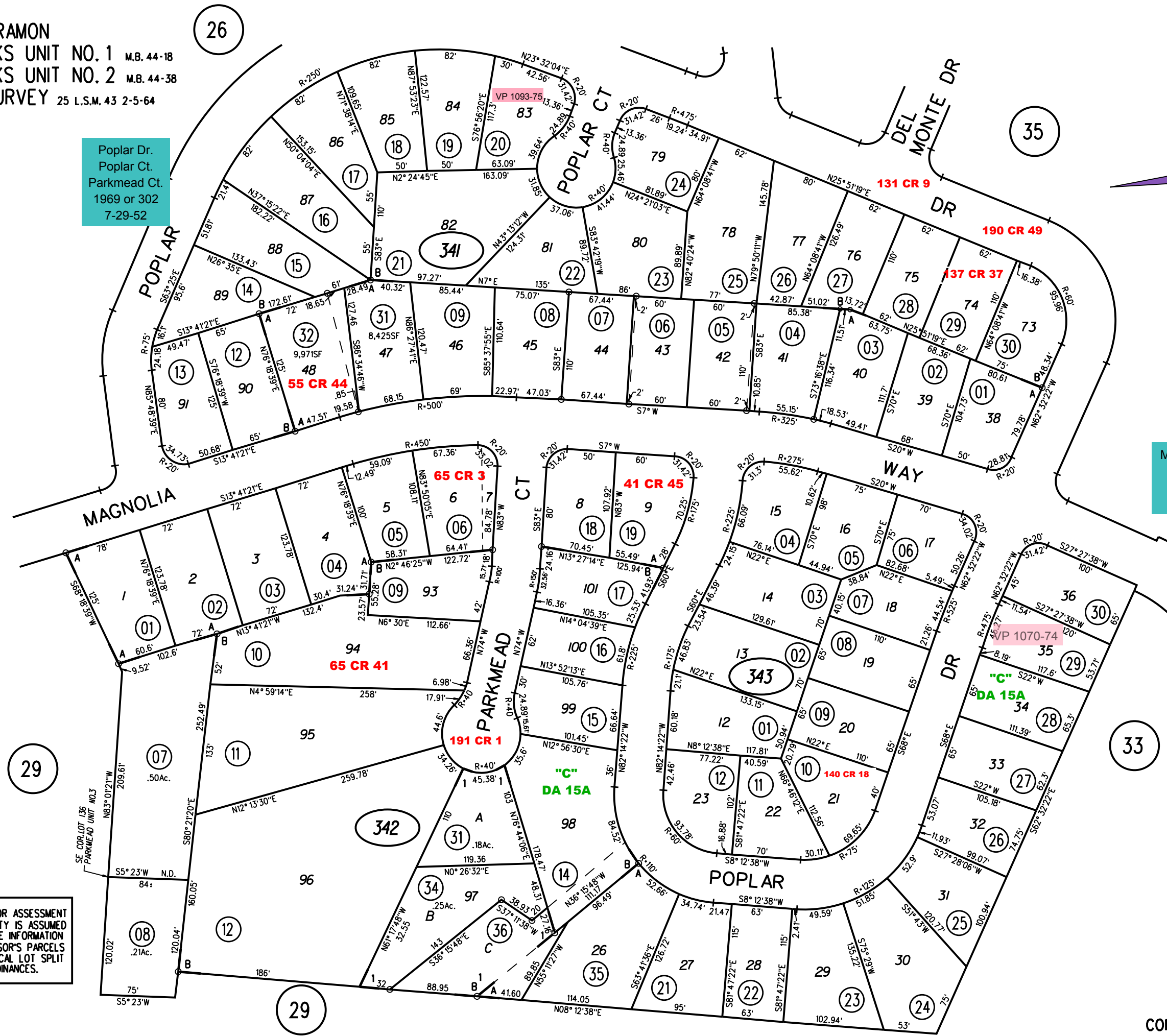
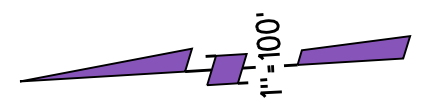


RANCHO SAN RAMON
 A- PARKMEAD OAKS UNIT NO. 1 M.B. 44-18
 B- PARKMEAD OAKS UNIT NO. 2 M.B. 44-38
 1- RECORD OF SURVEY 25 L.S.M. 43 2-5-64

Poplar Dr.
 Poplar Ct.
 Parkmead Ct.
 1969 or 302
 7-29-52



Magnolia Way
 Poplar Dr.
 1864 or 216
 12-12-51

NOTE: THIS MAP WAS PREPARED FOR ASSESSMENT PURPOSES ONLY. NO LIABILITY IS ASSUMED FOR THE ACCURACY OF THE INFORMATION DELINEATED HEREON. ASSESSOR'S PARCELS MAY NOT COMPLY WITH LOCAL LOT SPLIT OR BUILDING SITE ORDINANCES.

