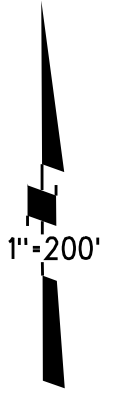
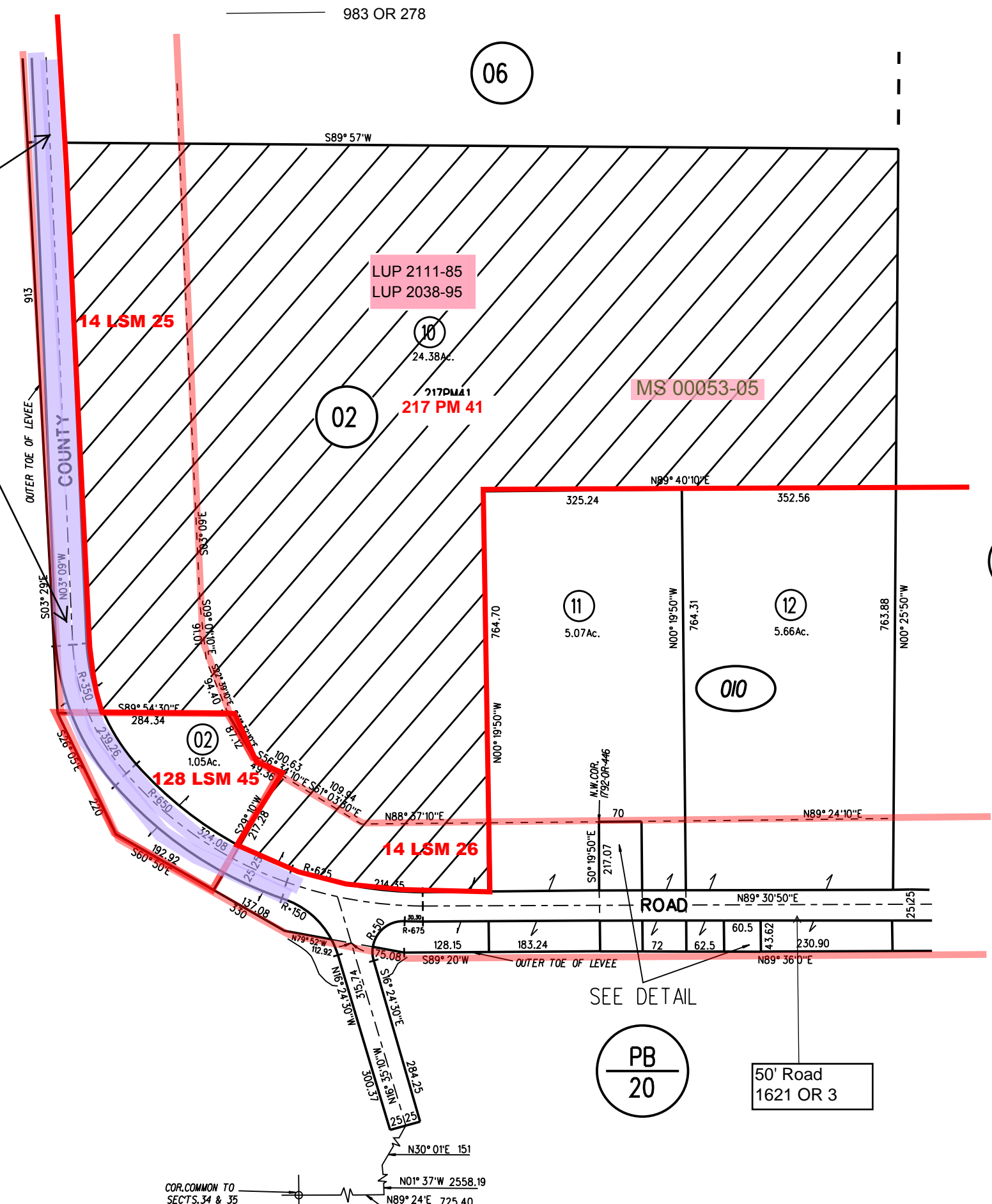


983 OR 278

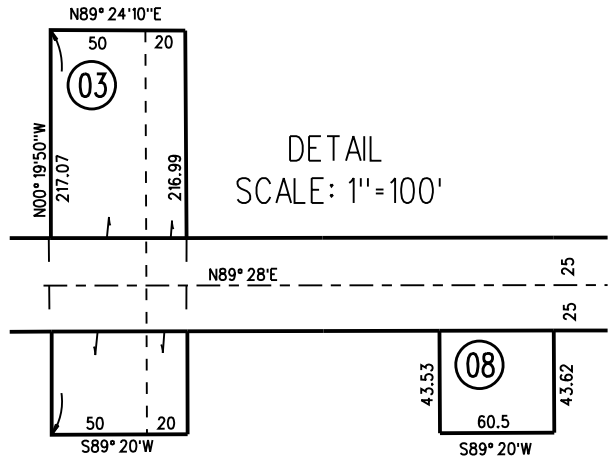


Vacated 5/18/1993  
93-129493  
See B-9273-86

PB  
20



03



PB  
20

50' Road  
1621 OR 3

010  
217  
PM41  
8/20/21

NOTE: THIS MAP WAS PREPARED FOR ASSESSMENT PURPOSES ONLY. NO LIABILITY IS ASSUMED FOR THE ACCURACY OF THE INFORMATION DELINEATED HEREON. ASSESSOR'S PARCELS MAY NOT COMPLY WITH LOCAL LOT SPLIT OR BUILDING SITE ORDINANCES.

COR. COMMON TO  
SECTS. 34 & 35  
N30° 01' E 151  
N01° 37' W 2558.19  
N89° 24' E 725.40