

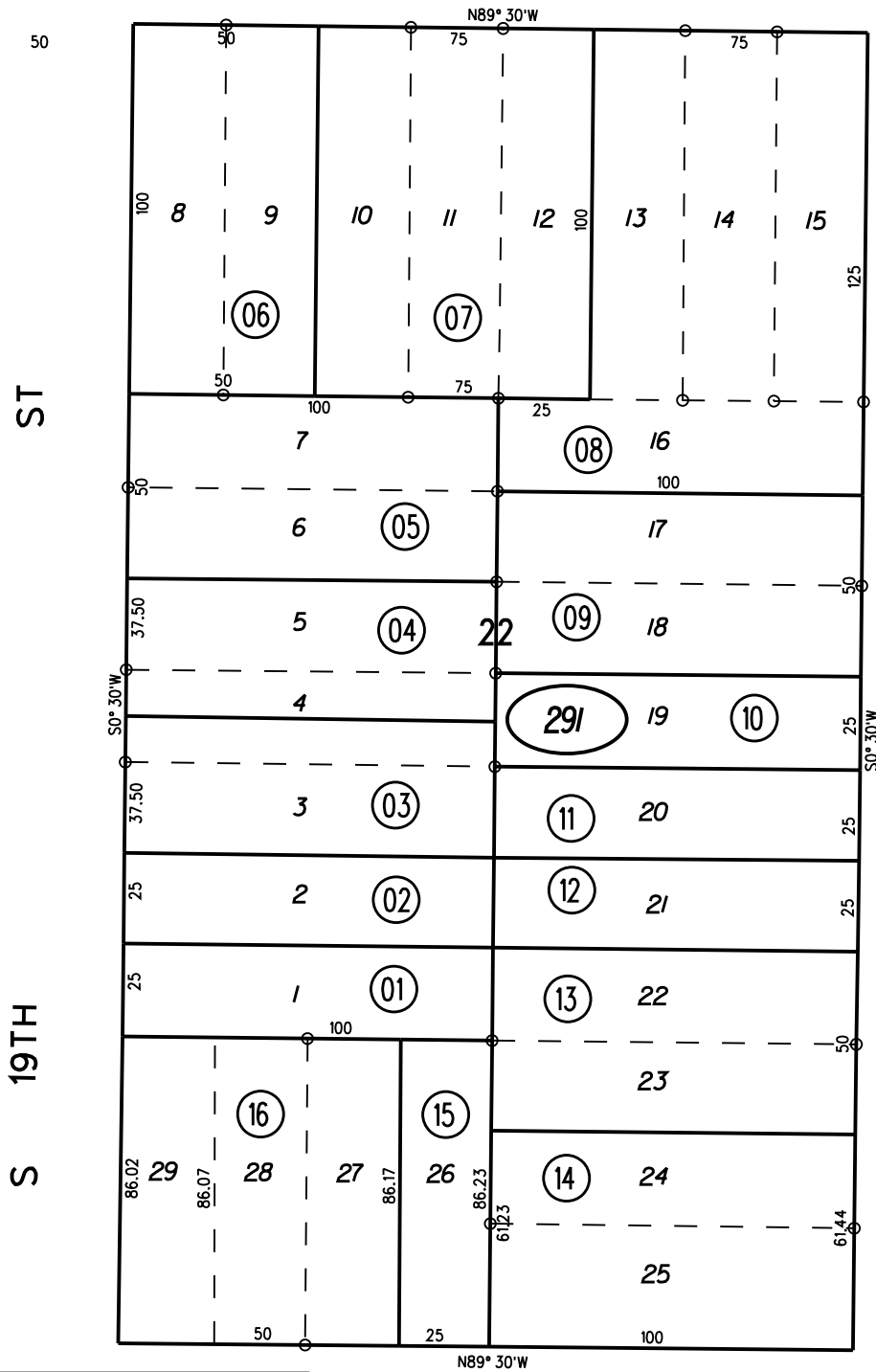
WALL'S HARBOR CENTER TRACT MB 9-207

CUTTING

BLVD

20

28



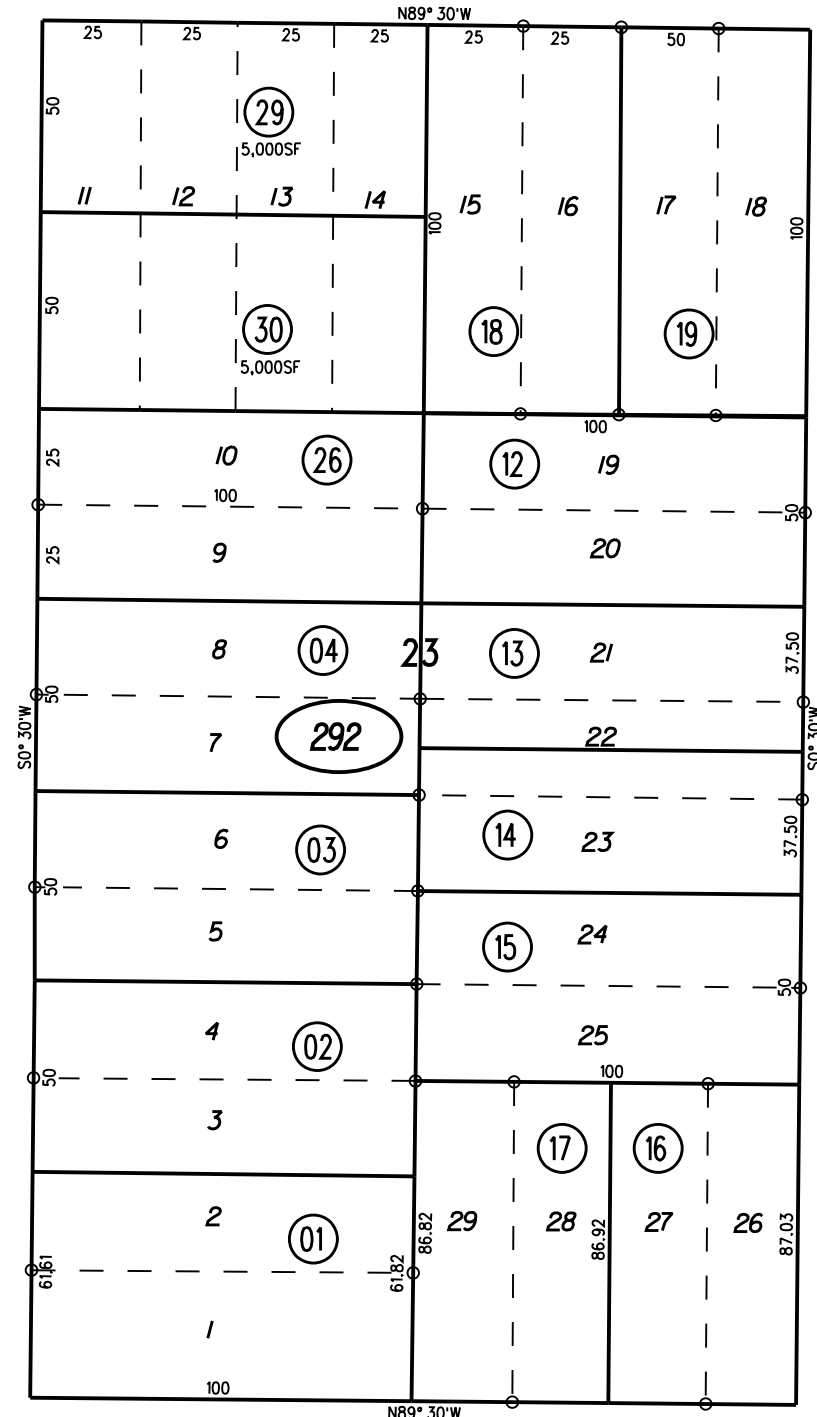
ST

S 20TH

32

POTRERO

NOTE: THIS MAP WAS PREPARED FOR ASSESSMENT PURPOSES ONLY. NO LIABILITY IS ASSUMED FOR THE ACCURACY OF THE INFORMATION DELINEATED HEREON. ASSESSOR'S PARCELS MAY NOT COMPLY WITH LOCAL LOT SPLIT OR BUILDING SITE ORDINANCES.



ST

S 21ST

30

291

292

29,30

6/7/23

1963 ROLL FM.133/61,62 ASSESSOR'S MAP

BOOK 544 PAGE 29

CONTRA COSTA COUNTY, CALIF.

12-5-60 G.C.C.

1"=50'

